

CAL TECH Environmental Laboratories



6814 Rosecrans Avenue. Paramount, CA 90723-3146
 Telephone: (562) 272-2700 Fax: (562) 272-2789

Cal Tech Environmental Laboratories Cost Estimate

Table 1

Cost estimate Number: CTE1070501-01
 Date: May 01, 07
 Prepared By: Mr Roobik Yaghoubi *R-A*
 Submitted To: Mr. Max Raffi
 David H. Fell & Company, Inc.
 6009 Bandini Blvd
 City of Commerce, CA 90040-2904
 Tel. (323) 722-9992
 Fax. (323) 722-6567

Project Description: Facility Closer
 IAT Requirement:
 Start Date: 2007

Analysis	Method	Matrix	Unit Price
Cleaning and Inspection (Walls & Floors)			\$ 23,000.00
Disposal and Removal			\$ 7,000.00
Sampling & Analysis			\$ 13,000.00

The above price includes:
 (Analysis to be determine)

CLOSURE COST ESTIMATE FOR DAVID H. FELL & CO., INC.

Disposal of Waste	Cost/unit	# of Units	Total Cost (\$)
Sweeps, slag, sludge - 181 drums	\$2/drum	181 drums	\$362.00
Liquid hazardous waste - 2 drums	\$175/drum	2 drums	\$350.00
Waste Acid - 2 drums	\$175/drum	2 drums	\$350.00
Cupels/Crucibles - 6 drums	\$100/drum	6 drums	\$600.00
Solid waste generated from decontamination - 2 drums	\$75/drum	2 drums	\$150.00
Disposal and Transportation Cost for Rinsate generated from decontamination of storage and treatment areas, pressure washing two fork lifts, and baghouse areas **Waste will be bulked	\$1.31/gal	550 gallons	\$720.50
Bulking Rinsate Labor Cost	\$88.25/work hr	2 hr	\$176.50
Tank Cost for Bulking the Rinsate	\$330/day	1 day	\$330.00
Labor to move drums to Truck	\$50/hr	4 hr	\$200.00
Transportation/Labor cost to disposal site Number of Trucks Necessary: 3 \$85/hr at 10hrs for 3 trucks **Assume 500 lb/drum for sweeps and 80,000 lb limit per Truck according to DOT regulations	\$85/hr	10 hrs/ round trip per truck	\$2,550.00
Disposal of Equipment			
Disposal and Labor for Wiping the Equipment (screens, rod mills, ball mills, coolants) (scrap metal) **cost includes transportation	\$500/equipment	14 units	\$7,000.00
Disposal and Labor for Wiping the 11 Furnaces (scrap metal) **cost includes transportation	\$500/equipment	11 furnaces	\$5,500.00
Disposal and Labor for Dismantling and Wiping the Piping (scrap metal)	\$91/hr	10 hr	\$910.00
Disposal and Labor for 2 baghouses (scrap metal) **cost includes transportation	\$500	per baghouse	\$1,000.00
Debris Box for piping rental	\$500/ box	1 box	\$500.00
Transportation of Piping to disposal site Number of Trucks Necessary: 1 \$85/hr for 3 hrs per round trip per truck	\$85/hr	3 hrs	\$255.00
Decontamination/ Cleaning (2 man team)			
Storage Areas S1 - S9 (mopping, sweeping)	\$2/ft	1303 sq ft.	\$2,606.00
Treatment Areas including evaporator (mopping, sweeping) and vacuuming of 25 ft high walls	\$5/ft	1236 sq ft.	\$6,180.00
Baghouse 1 and Baghouse 2 Area (mopping, sweeping)			
Cost for steam cleaner rental for pressure washing two fork lifts	\$10/hr	3 hr	\$30.00
Cost for pressure washing two forklifts and Labor for decontaminating the storage areas, treatment areas, and baghouse areas	\$67.03/hr	3 hr	\$201.00

Sampling and Analysis			
Concrete Core Samples			
3 Samples (one sample from evaporator, S6 and S9)	\$87.9/hr	6.5 hr	\$571.00
Concrete Core Samples Analysis w/ Quality Assurance			
6 (Analysis for zinc, copper, lead, nickel, and silver)	\$150/analysis	6 analysis	\$900.00
Soil Samples			
3 samples (one sample from evaporator, S6 and S9) ***6 ft hole per boring	\$76.5/hr	8.5 hr	\$650.25
Soil Samples Analysis w/ Quality Assurance			
12 (Analysis for zinc, copper, lead, nickel, and silver)	\$150/analysis	12 analysis	\$1,800.00
Rinsate Sample			
1 (Analysis for zinc, copper, lead and nickel)	\$156/hr	1 hr	\$156.00
Rinsate Sample Analysis w/ Quality Assurance			
2 (Analysis for zinc, copper, lead and nickel)	\$150/analysis	2 analysis	\$300.00
Wipe Samples			
2 wipe samples, one for each fork lift	\$148.84/hr	1.5 hr	\$223.26
Wipe Sample Analysis w/ Quality Assurance			
4 (Analysis for zinc, copper, lead, nickel and silver)	\$150/analysis	4 analysis	\$600.00

Subtotal	\$35,171 51
10% PE Cost	\$3,517 15
20% Contingency	\$7,737 73
Total Estimate	\$46,426.39

PERSONNEL TRAINING

Personnel training requirements cited in Title 22, Section 66265.16 CCR. The purpose of these requirements is to ensure that all facility personnel have adequate training to perform their duties safely and in compliance with regulatory standards.

Following is the training manual for :

David H. Fell & Co., Inc.
6009 Bandini Blvd.
Commerce, CA
90040

Ph: 323-722-9992

VI. TRAINING

The following trainings are provided for the employees of David H. Fell & Co., Inc. by CDMS:

- | | |
|-------------------------------------|-------------------------------------|
| ❖ Right to Know, Emergency Response | ERGONOMICS |
| ❖ Hazardous Waste | EYE SAFETY |
| ❖ Eye Safety | PERSONAL PROTECTION EQUIPMENT (PPE) |
| ❖ Lifting/Back Safety | RESPIRATOR |
| ❖ Forklift Operator | 126 F (TRANSPORTATION) |
| ❖ Hearing Safety | |

This section contains David H. Fell & Co., Inc.'s written training program.

The following items are maintained in the Training Binder of David H. Fell & Co., Inc.'s Compliance Library:

- ❖ One copy of the most recent training
- ❖ Employee Sign-offs

TRAINING PROGRAM

David H. Fell & Co., Inc. has a comprehensive training program. The purpose of this program is to advise employees of the Hazard Communication Standard, their rights to chemical hazard information, specific training with respect to hazards in the workplace, regulatory compliance issues, appropriate job training and to satisfy regulatory requirements. Training is provided to each new employee prior to exposure to hazards. If new hazards are introduced to the workplace or if an employee is moved to a new work area, then additional, appropriate training is provided.

This program is reviewed on a regular basis by the management of David H. Fell & Co., Inc. to make sure that all hazards are identified and that appropriate training is conducted. The plan is designed to provide at least annual training for each identified hazard.

1. All employees shall be trained in the following:
 - ❖ Location and content of the Hazardous Material Management Plan
 - ❖ OSHA Hazard Communication
 - ❖ Hazardous material emergency response plan and procedures
 - ❖ Procedures for internal alarm/notification
 - ❖ Procedures for notification of external emergency response organizations

2. New employees shall be trained in safety and emergency response by their supervisor prior to working with hazardous substances. They will be expected to participate in the next annual training session.

3. Chemical Handlers are trained in the following:
 - ❖ Safe methods for handling and storage of hazardous materials
 - ❖ Proper use of personal protective equipment
 - ❖ Locations and proper use of fire and spill control equipment
 - ❖ Specific hazards of each chemical to which they may be exposed

PERSONNEL TRAINING

All personnel are to be trained according to the provisions of Hazardous Substances Information & Training Act, also known as the "Right To Know" law. This provides a basic understanding of the chemical and other hazards present in the facility and how to work safely around them. The training manual is located in the vice president's office.

In addition, CCR Title 26 Division 22 requires that personnel are given the following training;

A. CONTENTS OF TRAINING MANUAL

- 1) Understanding the contents of the contingency plan:
- 2) Procedures for using, inspecting, repairing and replacing facility emergency and monitoring equipment.
- 3) Cut off for automatic feed systems.
- 4) Communications and/or alarm systems
- 5) Response to fires or explosions
- 6) Response to ground water contamination
- 7) Shut down of operations

B. IMPLEMENTATION OF TRAINING REQUIREMENTS

- 1) Employees will be trained in all aspects of the aforementioned articles within 6 months of hiring. In addition they will not work in an unsupervised position until such training has been completed.
- 2) All personnel will be given an annual review of this material

C. RECORDS

- 1) Job titles of positions at this facility related to hazardous materials management.
- 2) Job descriptions
- 3) Type and amount of training
- 4) Documentation of training
- 5) Retention of records

A. CONTENTS OF TRAINING MANUAL

- 1) Understanding the contents of the contingency plan:
 - a) Contingency Plan will be used as a manual for this portion of the training
- 2) Procedures for using, inspecting, repairing and replacing facility emergency and monitoring equipment.
 - a) Fire extinguishers
 - i) use: use information sheet provided by the Fire Department for training purposes
 - ii) inspection: check gage to see that needle is in the green space. also check tag to see that the date is current
 - iii) repair: fire extinguishers must be sent out to qualified technicians for repair.
 - b) 5 minute air pack
 - i) use: directions for use are contained in box containing the unit. Use instructions for training purposes.
 - ii) inspection: the pack is to be inspected monthly for air bottle content by checking gage, flow by opening valve briefly, and for wear or degradation of the mask by visual inspection.
 - iii) repair: air packs must be sent out to qualified technicians for repair.
 - c) Eye wash station
 - i) use: push handle to begin water flow. Hold eyes open and flush for at least 15 minutes.
 - ii) inspection: push handle to check water flow.
 - iii) repair: eye wash stations will be conducted by maintenance department. Replacement parts can be obtained from safety supply stores.

d) Fire blanket

i) use: Wrap around burning object or person to smother flames

ii) inspection: check container for ease of opening. Check blanket for wear or degradation by visual inspection

iii) repair: replace when necessary

3) Cut off for automatic feed systems.

There are no automatic feed systems on site.

4) Communications and/or alarm systems

A) Pager: Each company phone contains a page button. Push the button and speak into the mouthpiece.

B) Sprinkler: The sprinkler system is connected to the alarm company - Wells Fargo. If the sprinklers are tripped, the alarm company will contact the Fire Department.

5) Response to fires or explosions

A) Secure the safety of yourself and those around you

B) Call for help-locally by P.A. system and /or fire department-911

C) If practical attempt to arrest the fire with the use of a fire extinguisher or fire hose or fire blanket.

D) Cut off gas main if necessary

E) If practical remove flammable or compressed gasses

6) Response to ground water contamination

This is to be done by the emergency coordinator as follows:

If his/her assessment indicates that evacuation of local areas may be advisable, he/she shall immediately notify appropriate local authorities. He/she shall be available to help appropriate officials decide whether local areas should be evacuated;

4. Emergency Response team members are trained in the following:
 - ❖ Procedures for shutdown of operations
 - ❖ Procedures for using, maintaining and replacing facility emergency and monitoring equipment
 - ❖ All personnel are trained in emergency response procedures within six months of hiring

5. The following records are maintained for all employees:
 - ❖ Verification that training was completed by the employee. All training will be documented by each employee signing a Training Sign-Off sheet. The Training Sign-Off Sheets shall be filed in each employee's personnel file.
 - ❖ Description of the type and amount of introductory and continuing training
 - ❖ Training records of former employees are retained for at least three years
 - ❖ Documentation on and description of emergency response drills conducted at the facility.

6. Refresher training will be conducted on an annual basis. If an employee misses a session he/she is not allowed to work in an unsupervised position until the training has been received.

He/she shall, in every situation, immediately notify the State Office of Emergency Services. The report shall include:

- A) Name and telephone number of reporter.
- B) Name and address of facility.
- C) Time and type of incident (release to ground water).
- D) Name and quantity of material(s) involved, to the extent known.
- E) The extent of injuries, if any.
- F) The possible hazards to human health or the environment.

7) Shut down of operations

A) Main gas valve; Located along the wall just to the east of the main entrance. Turn off valve close to the ground using the wrench provided.

B) Roasting oven; Located along west wall of sampling room near the single pedestrian door. There are individual shut off valves for each burner (1 primary, 2 secondary). There is also a main valve for the entire unit. These valves can be closed by hand.

C) Baghouse; Located outside along the north wall of the building. Controls are located on the east wall of the sampling room, north of the roll up door. There are two control panels (1 for each baghouse) with on/off buttons.

D) Compressor; Located outside along the north wall of the building. The control panel consists of a timer, which when turned to zero turns off the unit.

E) Induction furnaces; Located along the west wall of the sampling room, north of the roaster furnace. Power switches are located on the left side of each unit. The controls for the water pumps and water cooler are along the wall between the two furnaces.

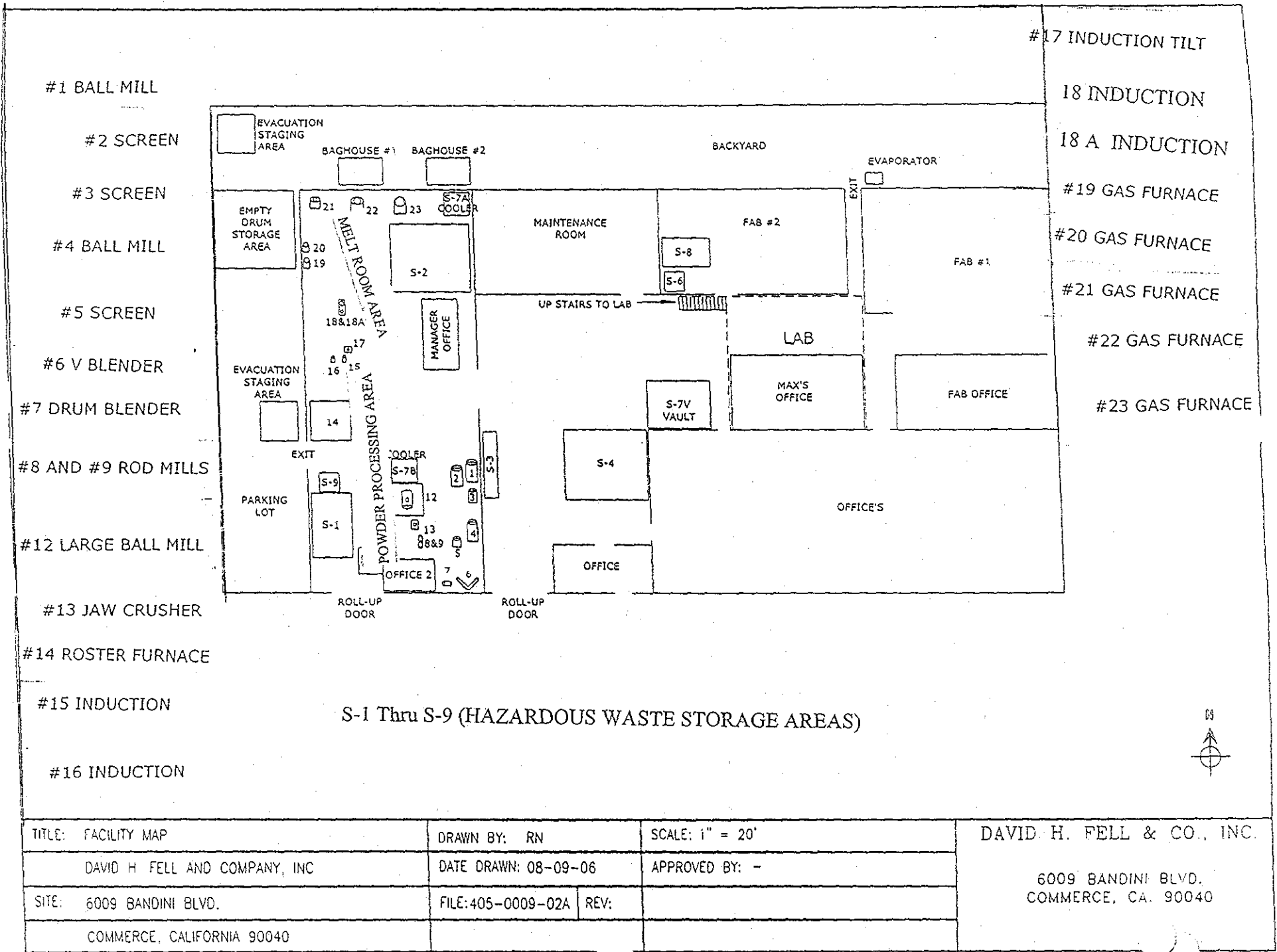
F) Gas furnaces; Located along the west and north walls of the sampling room. Each unit has a gas valve which can be closed by hand.

8) ALTERNATIVE COORDINATOR: LARRY FELL:
Ph: 323-722-9992

CONTACT NUMBER FOR THE HOSPITAL
CLOSEST TO THE FACILITY:

U.S. Health Works
430 S Garfield
Commerce, CA
Ph: 323-722-8481

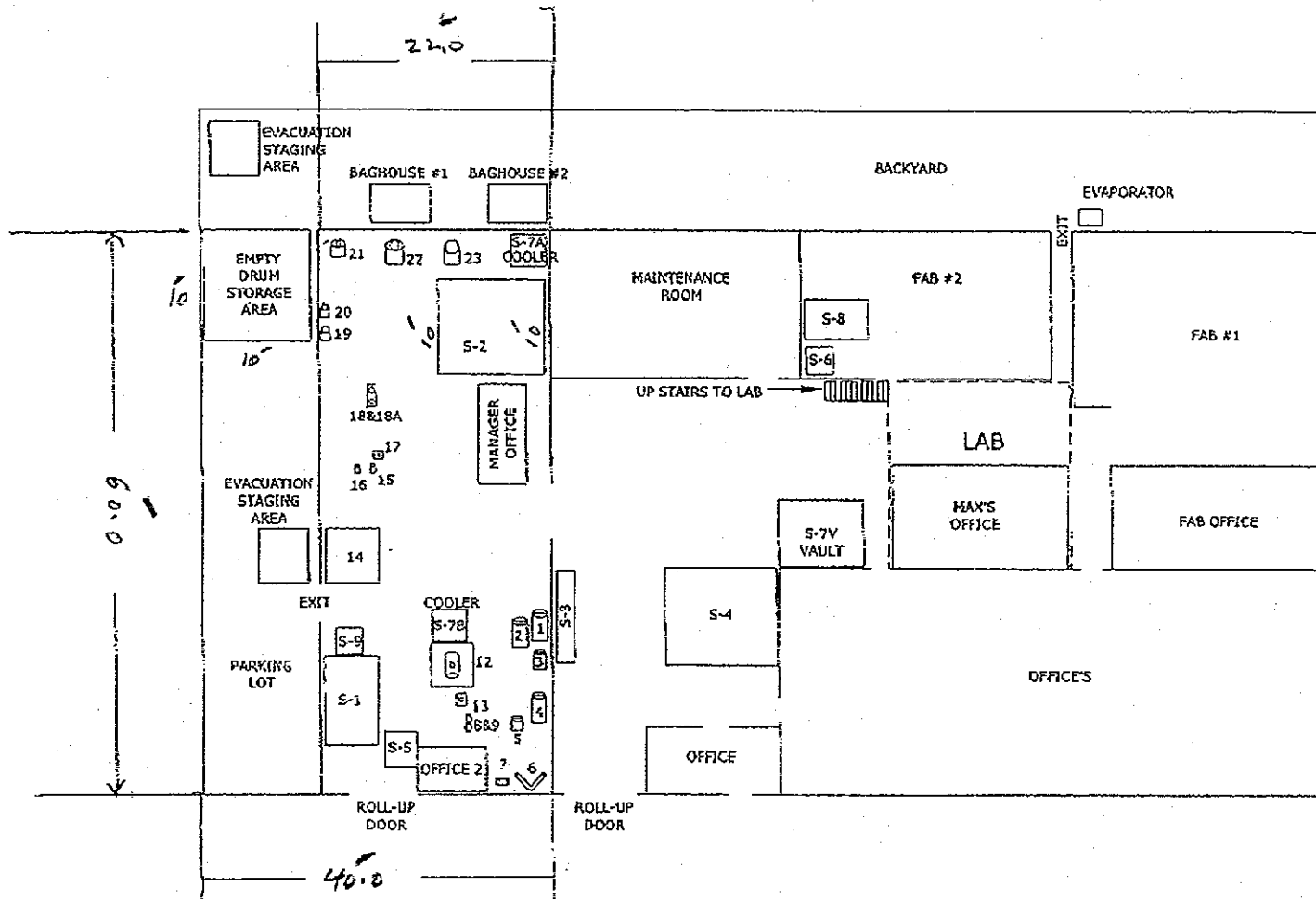
Police Department: 911



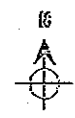
S-1 Thru S-9 (HAZARDOUS WASTE STORAGE AREAS)



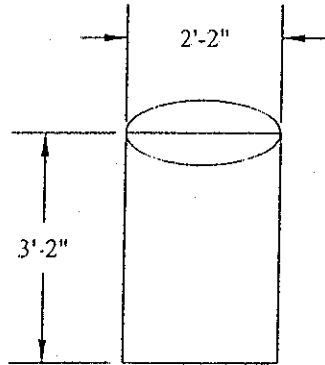
TITLE: FACILITY MAP	DRAWN BY: RN	SCALE: 1" = 20'	DAVID H. FELL & CO., INC. 6009 BANDINI BLVD. COMMERCE, CA. 90040
DAVID H FELL AND COMPANY, INC	DATE DRAWN: 08-09-06	APPROVED BY: -	
SITE: 6009 BANDINI BLVD.	FILE: 405-0009-02A	REV:	
COMMERCE, CALIFORNIA 90040			



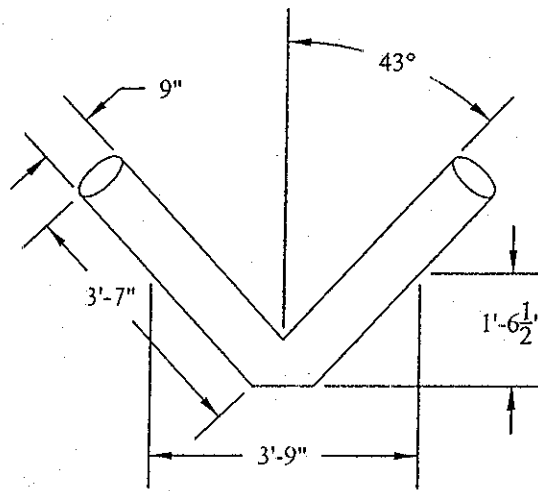
height of buildg = ~ 25.0 from floor to the roof



TITLE: FACILITY MAP	DRAWN BY: RN	SCALE: 1" = 20'	DAVID H. FELL & CO., INC. 6009 BANDINI BLVD. COMMERCE, CA. 90040
DAVID H. FELL AND COMPANY, INC	DATE DRAWN: 08-09-06	APPROVED BY: -	
SITE: 6009 BANDINI BLVD.	FILE: 405-0009-02A	REV:	
COMMERCE, CALIFORNIA 90040			



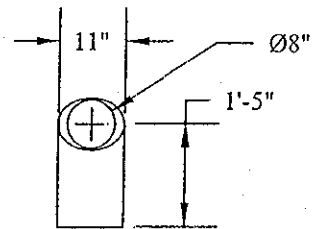
#3 SCREEN



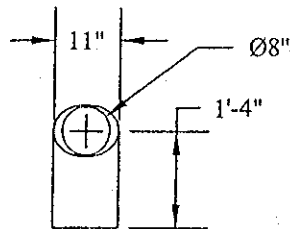
#6 V BLENDER

POWDER PROCESSING
CONTINUES

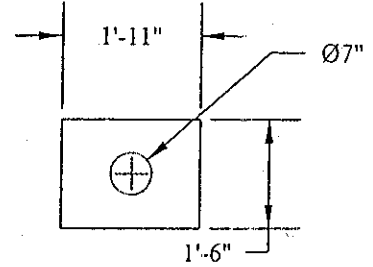
TITLE: STANDARDIZED PERMIT	APPROVED BY:	SCALE: 1" = 30"
	DRAWN BY: RN	DAVID H. FELL & CO, INC. 6009 BANDINI BLVD. COMMERCE, CA. 90040 (323) 722-9992
SITE: DAVID H FELL & COMPANY, INC	DATE DRAWN: 08-07-06	
6009 BANDINI BLVD	FILE: 706-0086-01A REV:	
COMMERCE, CALIFORNIA 90040		



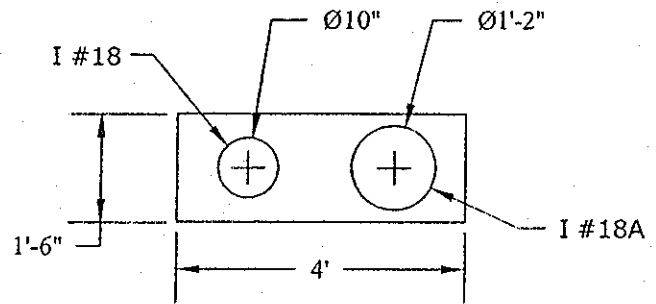
#15 INDUCTION



#16 INDUCTION



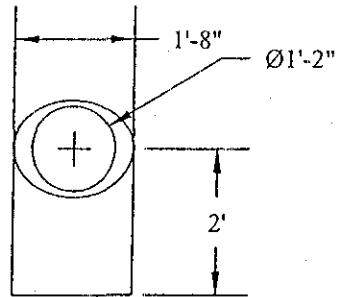
#17 INDUCTION TILT



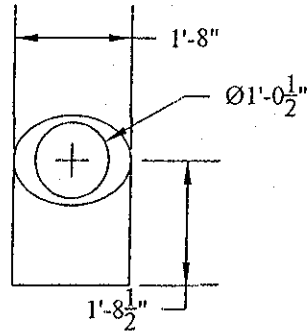
INDUCTION PUSH
OUT FURNACES

INDUCTION FURNACES

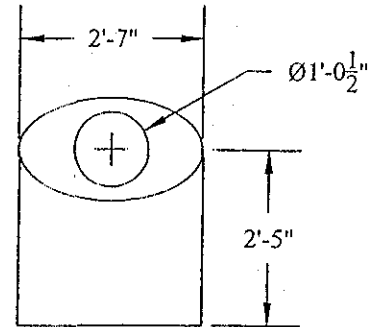
TITLE: STANDARDIZED PERMIT	APPROVED BY:	SCALE: 1" = 30"
	DRAWN BY: RN	DAVID H. FELL & CO, INC.
SITE: DAVID H. FELL & COMPANY, INC.	DATE DRAWN: 08-07-06	6009 BANDINI BLVD. COMMERCE, CA 90040 (323) 722-9992
6009 BANDINI BLVD.	FILE: 706-0086-01A REV:	
COMMERCE, CALIFORNIA 90040		



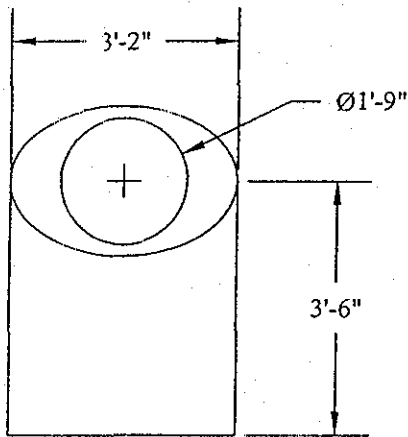
#19 GAS FURNACE



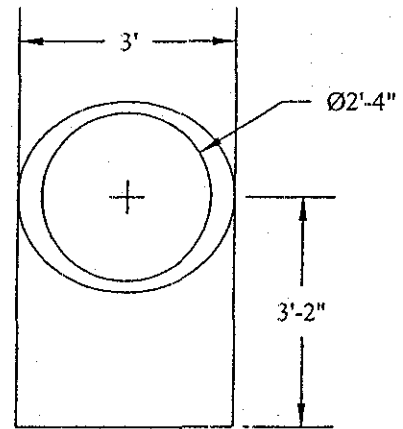
#20 GAS FURNACE



#21 GAS FURNACE



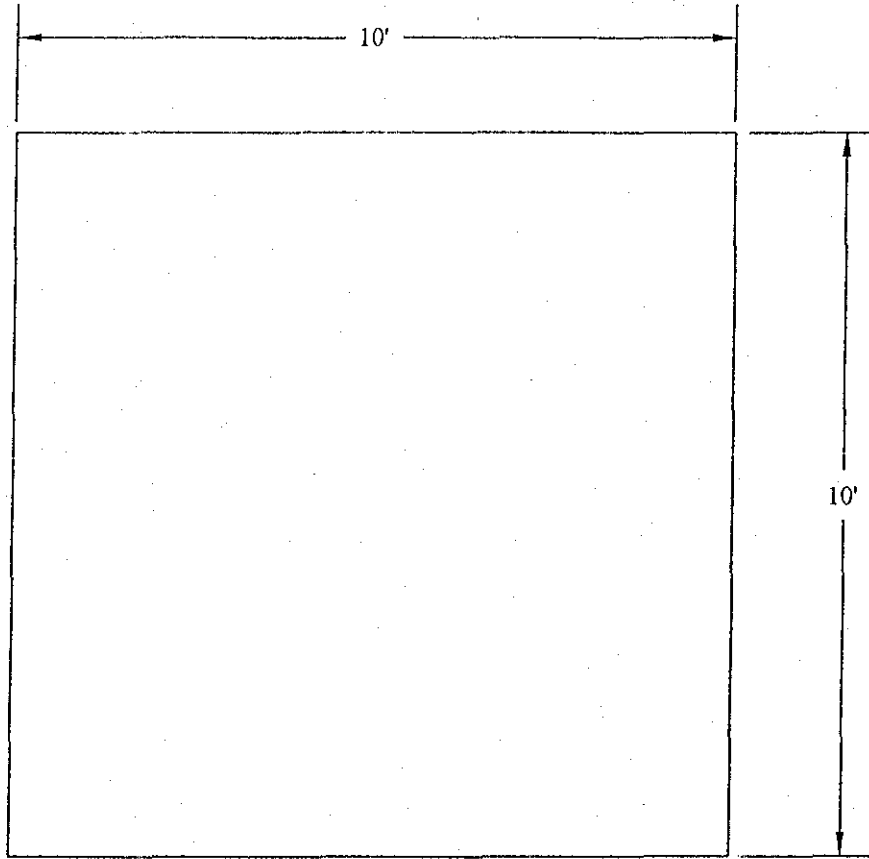
#22 GAS FURNACE



#23 GAS FURNACE

NATURAL GAS FURNACES

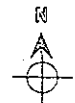
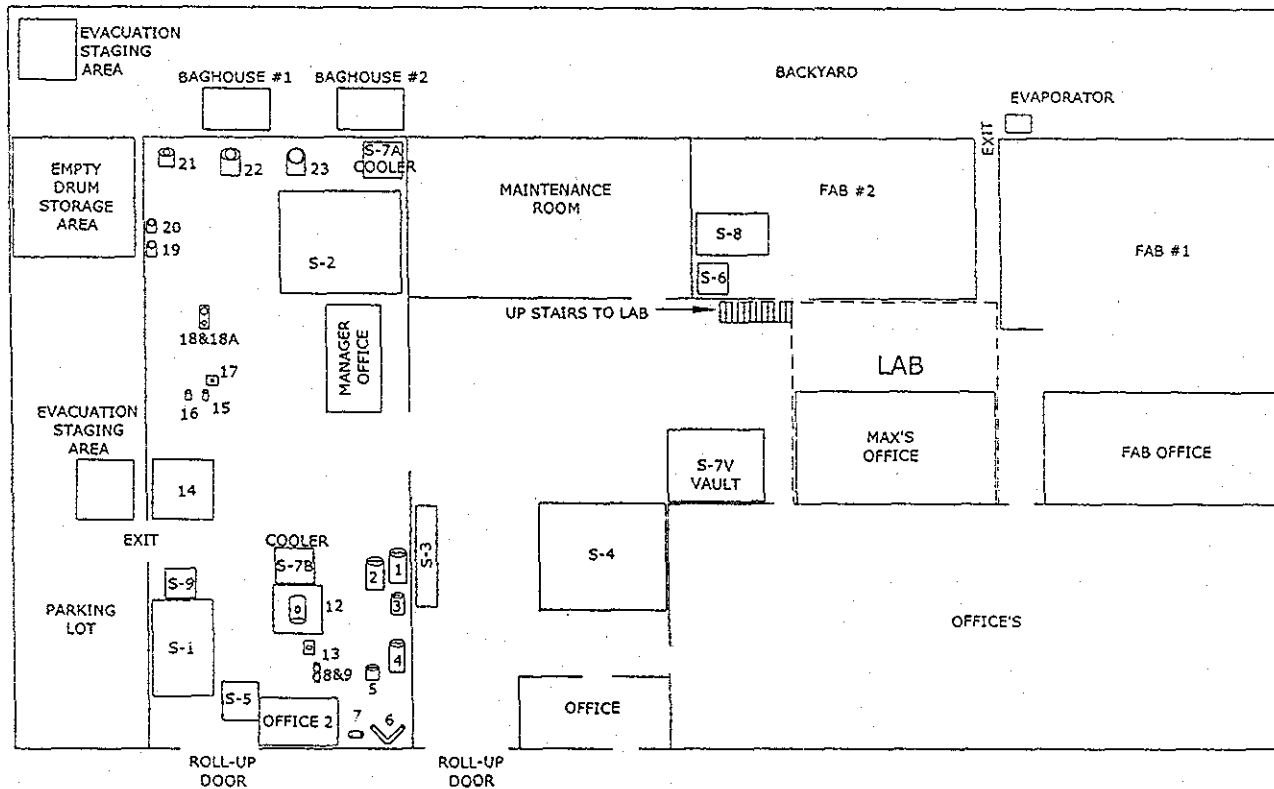
TITLE: STANDARDIZED PERMIT	APPROVED BY:	SCALE: 1" = 30"
	DRAWN BY: RN	DAVID H. FELL & CO, INC 6009 BANDINI BLVD. COMMERCE, CA. 90040 (323) 722-9992
SITE: DAVID H. FELL & COMPANY, INC.	DATE DRAWN: 08-07-06	
6009 BANDINI BLVD	FILE: 706-0086-01A REV:	
COMMERCE, CALIFORNIA 90040		



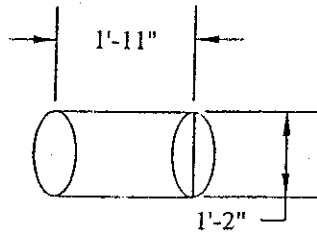
#14 ROSTER FURNACE

NATURAL GAS FURNACES

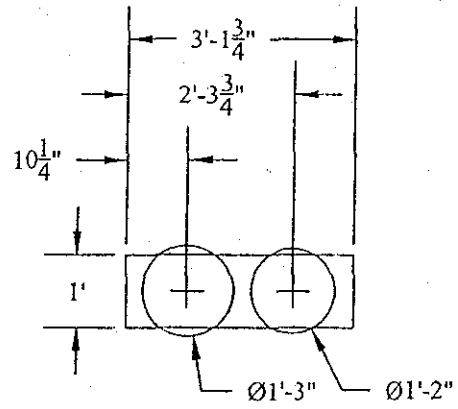
TITLE: STANDARDIZED PERMIT	APPROVED BY:	SCALE: 1" = 30"
	DRAWN BY: RN	DAVID H FELL & CO, INC. 6009 BANDINI BLVD. COMMERCE, CA. 90040 (323) 722-9992
SITE: DAVID H FELL & COMPANY, INC.	DATE DRAWN: 08-07-06	
6009 BANDINI BLVD	FILE: 706-0086-01A REV:	
COMMERCE, CALIFORNIA 90040		



TITLE: FACILITY MAP	DRAWN BY: RN	SCALE: 1" = 20'	DAVID H. FELL & CO., INC. 6009 BANDINI BLVD. COMMERCE, CA. 90040
DAVID H. FELL AND COMPANY, INC	DATE DRAWN: 08-09-06	APPROVED BY: -	
SITE: 6009 BANDINI BLVD.	FILE: 405-0009-02A	REV:	
COMMERCE, CALIFORNIA 90040			



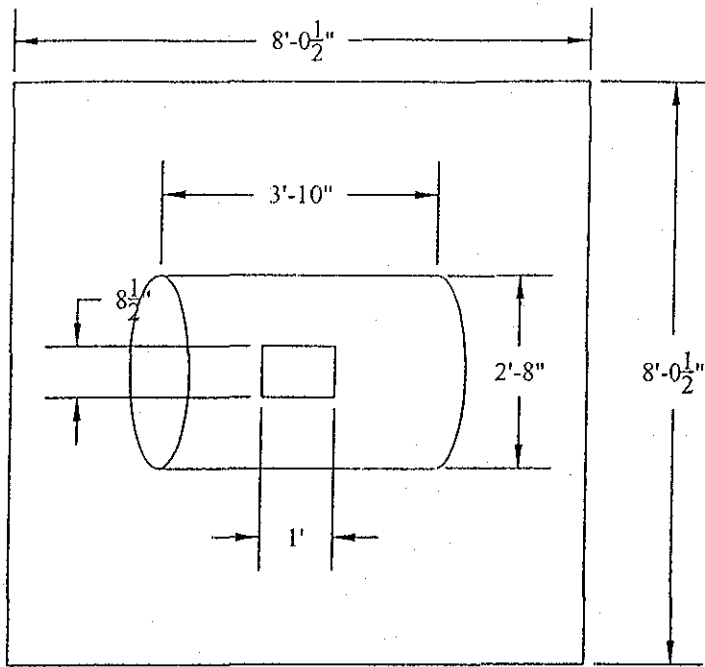
#7 DRUM BLENDER



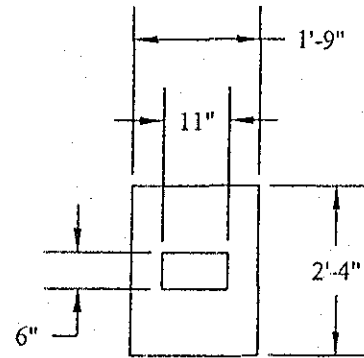
#8 AND #9 ROD MILLS

POWDER PROCESSING
CONTINUES

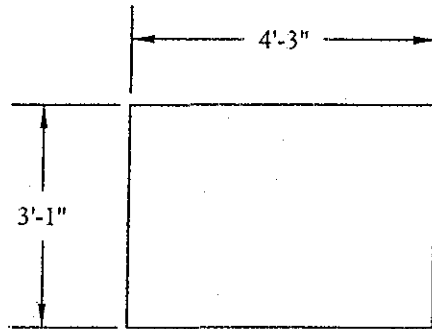
TITLE: STANDARDIZED PERMIT	APPROVED BY:	SCALE: 1" = 30"
	DRAWN BY: RN	DAVID H. FELL & CO, INC. 6009 BANDINI BLVD. COMMERCE, CA. 90040 (323) 722-9992
SITE: DAVID H FELL & COMPANY, INC	DATE DRAWN: 08-07-06	
6009 BANDINI BLVD.	FILE: 706-0086-01A REV:	
COMMERCE, CALIFORNIA 90040		



#12 LARGE BALL MILL



#13 JAW CRUSHER

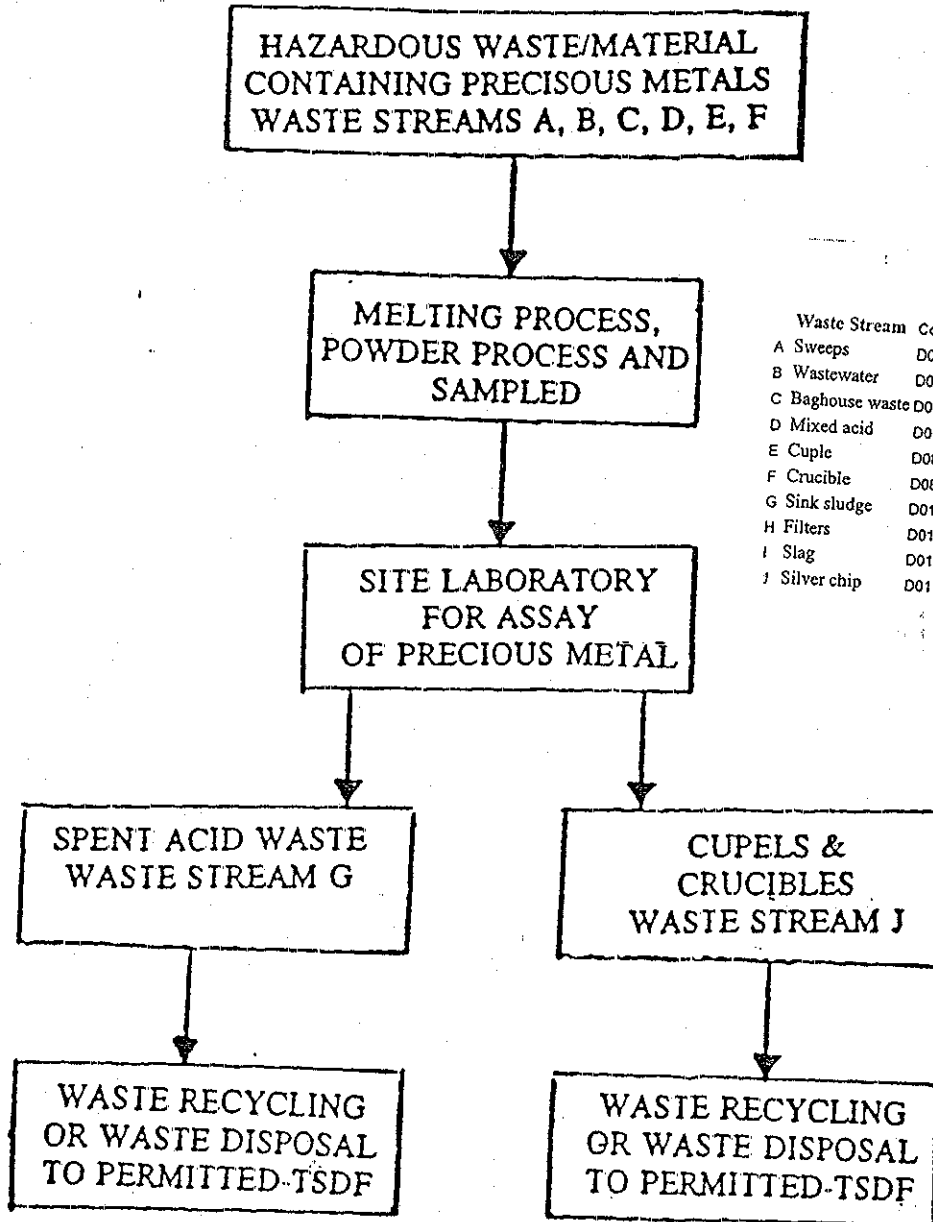


EVAPORATOR

POWDER PROCESSING
CONTINUES

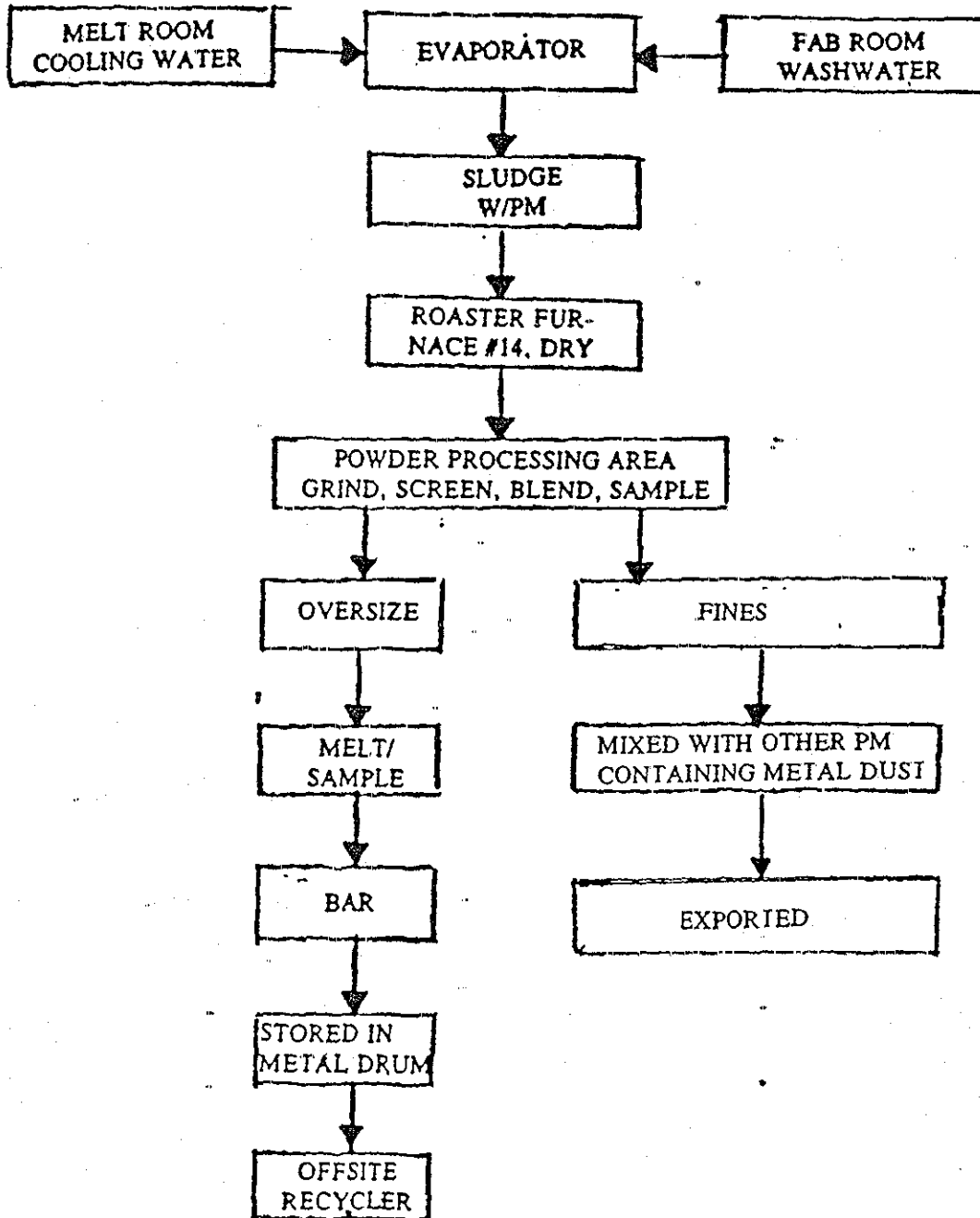
TITLE: STANDARDIZED PERMIT	APPROVED BY:	SCALE: 1" = 30"
	DRAWN BY: RN	DAVID H. FELL & CO, INC. 6009 BANDINI BLVD. COMMERCE, CA. 90040 (323) 722-9992
SITE: DAVID H. FELL & COMPANY, INC	DATE DRAWN: 08-07-06	
6009 BANDINI BLVD	FILE: 706-0086-01A REV:	
COMMERCE, CALIFORNIA 90040		

PROCESS FLOW DIAGRAM
 for LABORATORY
 DAVID H. FELL & COMPANY, INC.
 6009 BANDINI BLVD.
 COMMERCE, CA 90040

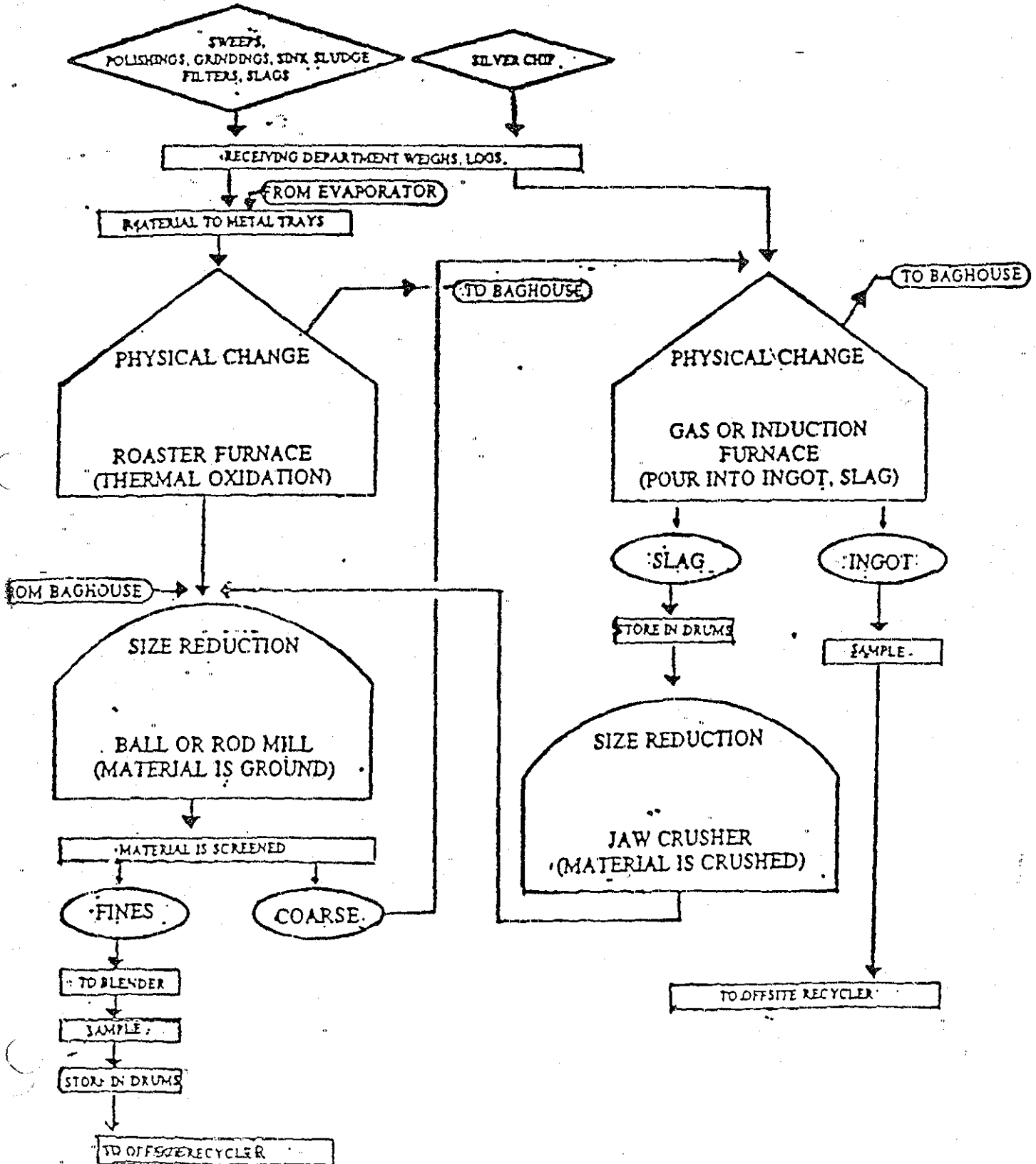


Waste Stream Code	Code	Hazard	Constituents	Process
A Sweeps	D011	172 toxic	silver	powder/melt
B Wastewater	D011	491 toxic	silver	evaporator
C Baghouse waste	D011	591 toxic	silver/copper	
D Mixed acid	D011 D002	792 corrosive	silver	lab
E Cuple	D08	181 toxic	lead	lab
F Crucible	D08	181 toxic	lead	lab
G Sink sludge	D011	172 toxic	silver	powder/melt
H Filters	D011	172 toxic	silver	powder/melt
I Slag	D011	172 toxic	PM	powder/melt
J Silver chip	D011	172 toxic	silver	Melt

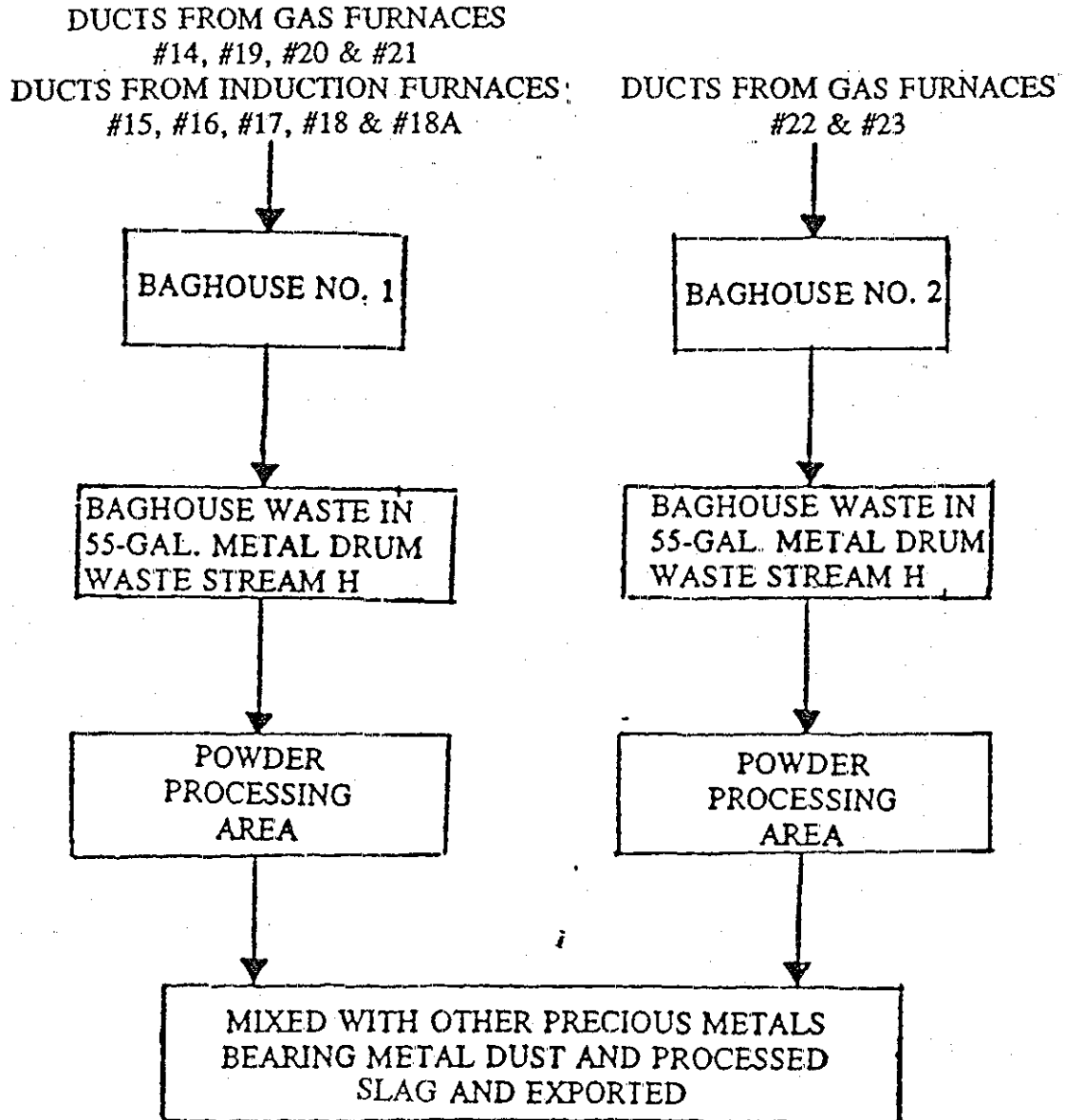
PROCESS FLOW DIAGRAM
for EVAPORATOR
DAVID H. FELL & COMPANY, INC.
6009 BANDINI BLVD.
COMMERCE, CA 90040



OVERALL PROCESS FLOW DIAGRAM
DAVID H. FELL & COMPANY, INC.
6009 BANDINI BLVD.
COMMERCE, CA 90040



PROCESS FLOW DIAGRAM for BAGHOUSES
DAVID H. FELL & COMPANY, INC.
6009 BANDINI BLVD.
COMMERCE, CA 90040



Date, Time	Initials	Chemical/Waste Storage Areas
		Maximum 2 rows of drums together
		3 foot clearance between sets of rows
		Tank/container labels can be seen from aisles
		Storage capacity: 100 000 pounds is not exceeded
		Warning signs posted.
		Facility Equipment
		Forklifts <u>1</u>
		Processing Areas
		Loading and unloading zones
		Processing equipment
		Warning Signs
		Evacuation Routes
		Doorways
		Aisles
		Ball mills
		Evaporator
		Furnaces
		Fire Extinguishers
		Other Equipment
		eyewash stations <u>2</u> showers

Additional Comments/Corrective Action:

Date, Time	Initials
	Facility Equipment
	Fumaces
	Secondary Containment
	Is the area free of spills and leaks?
	Is secondary containment free of cracks/deterioration?
	Is secondary containment free of accumulated liquids?
	Containers and Drums
	Is aisle space around containers adequate for inspection?
	Is all waste disposed of within 90 days of accumulation start?
	Are all containers/drums sealed with tight-fitting lids/bungs?
	Are container/drum tops free of spillage?
	Is the area properly labeled with warning signs?
	Are the containers/drums properly labeled?
	Are incompatible materials/wastes segregated?
	Are containers/drums within secondary containment?
	respirators cartridges
	protective clothing
	forklifts
	warning signs
	accumulation dates
	aisle space

Additional Comments/Corrective Action:

Date	Time	Initials	
			Emergency Equipment (Cont)
			Fire Blankets
			Fire Extinguishers
			Fire Alarm System
			Emergency Lights
			Portable Pumps/Hoses
			Fire Fighting Hoses
			Spill Control Equipment
			Security Equipment
			Fences / Facility Area
			Signs
			Gates
			Locks
			Burglar Alarm
			Communication Equipment
			Telephones
			Radios
			Intercoms
			Public Address System
			Structures
			Tank Supports
			Stormwater
			Dry Season (twice, May - September)
			Wet Season (one storm event/month October - April)
			Comments

Additional Comments/Corrective Action:

Vertical lines for handwritten notes.

Small vertical text on the left margin.

STANDARDIZED PERMIT NOTIFICATION FOR EXISTING OR PROPOSED HAZARDOUS WASTE FACILITIES

IX. REQUIRED ATTACHMENTS

- A. A scaled map to show the facility location including major freeways and cross streets.
- B. A scaled diagram to show the facility site/plot map indicating the buildings, parking lots, and landscape areas.
- C. A scaled diagram to show the locations of hazardous waste management units to be permitted under the standardized permit.
- D. A unit description information sheet for each of the hazardous waste storage and/or treatment units that will be under the Standardized Permit

X. OWNER CERTIFICATION

"I certify that the unit or units described in these documents will meet the eligibility and operating requirements of state statutes and regulations for the standardized permit tier. I understand that I am required to provide financial assurance for this facility, and I am required to conduct a corrective action program as part of the standardized permit application to be submitted to the Department of Toxic Substances Control."

"I certify under penalty of law that this document and all attachments were prepared under my direction or supervision in accordance with a system designed to assure that qualified personnel properly gather and evaluate the information submitted. Based on my inquiry of the person or persons who will manage the system or those directly responsible for gathering the information, the information is, to the best of my knowledge and belief, true, accurate and complete. I am aware that there are significant penalties for submitting false information, including the possibility of fines and imprisonment for known violations."

Larry Fell

Name (Print or Type)

President

Title

Signature

Date Signed 6/1/07

XI. OPERATOR CERTIFICATION

"I certify that the unit or units described in these documents will meet the eligibility and operating requirements of state statutes and regulations for the standardized permit tier. I understand that I am required to provide financial assurance for this facility, and I am required to conduct a corrective action program as part of the standardized permit application to be submitted to the Department of Toxic Substances Control."

"I certify under penalty of law that this document and all attachments were prepared under my direction or supervision in accordance with a system designed to assure that qualified personnel properly gather and evaluate the information submitted. Based on my inquiry of the person or persons who will manage the system or those directly responsible for gathering the information, the information is, to the best of my knowledge and belief, true, accurate and complete. I am aware that there are significant penalties for submitting false information, including the possibility of fines and imprisonment for known violations."

Larry Fell

Name (Print or Type)

President

Title

Signature

Date Signed 6/1/07

XII. LAND OWNER CERTIFICATION

I [We] certify under penalty of law that I [we] am [are] familiar with the operations conducted by

X DAVID H. FELL, Co. INC [Names of Operators] of DAVID H. FELL, Co INC [Name of Facility] at 6009 BANDINI BLVD COMMUNCE CA 90040 [address] on the property owned by SONDR HAUGE TRUSTEE, [owner's name or his/her designee], that I [we] have reviewed this permit application, and to the best on my [our] knowledge, information, and belief, find it to be true and accurate. I [We] understand this application is being submitted for the purpose of obtaining a Standardized Permit to operate a hazardous waste storage and treatment facility.

I [We] understand fully that I [we], as the land owner, located thereon, am [are] jointly and severally responsible for compliance with applicable provisions of the California Health and Safety Code, its implementing regulations and any permit issued pursuant to the applications of these regulations.

X SONDR HAUGE TRUSTEE
Name (print or type) Title

X DAVID HERMAN FELL TRUSTEE
Name (print or type) Title

X Sondra Hauge 9/28/06
Signature Date

X [Signature] 9/28/06
Signature Date

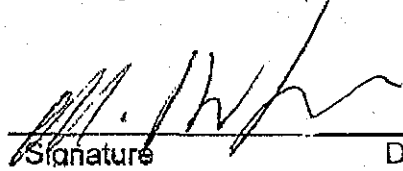
DEPARTMENT OF TOXIC SUBSTANCES CONTROL
STANDARDIZED PERMIT OPERATION PLAN INSTRUCTIONS

PAGE 67

PREPAREDNESS AND PREVENTION

I hereby certify the following:

1. I have read and understood Sections 66264.30 through 66264.35, 66264.37, and 66270.14(b)(8) and (b)(9), Title 22 of the California Code of Regulations (Preparedness and Prevention).
2. The procedures and equipment for my facility will be in compliance with these regulations. My facility will be designed, constructed, maintained and operated to minimize the possibility of a fire, explosion, or any unplanned sudden or non-sudden release of hazardous waste or hazardous waste constituents to air, soil, or surface water which could threaten human health or the environment.
3. I understand that this certification is an integral part of the formal application for a Standardized Permit for my facility and that any falsification is equivalent to a false statement under Health and Safety Code Section 25191 and may be grounds for a permit denial.



MAX RAFIP _____
 Print Name and Title Signature Date
 Env. Mgr

DAVID H. FELL & CO. INC
 Facility Name and Address
 6009 BANDINI BLVD
 San Jose, CA 95120

MANIFEST SYSTEM, RECORD KEEPING AND REPORTING

I hereby certify the following:

1. I have read and understood sections 66264.70 through 66264.78, Title 22, of the California Code of Regulations on Manifest System, Record Keeping and Reporting requirements. I will have or prepare, for my facility, the required records and reports to be in compliance with all applicable regulations.
2. I certify that a copy of the required records or reports will be maintained at my facility and will be available to local, state or federal agencies upon request. I understand that this certification is an integral part of the formal application for a standardized permit for my facility. And that any falsification is equivalent to a false statement under Health and Safety Code section 25191 and may be grounds for a permit denial.
3. My facility is (or is not) an offsite facility. I have sent a notice to generators that may use my facility's services and I have the appropriate permit(s) (section 66264.12(b)). A copy of my notice is kept in my facility.

MARK RAFFI
 Print Name and Title
 Environmental MGR

[Signature] 1-2-08
 Signature Date

6009 BARDINI, Commerce Co. CA 92867
 Facility Name and Address

SECURITY

I hereby certify the following:

1. I have read and understood Sections 66264.14, and 66270 14(b)(4), Title 22 of the California Code of Regulations (Security).
2. The security procedures and equipment for my facility will be in compliance with these regulations.
3. I understand that this certification is an integral part of the formal application for a Standardized Permit for my facility and that any falsification is equivalent to a false statement under Health and Safety Code Section 25191 and may be grounds for a permit denial.

MAX RAFFI
Printed Name

M. Raffi 1-2-08
Signature Date

6009 BARDINI, Commerce Ct 92867
Facility Address

FACILITY LOCATION, SEISMIC AND PRECIPITATION INFORMATION

I hereby certify the following:

1. I have read and understood Sections 66264.25 and 66270.14(b)(11), Title 22, of the California Code of Regulations on Facility location, Seismic and Precipitation Information.
2. I certify that the nearest fault to my facility is Dunwoody PLAIN Fault and is _____ feet (miles) away my facility.
3. I certify that my facility is not in the 100-year flood plain; otherwise I will provide the information required under section 66270.14 (b)(11)(D).
4. I understand that this certification is an integral part of the formal application for a Standardized Permit for my facility and that any falsification is equivalent to a false statement under Health and Safety Code Section 25191 and may be grounds for a permit denial.

MAX RAFFI
Print Name and Title
Environmental Mgr

[Signature] 1-2-08
Signature Date

6009 BANDING COMPANY CT 92887
Facility Address