

Appendix III

Sampling Preparation Photographs

Figure 1 Obtaining a 0.25" Section from a Lumber

Marking two-foot section on treated lumber sample

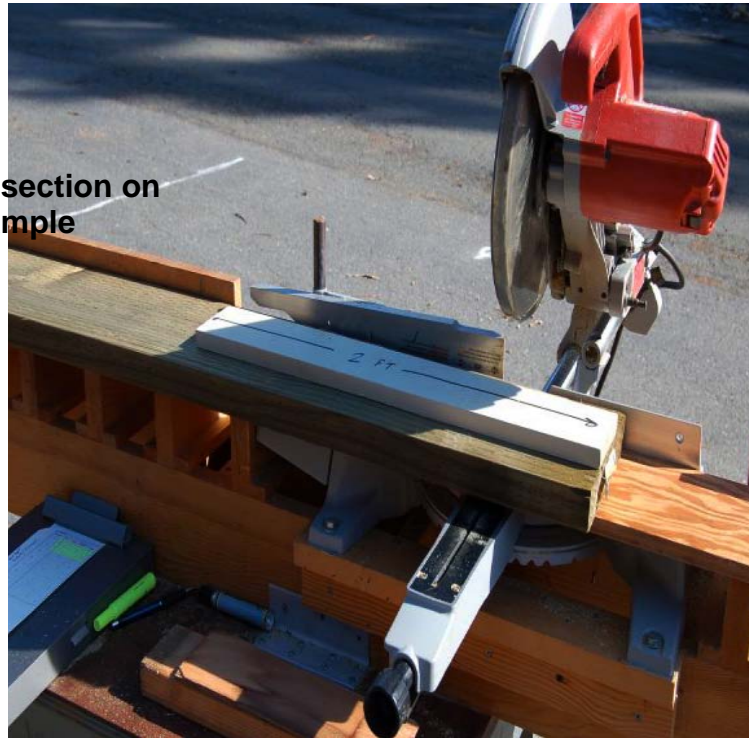


Figure 2 Quarter Processing and Storage



Cutting into quarters



Storing in jars provided by DTSC

Figure 3 Storage of 0.25" Sections



0.25-inch sections for a given replication were stored in a box prior to further processing on the band saw.



Four replications for a given treatment –species combination. Once all reps were prepared, they were immediately processed on the band saw.

Figure 4 Subsection Removed from Cross-cut Section



Prior to preparing the grinding or cube samples, a thin sub-section was removed (using the band saw) and discarded in order to expose a fresh wood surface.

Figure 5 Subsection Removal from Split Cross-cut sections

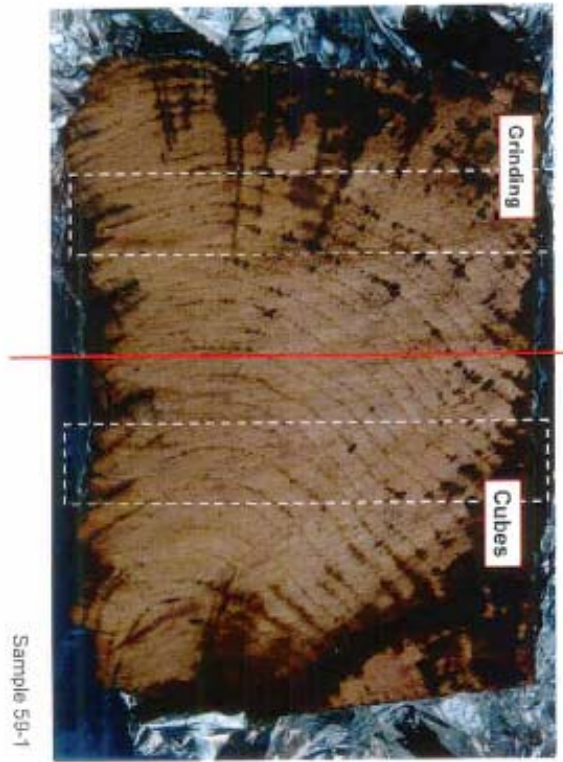
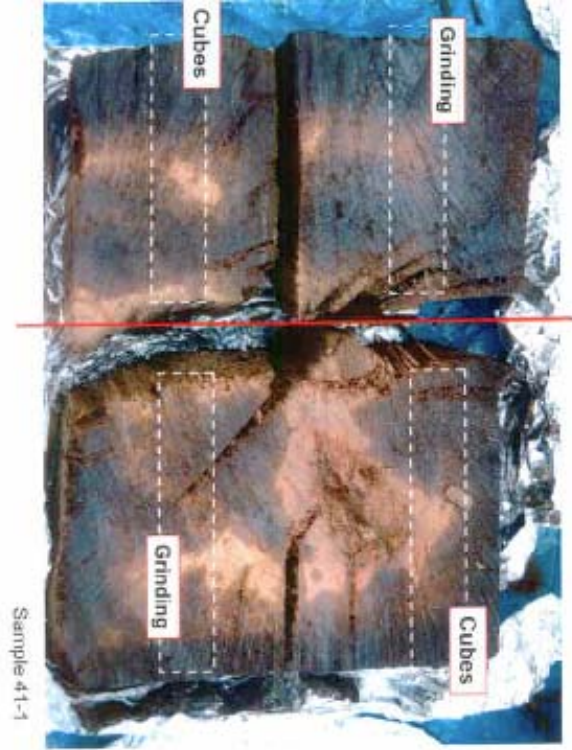


Figure 6 Particle Size Reductions



Thomas-Wiley Laboratory Mill, Model 4 (Thomas Scientific)

Figure 7 TCLP Rotary Agitation and Pressure Filtration Device

