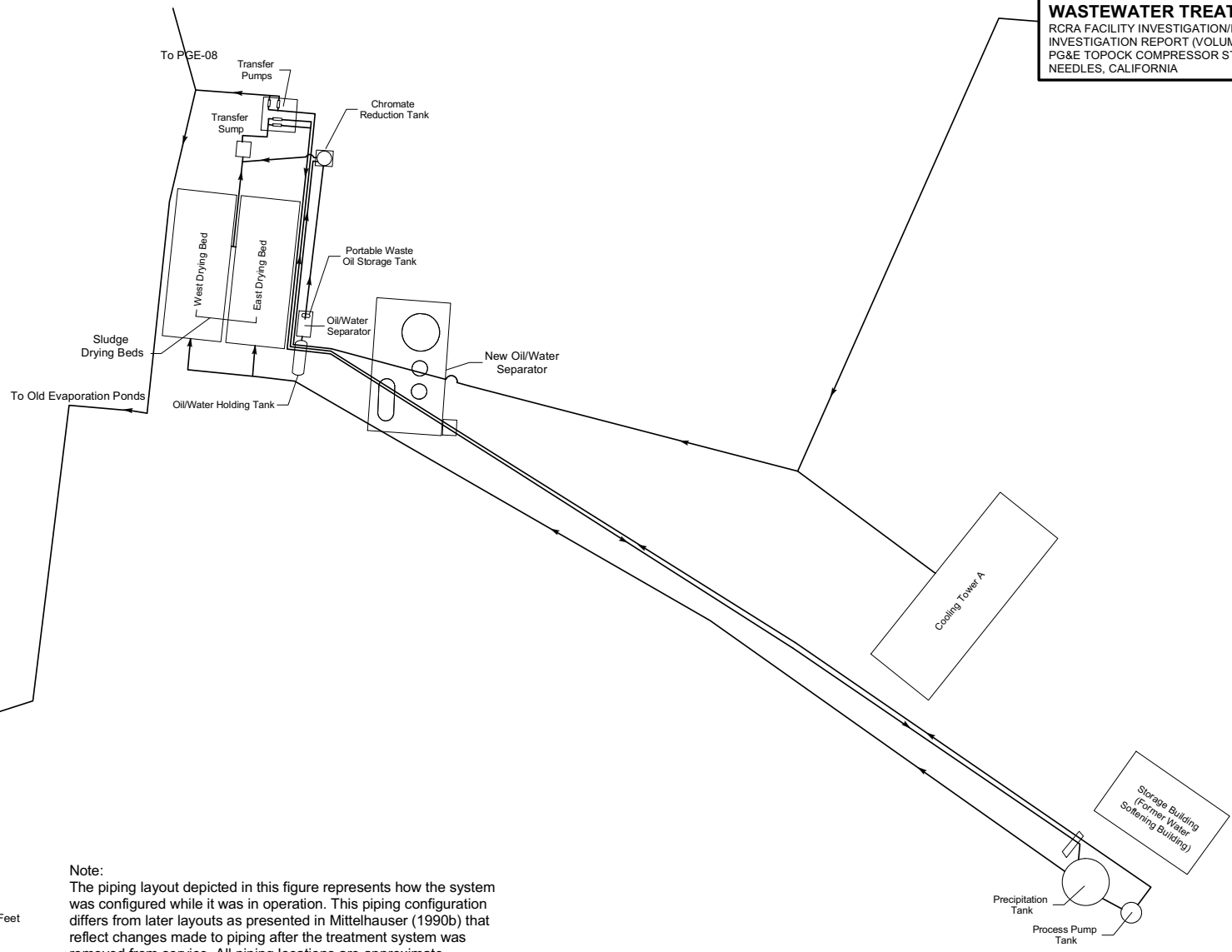
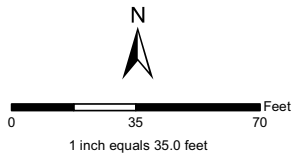


**FIGURE 5-1
LAYOUT OF THE FORMER
WASTEWATER TREATMENT SYSTEMS**
RCRA FACILITY INVESTIGATION/REMEDIAL
INVESTIGATION REPORT (VOLUME 1)
PG&E TOPOCK COMPRESSOR STATION
NEEDLES, CALIFORNIA

CH2MHILL



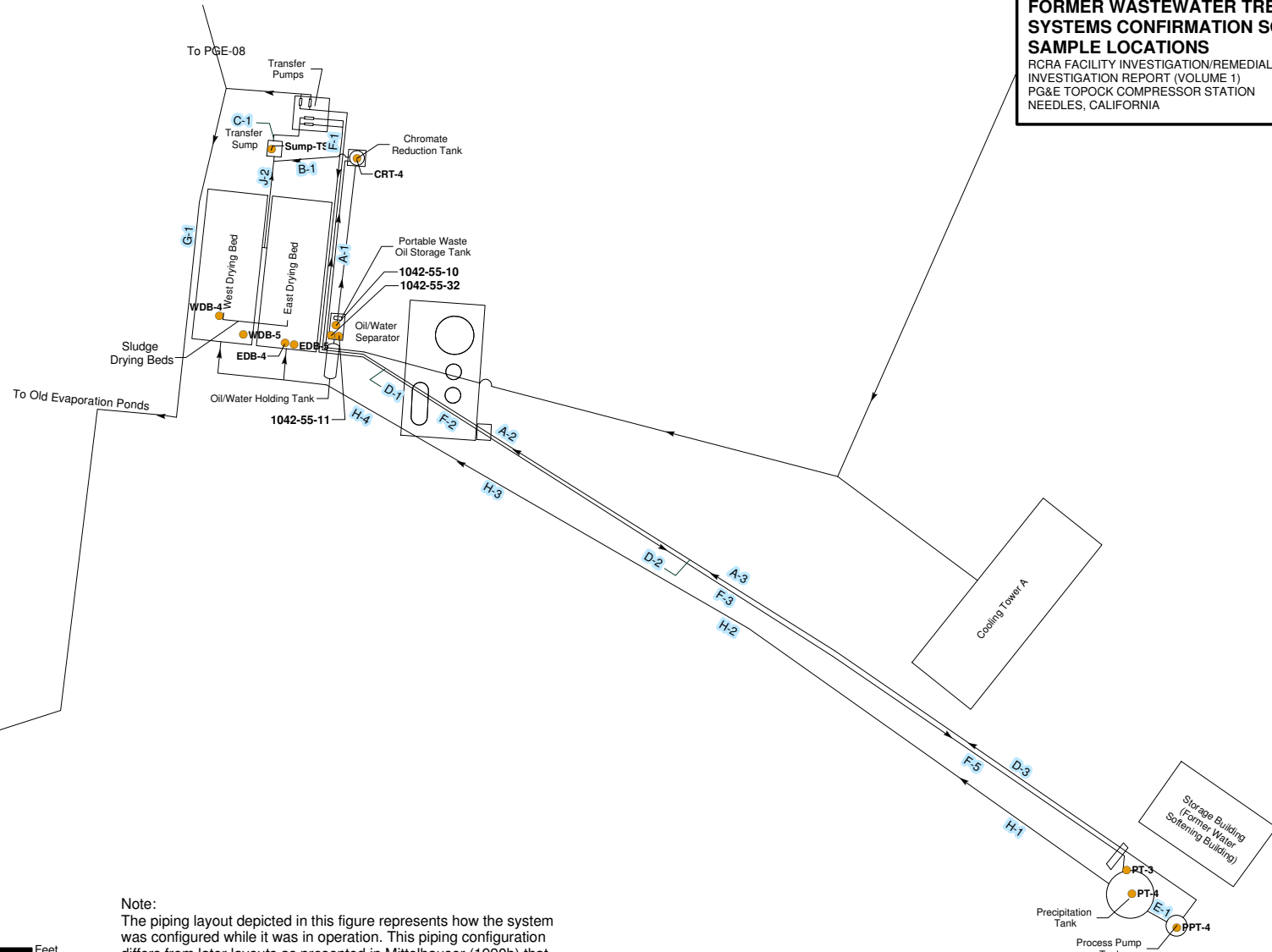
Note:
The piping layout depicted in this figure represents how the system was configured while it was in operation. This piping configuration differs from later layouts as presented in Mittelhauser (1990b) that reflect changes made to piping after the treatment system was removed from service. All piping locations are approximate.



**FIGURE 5-2
FORMER WASTEWATER TREATMENT
SYSTEMS CONFIRMATION SOIL
SAMPLE LOCATIONS**

RCRA FACILITY INVESTIGATION/REMEDIAL
INVESTIGATION REPORT (VOLUME 1)
PG&E TOPOCK COMPRESSOR STATION
NEEDLES, CALIFORNIA

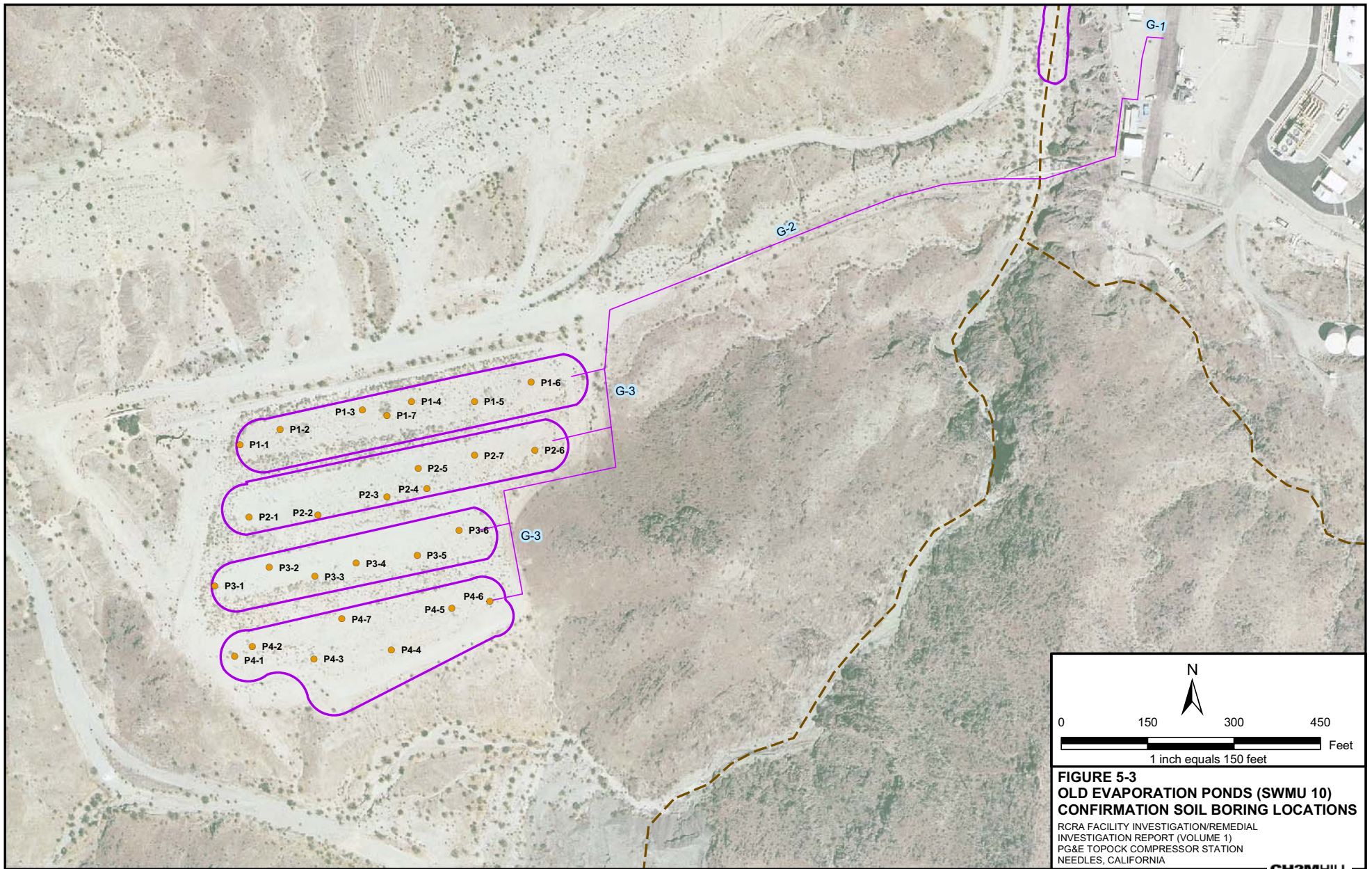
CH2MHILL



Note:
The piping layout depicted in this figure represents how the system was configured while it was in operation. This piping configuration differs from later layouts as presented in Mittelhauser (1990b) that reflect changes made to piping after the treatment system was removed from service. All piping locations are approximate.



0 35 70 Feet
1 inch equals 35 feet



**FIGURE 5-4
FORMER WASTEWATER TREATMENT
SYSTEMS PIPING
CONFIRMATION SOIL SAMPLE LOCATIONS**
RCRA FACILITY INVESTIGATION/REMEDIAL
INVESTIGATION REPORT (VOLUME 1)
PG&E TOPOCK COMPRESSOR STATION
NEEDLES, CALIFORNIA

CH2MHILL

