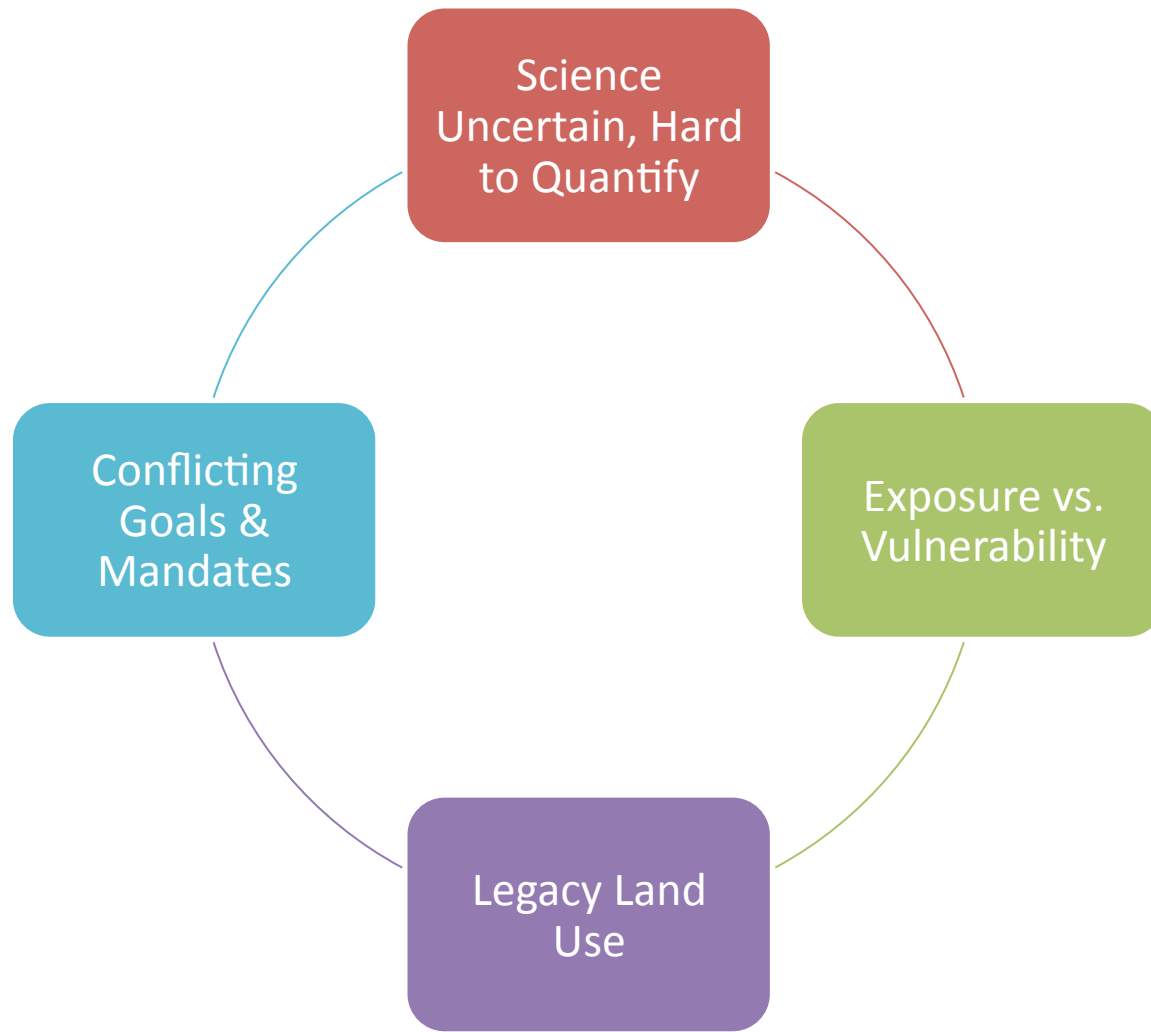


Cumulative Impacts: Business Perspective

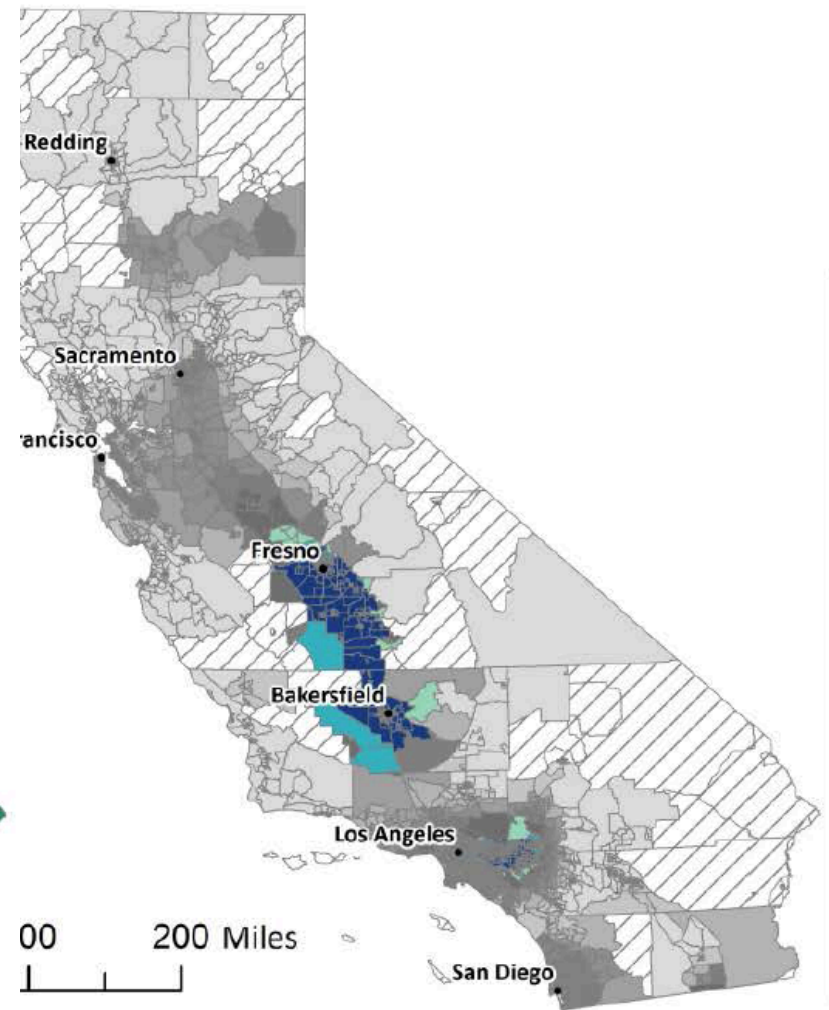
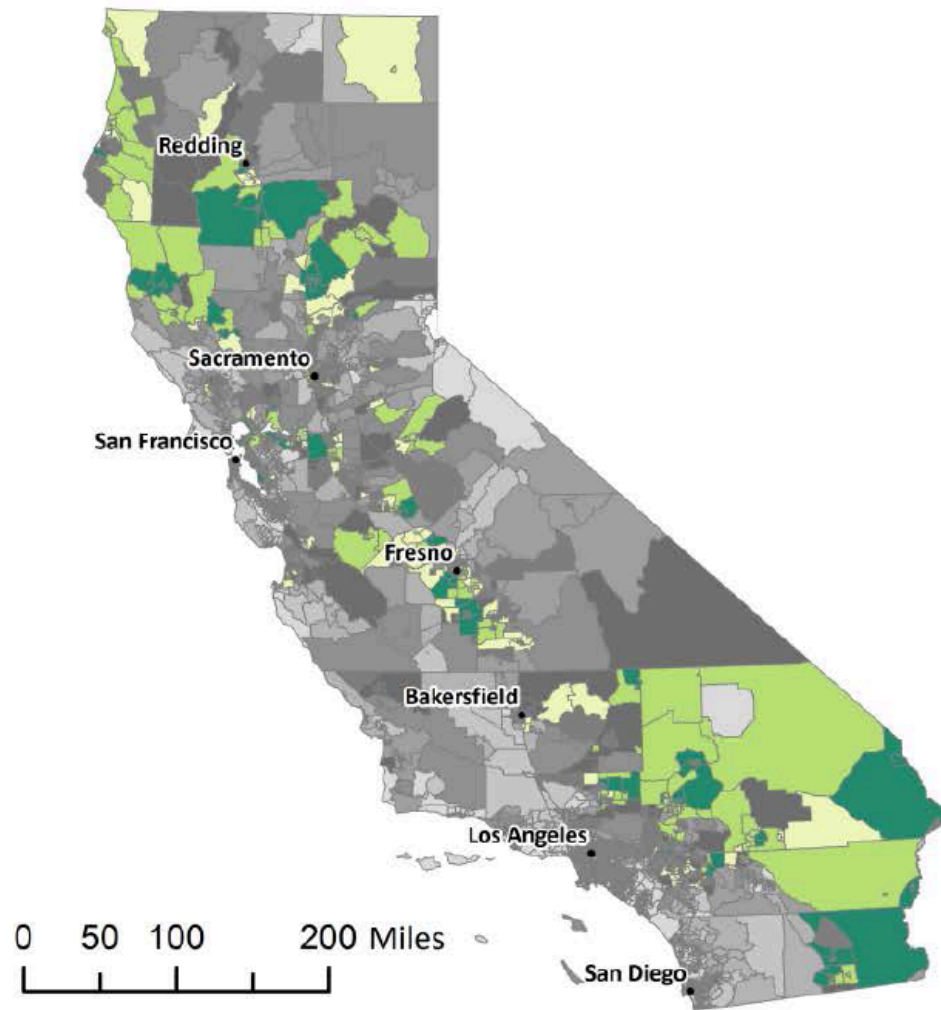
Janet Whittick, California Council for
Environmental and Economic Balance

Cumulative Impacts: ~~Challenges~~ Questions



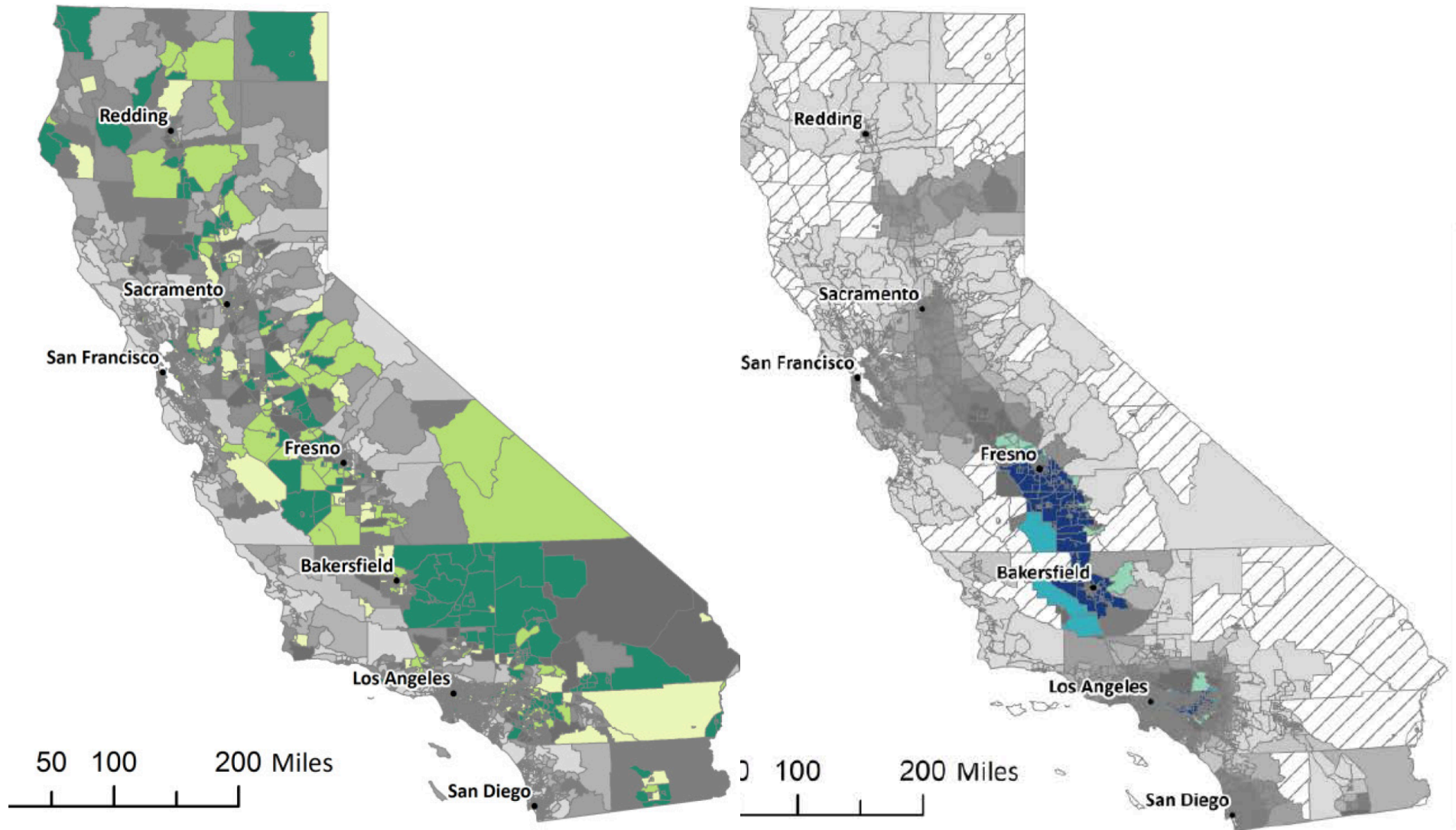
CalEnviroScreen

Asthma ER (green) vs. PM2.5 (blue)



CalEnviroScreen

Cardiovascular Disease (green) vs. PM2.5 (blue)



Exposure vs. Vulnerability

- What problem(s) are we trying to solve? What tools to use?
- CalEnviroScreen is a *subset* of Vulnerable/Disadvantaged Communities

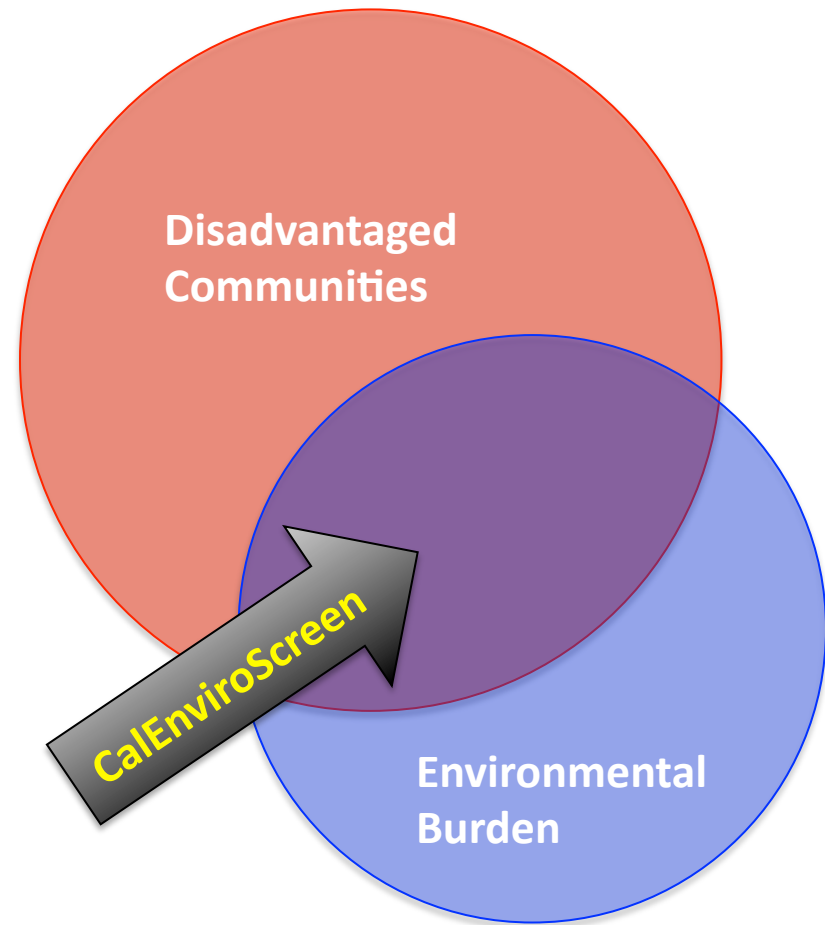
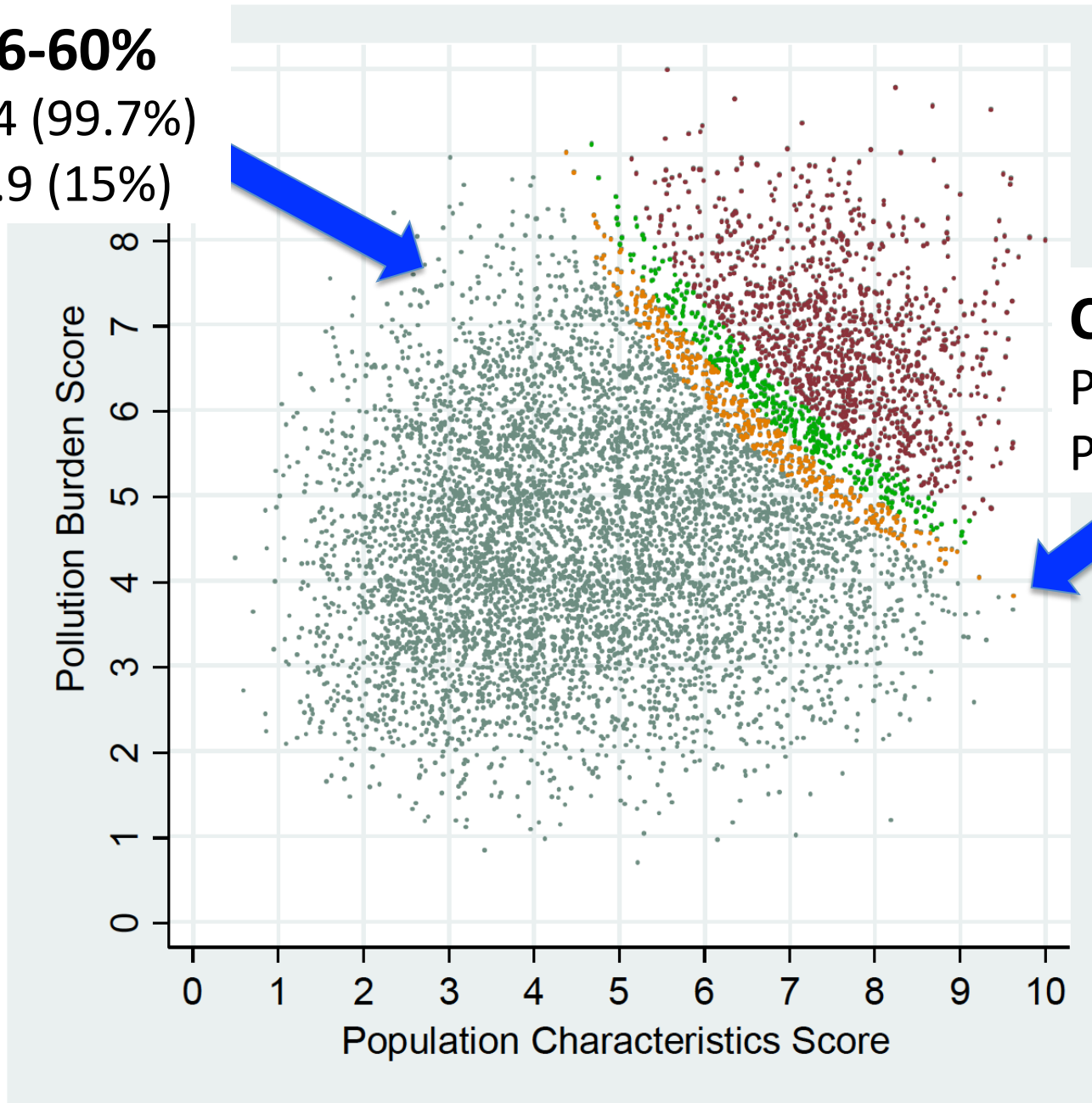


Figure 2. Using combined pollution burden scores and population characteristics scores to identify disadvantaged communities (Method 1)

CES 56-60%

Pol. 7.4 (99.7%)

Pop. 2.9 (15%)



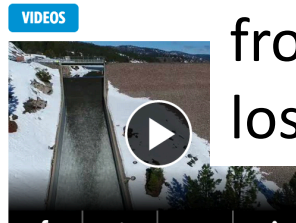
CES 81-85%

Pol. 3.4 (35%)

Pop. 9.2 (99.9%)

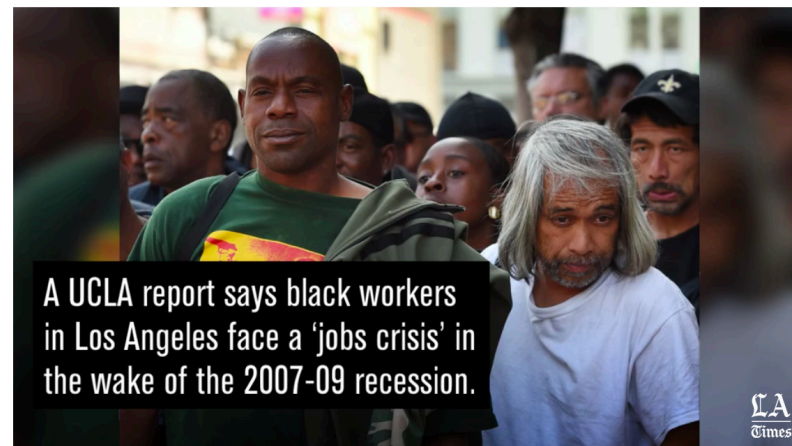
CALIFORNIA MARCH 5, 2017 4:00 AM

California exports its poor to Texas, other states, while wealthier people move in



“About 2.5 million people living close to the official poverty line left California for other states from 2005 through 2015...a net loss of 800,000.”

Black workers in Los Angeles face a 'jobs crisis,' UCLA report says

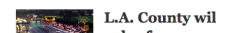


The black population in L.A. County plunged by 122,032 people from 1980 to 2014, according to the report. (March 21, 2017) <http://bit.ly/2n6VKPR>

By **Natalie Kitroeff**

“17% of black workers were unemployed on average from 2011 to 2014....The lack of work is part of the reason many black residents have abandoned Los Angeles”

In Case You Missed



Legacy land use, jurisdictional conflicts, and competing mandates



Closing Thoughts

- Clear problem identification
- Develop local-/project-scale analytic tools
- Recognize progress made...and challenge of marginal costs
- Honesty about competing goals...overcome silos, holistic approach
- Admit to tradeoffs—among media, among sectors, and social-environmental-economic