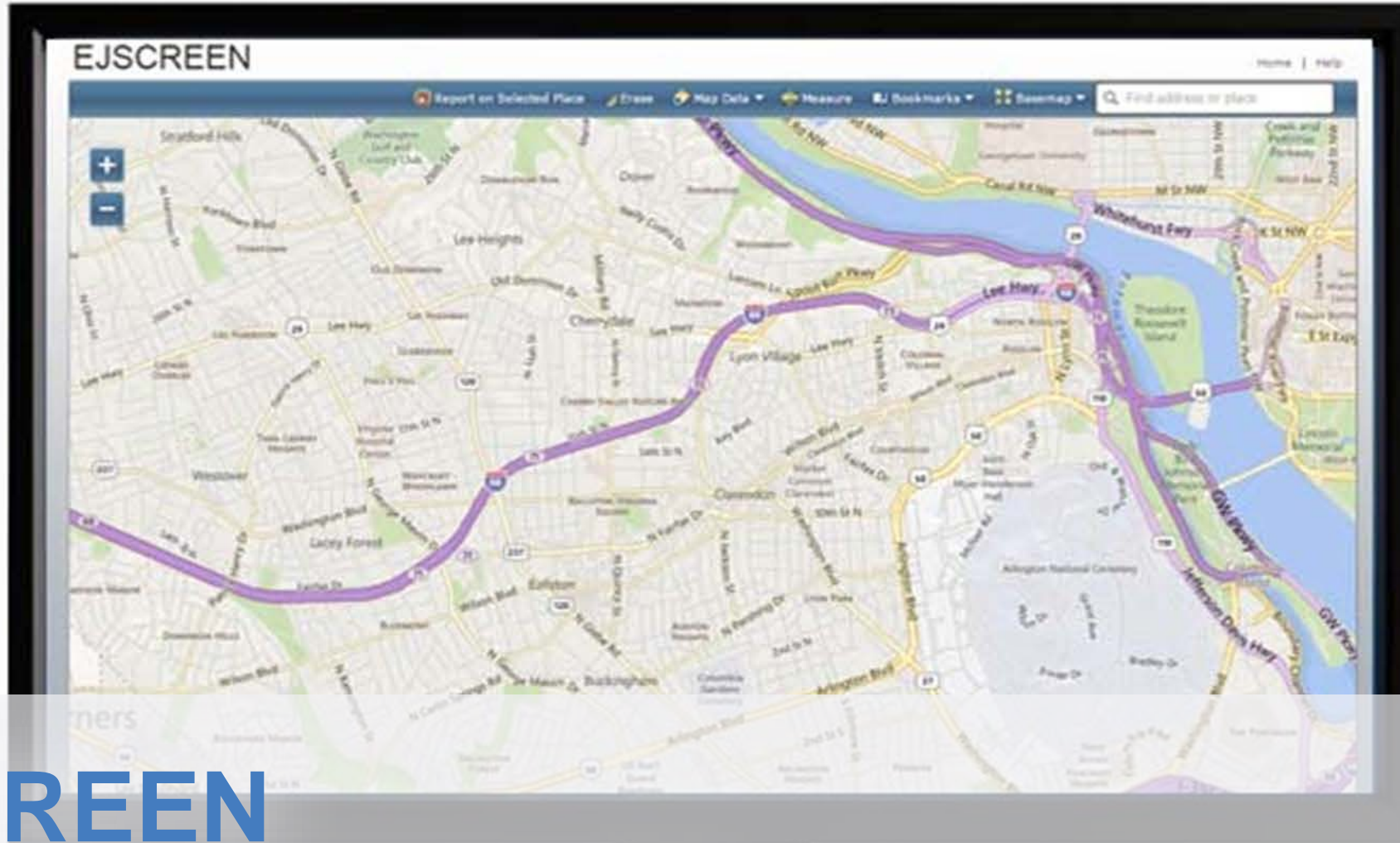


*Please note:
Formatting has been
altered to meet
accessibility
standards for State
documents (Section
11546.7 of the
California
Government Code).
Content has not
been modified.*



EJSCREEN

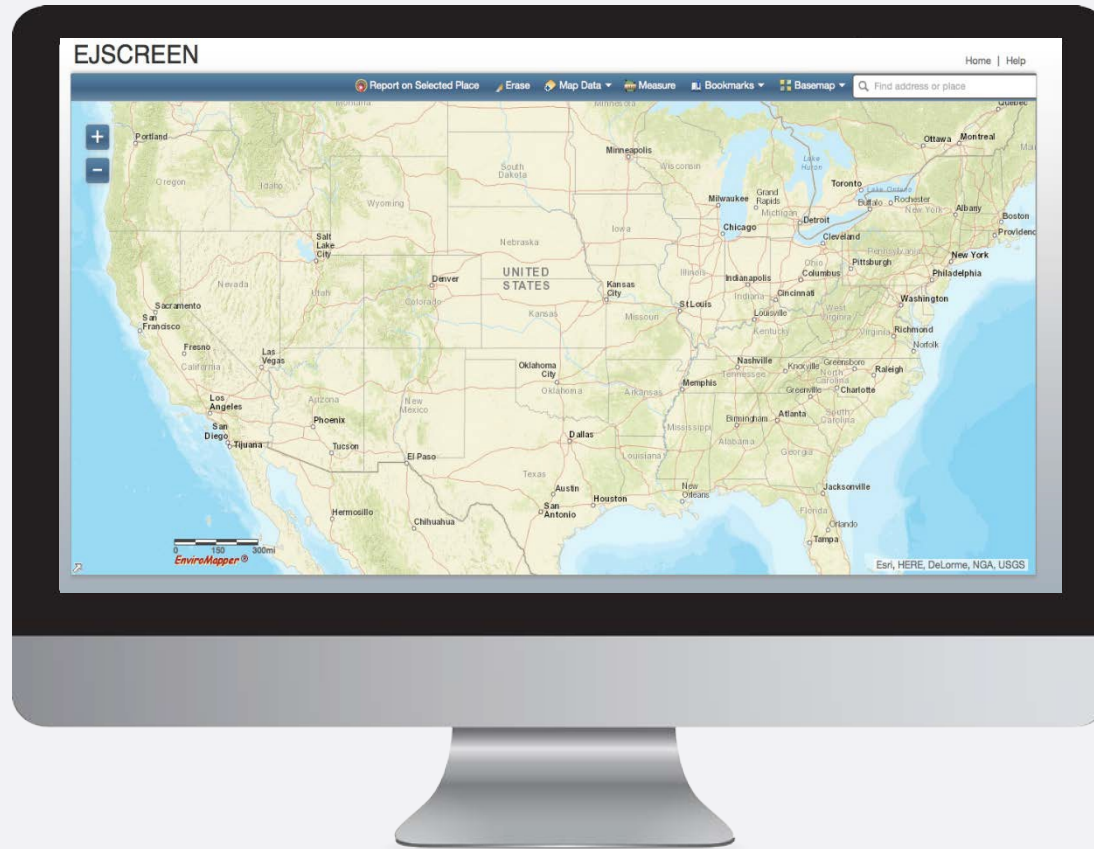
EPA's Environmental Justice Screening Tool

EJSCREEN

**EPA'S ENVIRONMENTAL
SCREENING TOOL**

EJSCREEN

Key Features



EJ Indexes

Combine demographic and environmental data to highlight vulnerable/susceptible populations



Annually Updated Data

from most recent U.S. Census Bureau American Community Survey (ACS).



Accessible and Intuitive

Standard printable reports, maps, and bar graphs



High Resolution Data

Census block group and tracts for units of analysis

About Vulnerability

How we...

are born

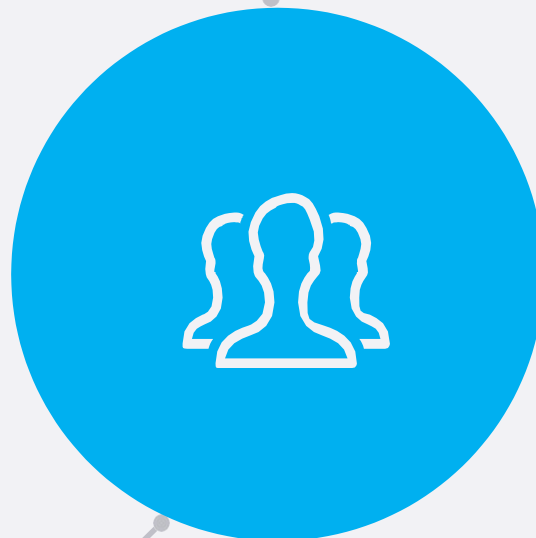
grow

live

learn

work

play



distribution factors

Race

Ethnicity

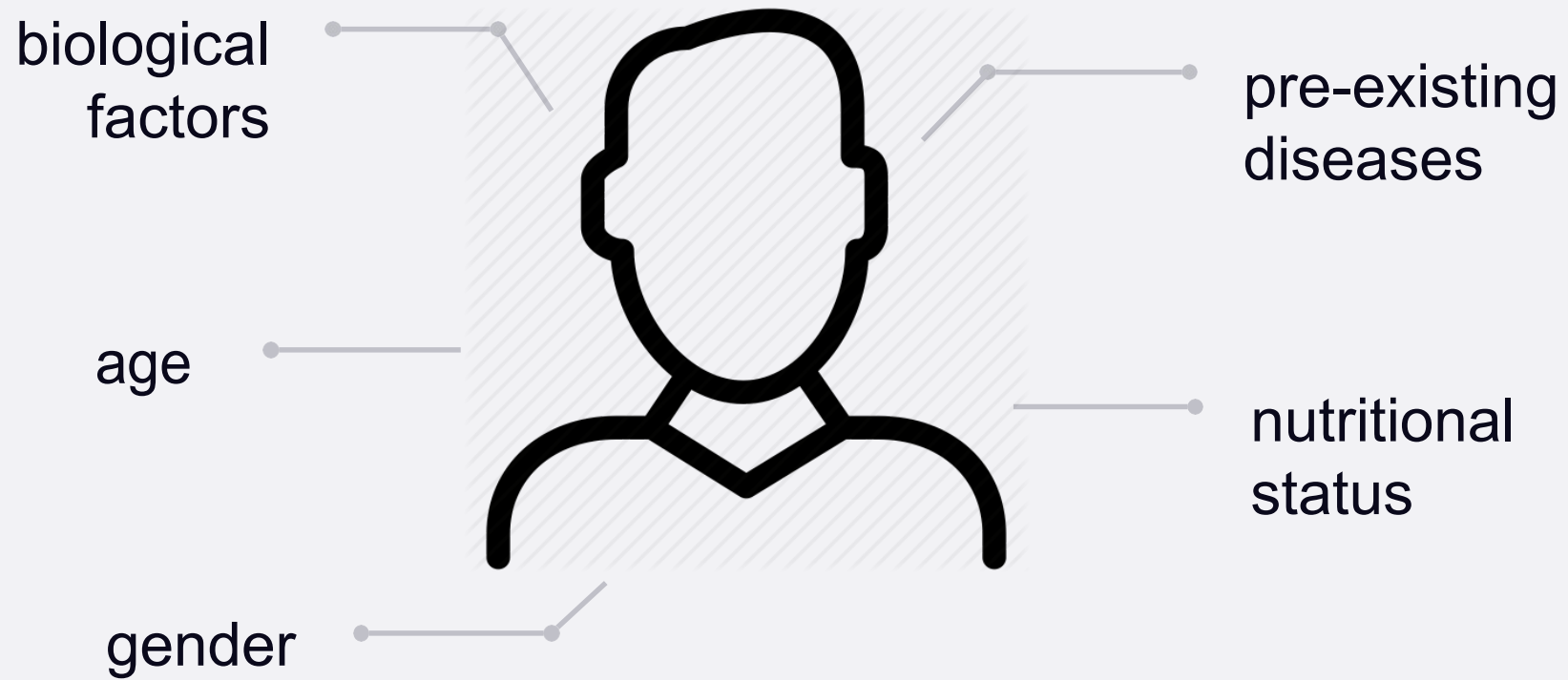
Social Standing

Income

Education

social
determinants

About Susceptibility



| Understand these caveats before using

- Environmental indicators are mostly screening-level proxies for actual exposure or risk.
- Indicators vary in vintage. Estimates are based on historical data. and may not reflect current or future conditions.
- EJSCREEN does not cover all environmental issues.
- EJSCREEN does not identify “EJ communities.”

UNITS OF ANALYSIS



United States



State

primary governmental divisions of the United States.



County

Largest divisions within states.



Census Tract

Collection of Census block groups, mostly between 1,200 and 8,000 people.



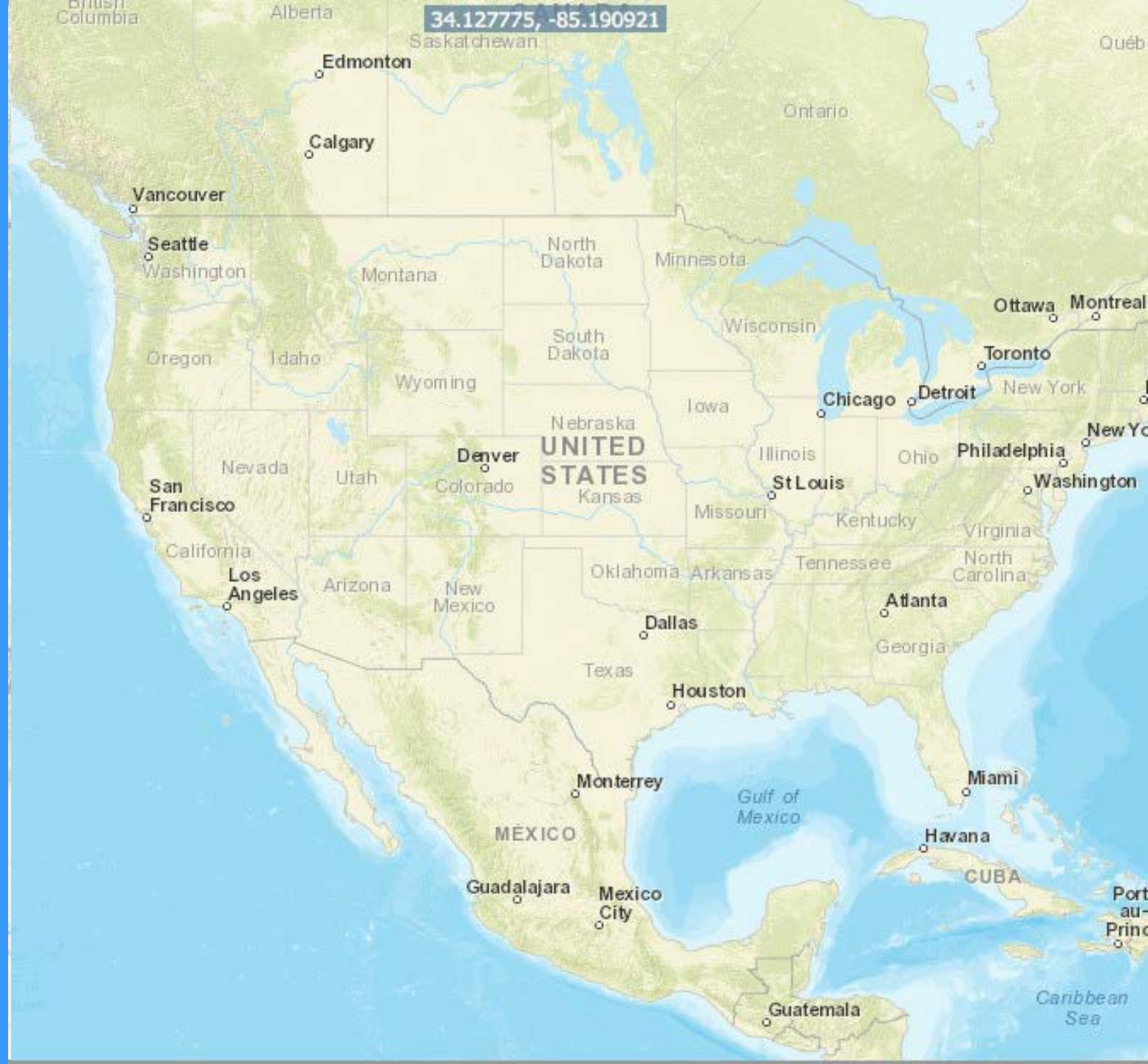
Block Group

Collection of residential blocks, mostly, between 600 and 3,000 people.



Block

Residential block, bounded on all sides by streets.



Results are ranked as percentiles

- Percentiles put indicators into common units of 0 – 100.
- For example, a place at the 80th percentile nationwide means 20% of the US population has a higher value.
- Ranking values as percentiles allows comparison of indicators measured with different units. It does not mean the risks are equal or comparable.

