

Health Impact Assessment: Linking Public Health to Community Decisions

Shannon Griffin

*US EPA Office of Research and
Development*

July 27, 2017



INTRODUCTION TO HIA

“The highest standards of health should be within reach of all, without distinction of race, religion, political belief, economic, or social condition.”

-Constitution of the World Health Organization

Health in All Policies (HiAP)

Programs, policies, plans, and projects can have intended and unintended health consequences, especially if discussions in the decision-making process are limited to a particular set of issues

Health in All Policies is a strategy that:

- Strengthens the link between health and other policies, across sectors and at all levels, to improve the health of all communities and people
- Considers the intentional or unintentional impact of non-health policies on individual or population health



What is Health?

Health

“A state of complete physical, mental, and social well-being; not merely the absence of disease and infirmity”

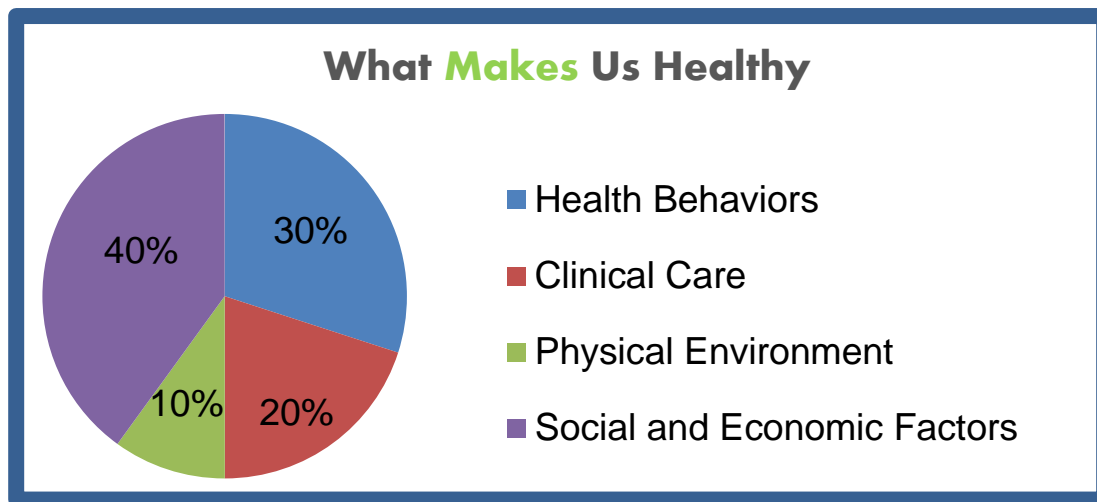
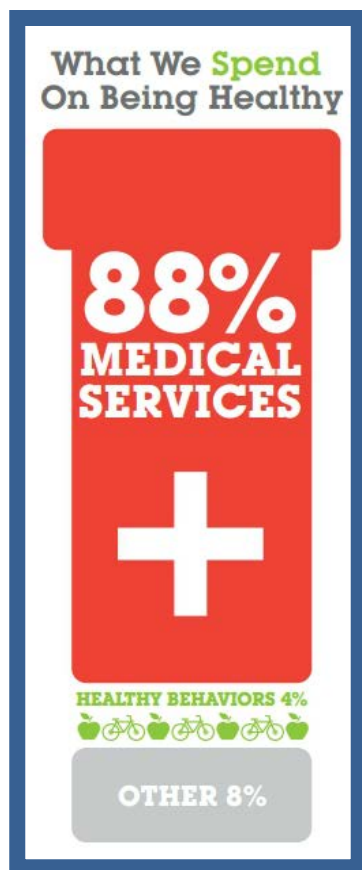
- Preamble to the Constitution of the World Health Organization



Health is an indicator of **quality of life**

What is Health?

Good health is determined by more than money spent on health care.



- Booske et al. 2010. Different perspectives for assigning weights to determinants of health. *County Health Rankings Working Paper*.

What is health?

The factors known to directly or indirectly impact human health are referred to as **determinants of health**

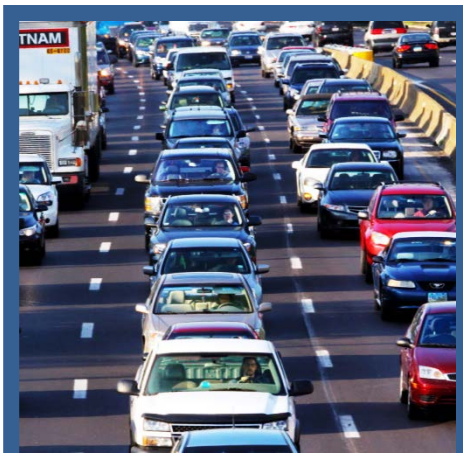
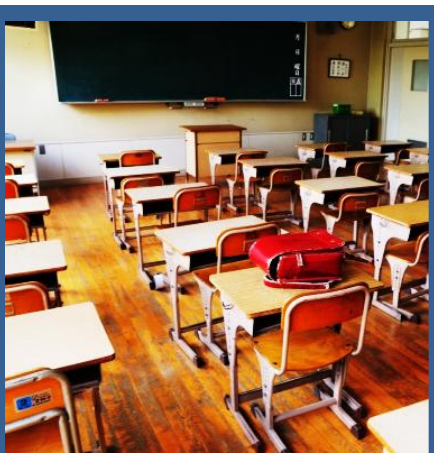


- Human Impact Partners. 2011. *A Health Impact Assessment Toolkit: A Handbook to Conducting HIA*, 3rd edition.

Health in All Policies (HiAP)

Health impact assessment (HIA) is one of the key strategies for moving toward a health in all policies perspective

- Offers a comprehensive approach to health
- Applicable in a broad range of decision-making contexts



What is HIA?

Health Impact Assessment

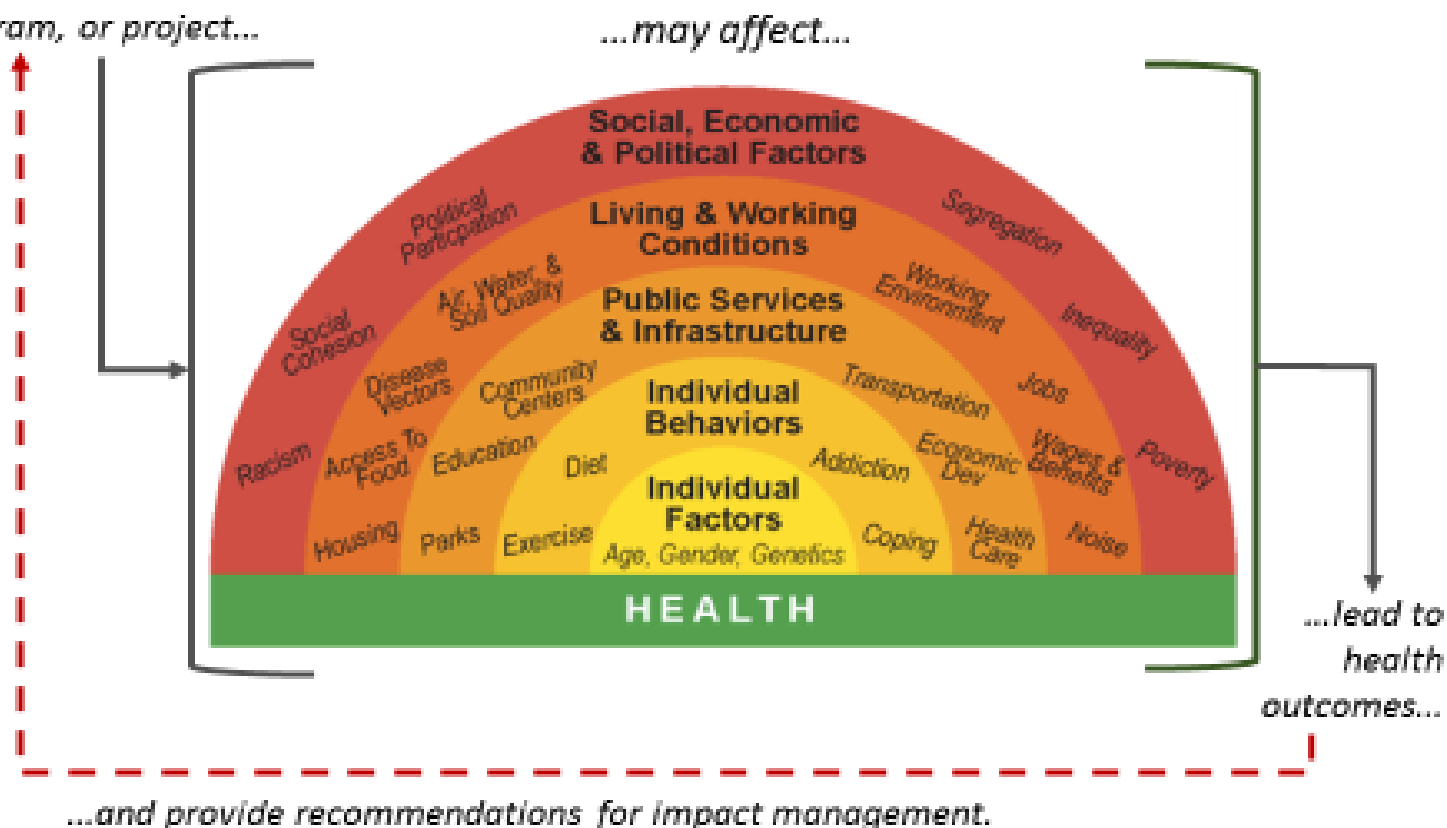
“A systematic process that uses an array of data sources and analytic methods and **considers input from stakeholders** to determine the **potential effects** of a proposed policy, plan, program, or project **on the health of a population** and the distribution of those effects within the population. HIA **provides recommendations** on monitoring and managing those effects.”

- National Research Council. 2011. *Improving Health in the United States: The Role of Health Impact Assessment*.

What is HIA?

In a nutshell, HIAs:

*Evaluate how a
proposed policy, plan,
program, or project...*



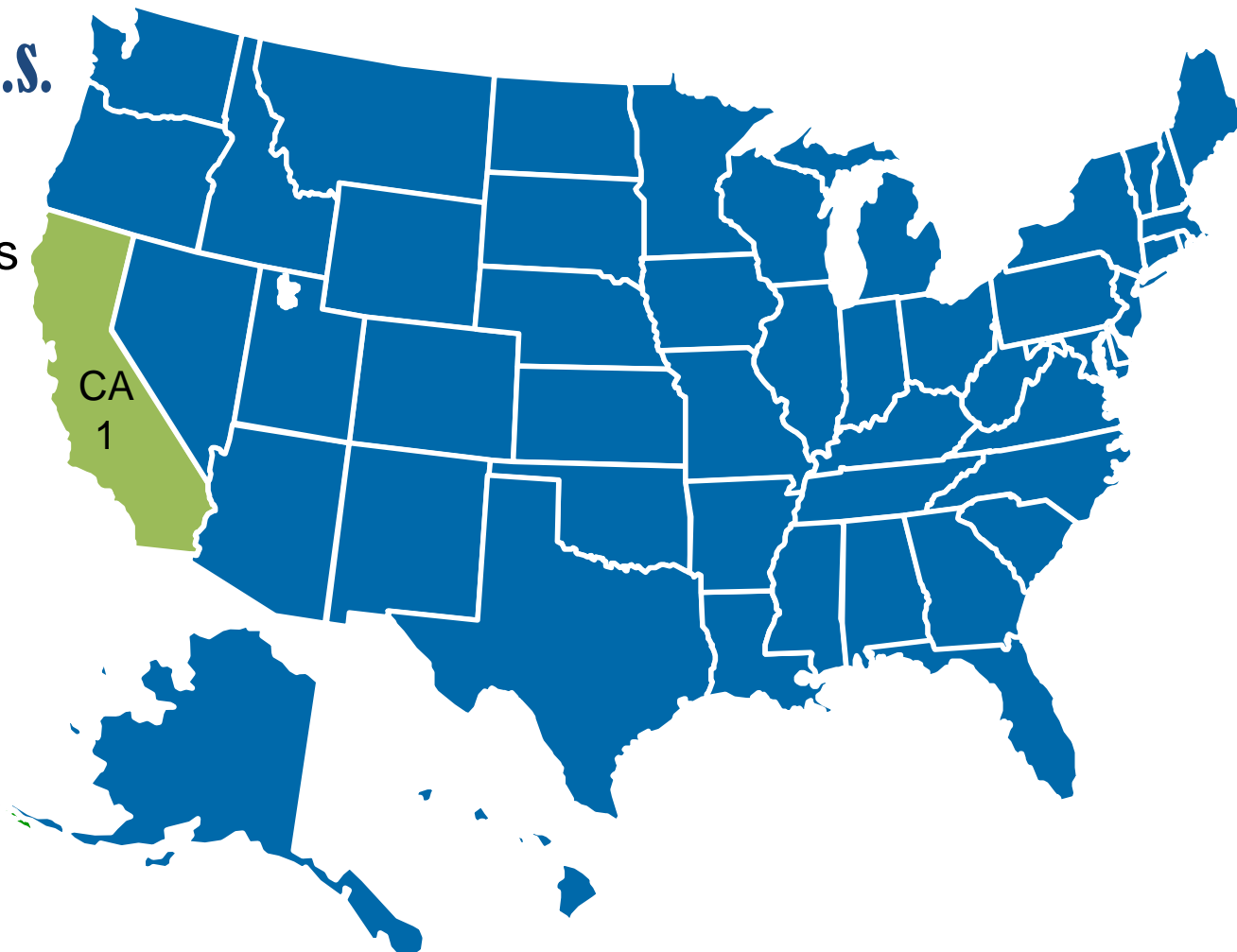
History of HIA in the U.S.

First HIA in the U.S.

1999

Completed HIAs

(N=1)



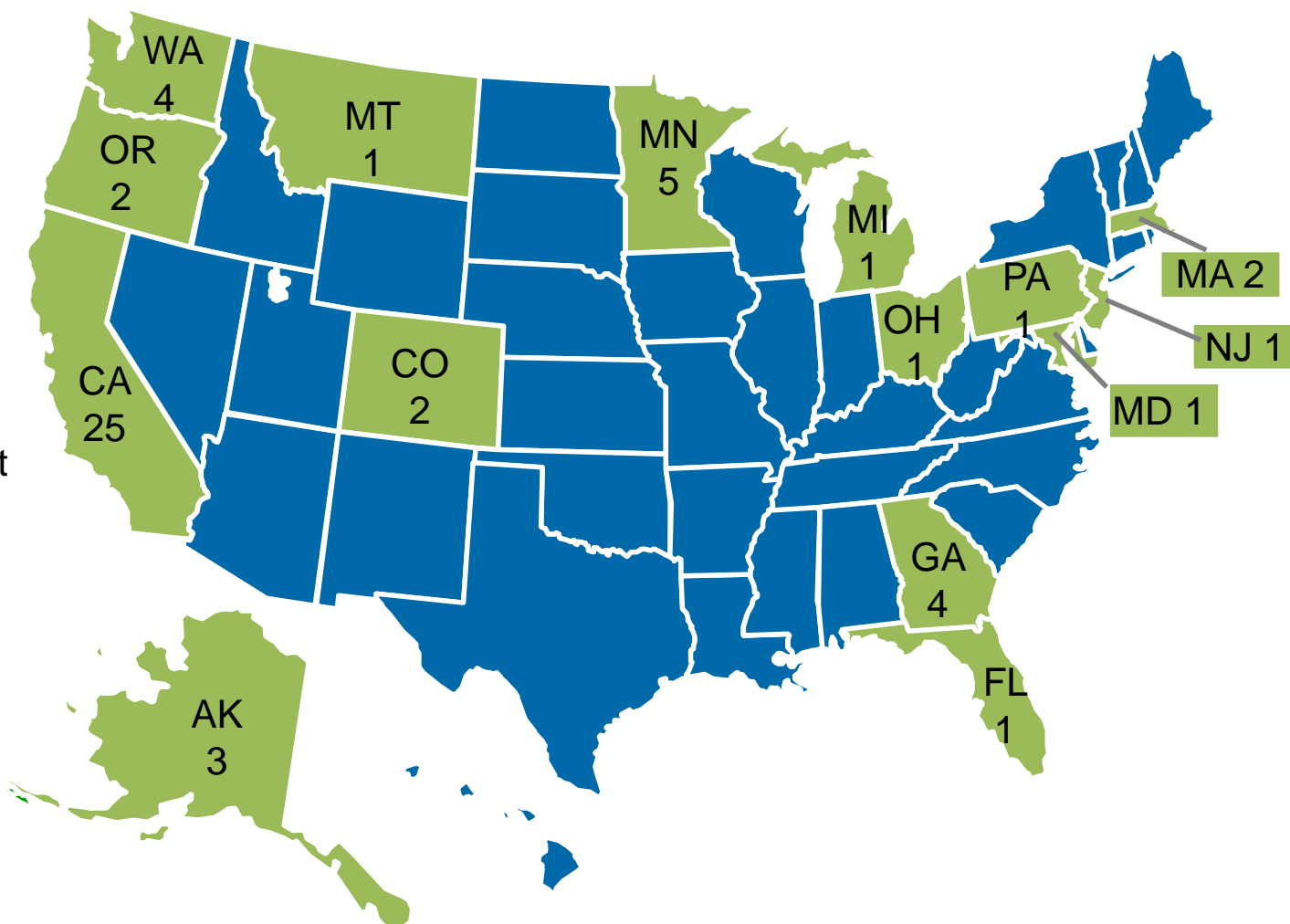
History of HIA in the U.S.

HIAs in the U.S.

2009 (10 years)

Completed HIAs
(N=54)

Health Impact Project
Founded 2009

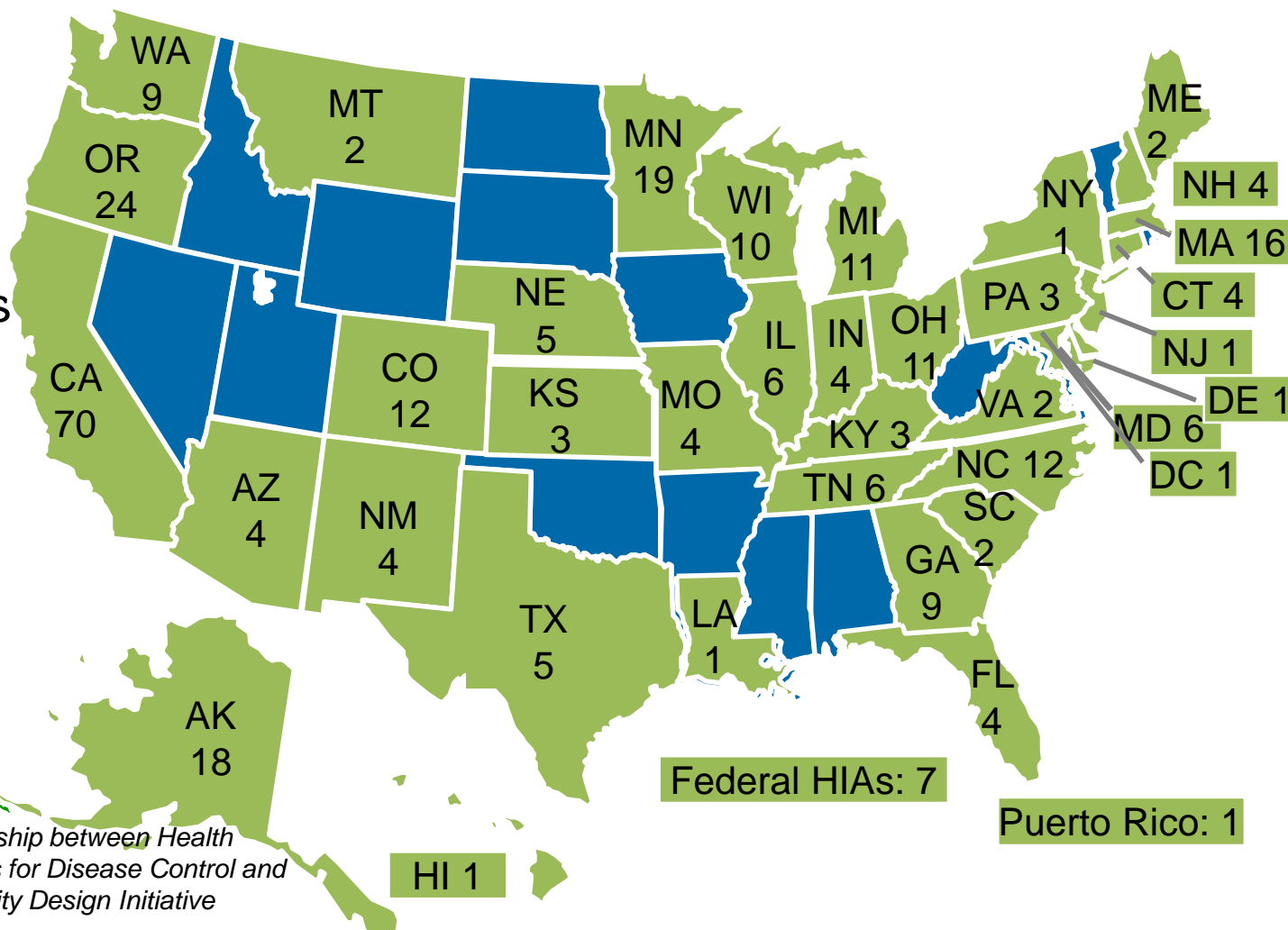


History of HIA in the U.S.

HIAs in the U.S.

2014 (15 years)

Completed and
In Progress HIAs
(N=308)



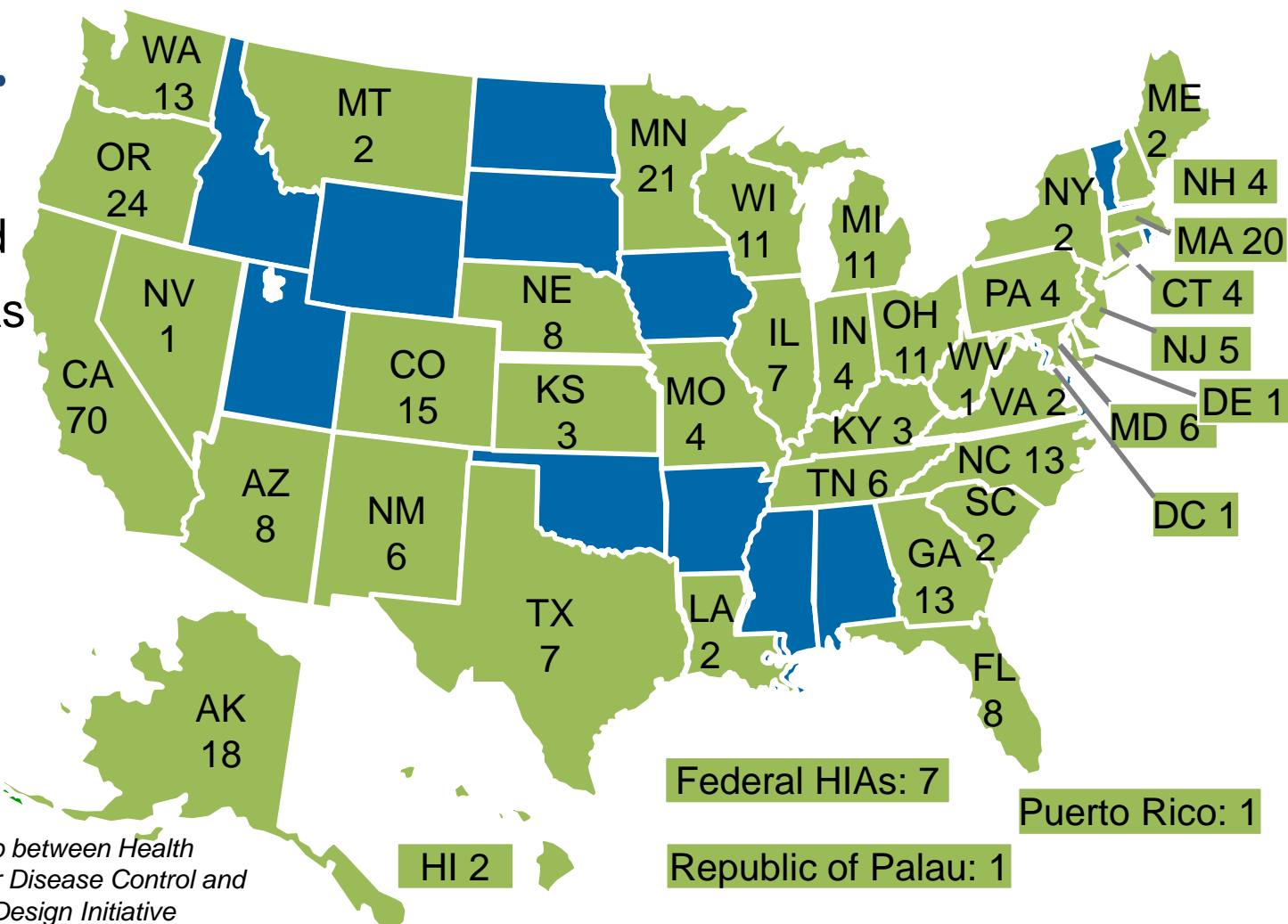
Map created through a partnership between Health Impact Project and the Centers for Disease Control and Prevention's Healthy Community Design Initiative

History of HIA in the U.S.

HIAs in the U.S.

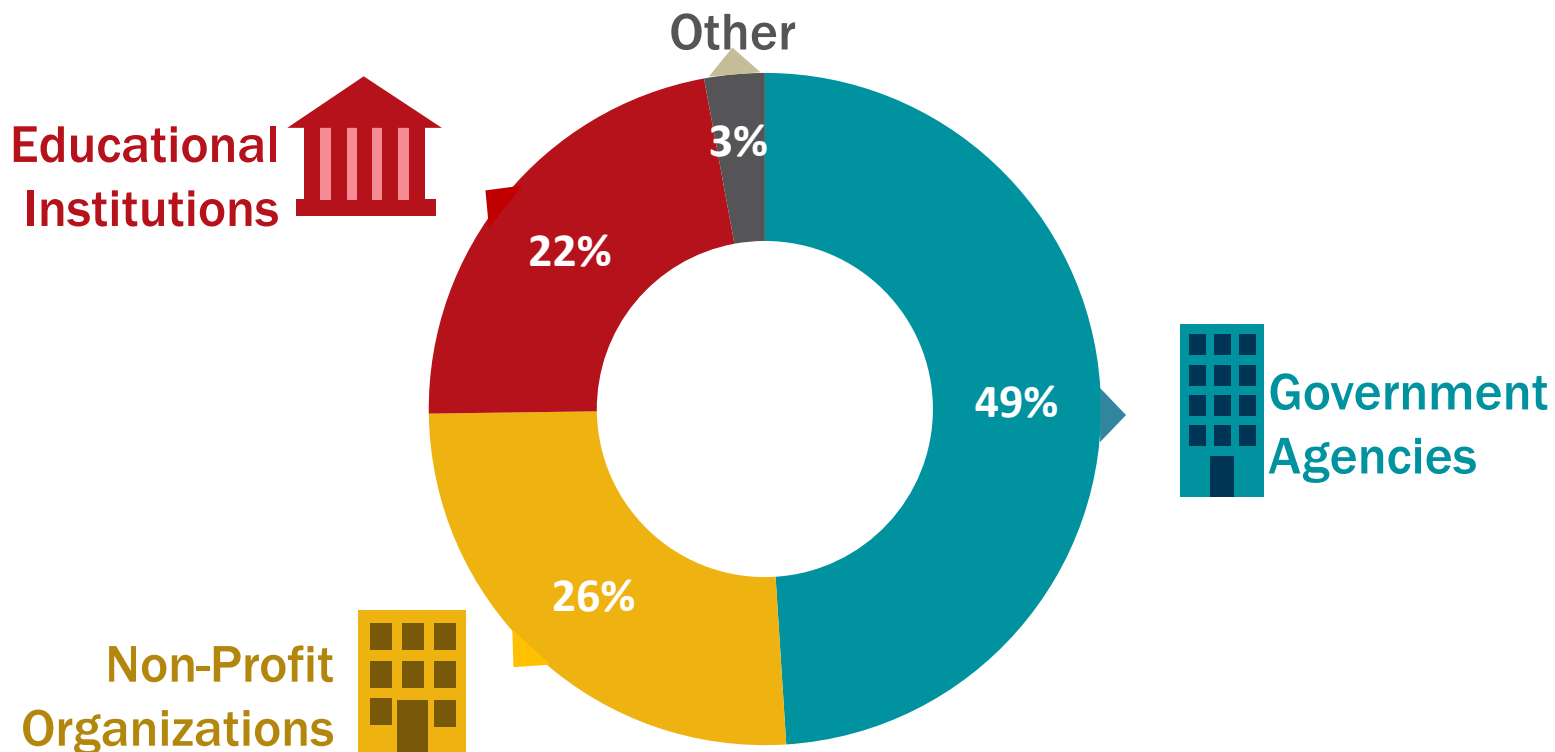
mid-2015

Completed and
In Progress HIAs
(N=354+)



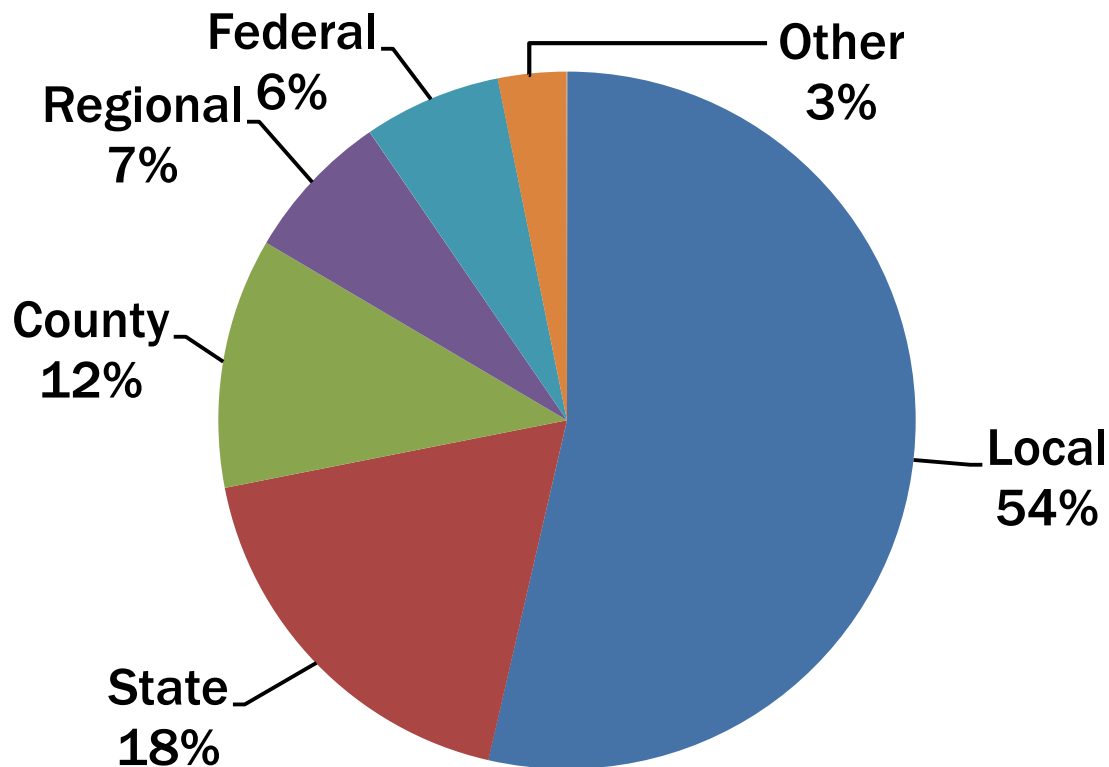
Context of HIA

Who is Performing HIAs in the U.S.?



Context of HIA

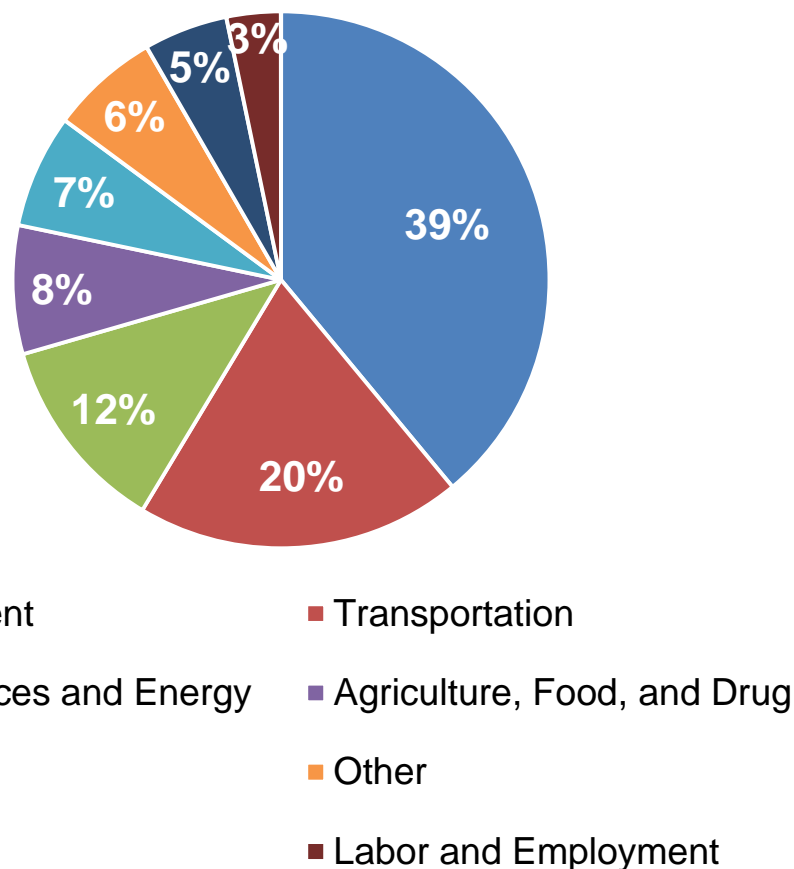
Levels of Decision-Making Informed by HIAs in the U.S.



Context of HIA

Broad Applicability/Flexibility

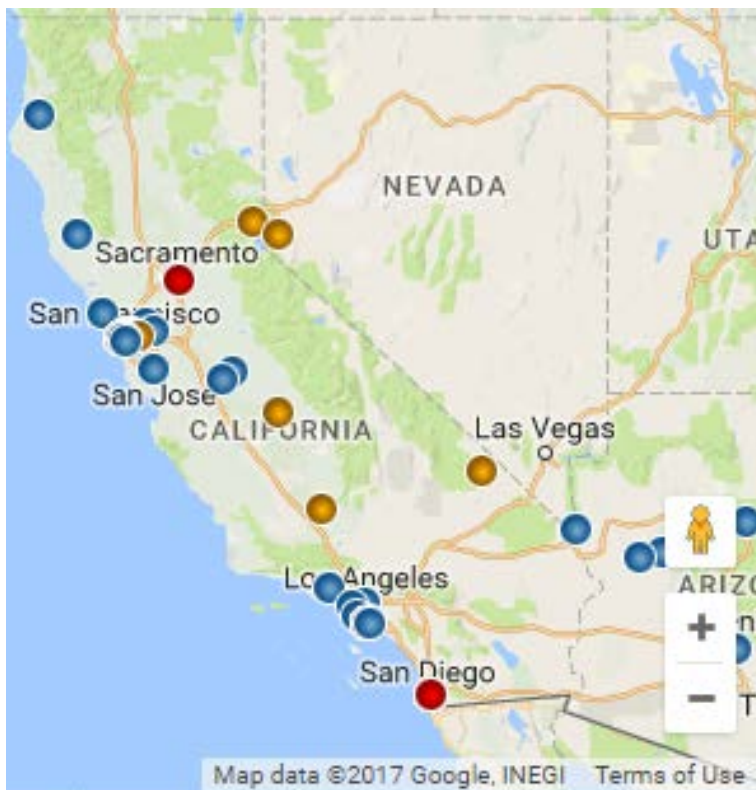
HIA has been promoted throughout the world as a tool for protecting and promoting public health because of its applicability in a broad range of decision-making contexts



Source: Health Impact Project. Data
Visualization: HIA in the United States;
accessed 7/17/2015

Other includes: Community Development, Criminal Justice,
Economic Policy, Gambling, Physical Activity, and Water

HIA in California (n=82)



LEGEND

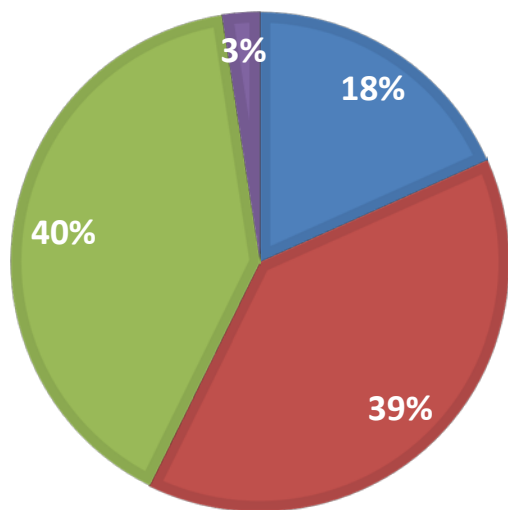
- HIA
- Health Impact Project-Funded HIA
- Multiple HIAs

<p>ct Assessment X</p> <p>www.pewtrusts.org/en/multimedia/data-visualizations/2015/hia-map</p> <p>THE PEW CHARITABLE TRUSTS</p> <p>SEARCH <input type="text"/> <input type="button" value="Q"/></p> <p><input type="button" value="MEN"/></p>						
<p>Hermosa Beach Oil Production Project</p> <p>An HIA of a proposed oil production project in Hermosa Beach, California. The project includes exploration and directional drilling to extract oil and gas from offshore and onshore tidelands, and onshore upland areas within the City of Hermosa Beach, as well as underground pipelines to convey oil and gas within and beyond the city limits.</p>	Hermosa Beach	California	Complete	Natural Resources and Energy	Local	City of Hermosa Beach (California)
<p>HIA of Policies and Programs to Process Truancy Citations in Los Angeles County</p> <p>This health impact assessment will help inform the Los Angeles County as it continues to refine its policies and protocols for the processing police-issued citations for daytime curfew violation.</p>	Los Angeles	California	In Progress	Education	Local	Los Angeles County Department of Public Health
<p>HIA of Providing Free or Reduced-Fare Student Bus Passes to Reduce Truancy</p> <p>This health impact assessment helped inform Los Angeles County as it continues to refine its policies and protocols for the processing police-issued citations for daytime curfew violation.</p>	Los Angeles	California	Complete	Education	Local	Los Angeles County Department of Public Health
<p>HOPE VI to HOPE SF: San Francisco Public Housing Redevelopment</p> <p>An HIA that looked retrospectively at efforts to rebuild two affordable housing projects in San Francisco, California under the U.S. Department of Housing and Urban Development's HOPE VI program.</p>	San Francisco	California	Complete	Housing	Local	University of California Berkeley Health Impact Group, Human Impact Partners
<p>Humboldt County General Plan Update</p> <p>An HIA that addressed the health implications of an update to the General Plan in Humboldt County, a rural community in Northern California.</p>	Humboldt County	California	Complete	Built Environment	County	County of Humboldt Department of Health and Human Services: Public Health Branch, Human Impact Partners, Humboldt Partnership for

HIA in California

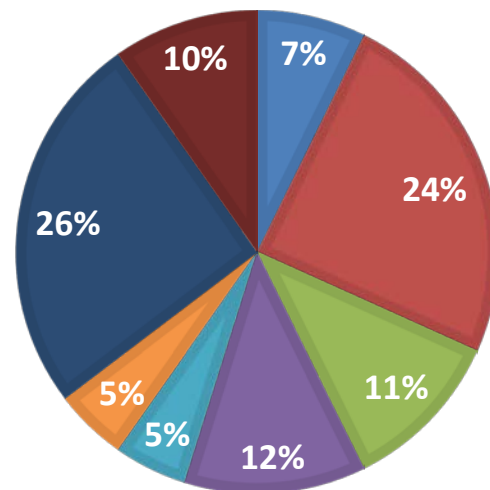
Organization type:

- Educational Institution
- Government Agency
- Nonprofit
- Other



Sector type:

- Agriculture, Food and Drug
- Built Environment
- Education
- Housing
- Labor and Employment
- Natural Resources and Energy
- Transportation
- Other



Why perform an HIA?

Benefits of HIA

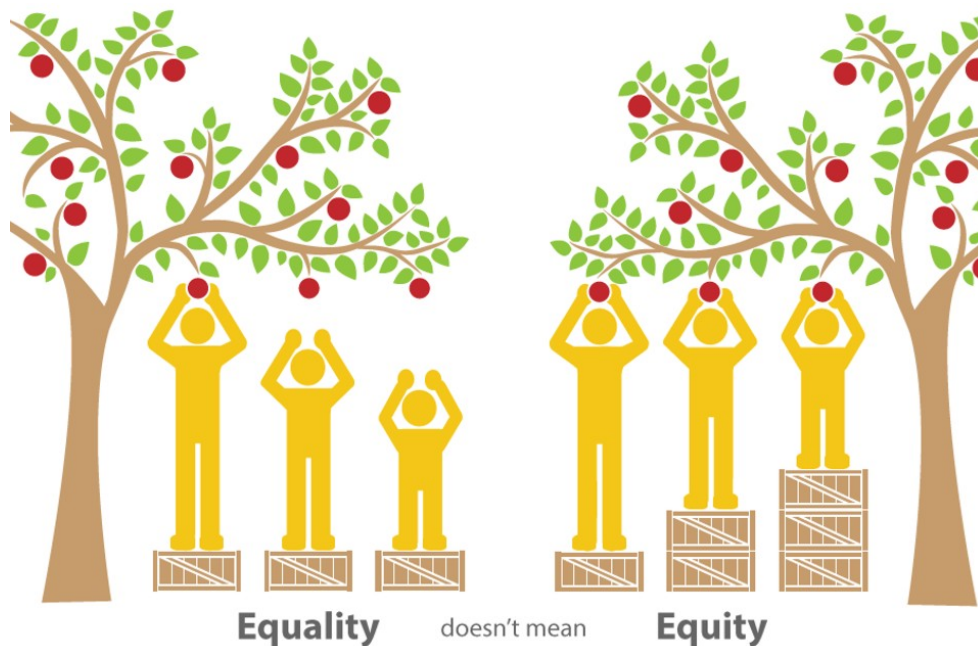
- Promotes a greater **understanding of health** and the health impacts of decisions
- Improves the **evidence** on which stakeholder and policy decisions are made
- Engages and **empowers communities**
- Provides **recommendations** for changes to the design, adoption, or implementation of proposed decisions to include health
- Promotes **healthy and sustainable communities**



Why perform an HIA?

★ What is Equity?

*Equity in health implies that ideally **everyone** should have a **fair opportunity** to **attain** their full **health potential** and, more pragmatically, that **none** should be **disadvantaged** from achieving this potential, if it can be avoided.* – Margaret Whitehead, 1992



Health Impact Assessment: The Process

- Screening
- Scoping
- Assessment
- Recommendations
- Reporting
- Monitoring

A large blue bracket on the right side of the list, grouping the first four items (Screening, Scoping, Assessment, Recommendations) and pointing towards the text "Engagement with Stakeholders and Community Members".

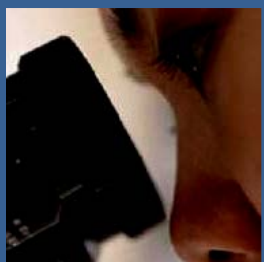
Engagement with
Stakeholders and
Community Members



Steps of HIA



Screening, to determine whether a proposal is likely to have health effects and whether the HIA will provide useful information

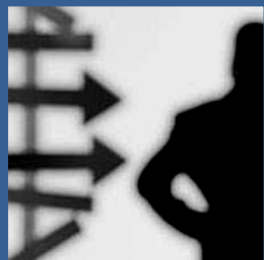


Scoping, to establish the scope of health effects that will be included in the HIA, the populations affected, the sources of data and the methods to be used



Assessment, which is a two step process that first describes the baseline health status and then assesses potential impacts

Steps of HIA



Recommendations suggest design alternatives that could be implemented to improve health or action that could be taken to manage health effects



Reporting presents findings and recommendations to decision makers and stakeholders



Monitoring and evaluation includes monitoring the implementation of HIA recommendations. Evaluation can be of process, impact or outcomes

Overview of the HIA Process

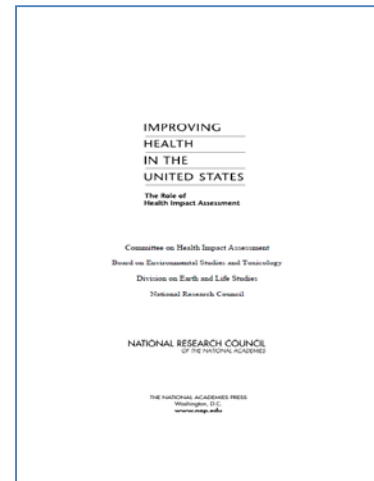
HIA Guidance Documents

A number of guides and handbooks have been developed to inform and direct the HIA practice in the U.S. Two of those are highlighted below



Available at:

<http://advance.captus.com/planning/hia2xx/pdf/Minimum%20Elements%20and%20Practice%20Standards%20for%20HIA%203.0.pdf>



Available at:

http://www.nap.edu/openbook.php?record_id=13229&page=1

HIA EXAMPLE



HIA of the Mojave Desert Solar Energy Projects and Tribal Communities

- Conducted by National Indian Justice Center
- Funded through Health Impact Project
 - Collaboration of the Robert Wood Johnson Foundation and The Pew Charitable Trusts

<http://www.nijc.org/pdfs/HIA%20Project/Final Report-FtIrwinHIA.pdf>



Mojave Desert Solar Energy Projects and Tribal Communities

A Health Impact Assessment Project

Conducted by the National Indian Justice Center



<http://www.nijc.org>

This project is supported by a grant from the Health Impact Project, a collaboration of the Robert Wood Johnson Foundation and The Pew Charitable Trusts.

Purpose of the HIA

- Evaluate the potential health impacts of the proposed Fort Irwin photo-voltaic (PV) array facility which will be located in the Mojave Desert region of California
- Focus on the potential health impacts upon American Indian Tribes with homelands in the region



Screening Overview



- ✓ Project has the potential to impact the health of tribal communities within the region or who have cultural affiliation with the region
- ✓ Identified a number of potential health impacts related to limiting access to and protection of tribal cultural sites, destruction of native plants and displacement of animals near the site
- ✓ HIA would enhance capacity for effective Tribal Consultation
- ✓ NIJC met with decision makers and tribal government representatives to gauge willingness to support the HIA process

Scoping Overview

➤ Key Decision-makers

- DOD – Army at Ft Irwin Army Base
- Public Utility Commission
- CA Department of Energy

➤ Key Stakeholders

- Fort Mojave Indian Reservation
- Chemehuevi Indian Reservation
- Colorado River Indian Reservation
- Other tribal communities with cultural resources in the project area
- Bureau of Indian Affairs
- Local public health agencies
- Community organizations
- Local residents surrounding the proposed sites
- Local businesses

Scoping Overview

2010 American Indian and Alaska Native Health Assessment in California identified three major determinants of health:

1. Sovereignty and Self-Determination
2. Cultural Revitalization
3. Access to Culturally Competent and Affordable Healthcare



Overarching Recommendations

- Engage Mojave Desert Tribes in **meaningful consultation** prior to construction
- Employ **cultural monitors** to evaluate sites for native plants used in tribal cultural practices and to identify landscapes of importance
- Develop a quarterly **meeting schedule with tribal representatives** in anticipation of future projects
- Construction contractor should develop **mitigation strategies for potential infectious diseases** associated with temporary transient workforces
- Consider additional observation in an **alternative season for the desert tortoise**

HIA at EPA

- Evaluating HIA as a decision-support tool for promoting sustainable and healthy communities
 - Gerena School HIA (Springfield, MA)
 - Proctor Creek Boone Boulevard Green Street Project HIA and Expanded HIA (Atlanta, GA)
 - HIA of Proposed Code Changes for Onsite Sewage Disposal Systems (Suffolk County, NY)

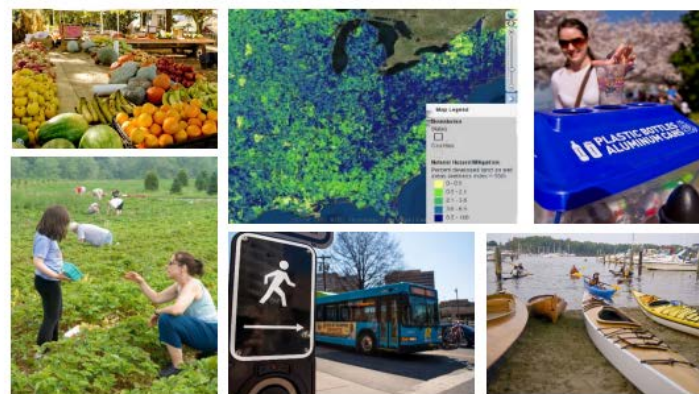


EPA/600/R-15/330
September 2016
www.epa.gov/research

The Health Impact Assessment (HIA) Resource and Tool Compilation: A Comprehensive Toolkit for New and Experienced HIA Practitioners in the U.S.



Stay tuned for the HIA roadmap in EPA's C-FERST!



Office of Research and Development
National Exposure Research Laboratory

https://www.epa.gov/sites/production/files/2017-07/documents/hia_resource_and_tool_compilation.pdf

Thank you!

Presenter contact information: Shannon Griffin
griffin.shannon@epa.gov

For technical information, contact Florence Fulk:
fulk.florence@epa.gov



Disclaimer

The information in this presentation has been reviewed and approved for public dissemination in accordance with U.S. Environmental Protection Agency (EPA). The views expressed in this presentation are those of the author(s) and do not necessarily represent the views or policies of the Agency.

Any mention of trade names or commercial products does not constitute EPA endorsement or recommendation for use.