

# *Health Impact Assessment: Linking Public Health to Community Decisions*

Shannon Griffin

*US EPA Office of Research and  
Development*

July 27, 2017



# INTRODUCTION TO HIA

*“The highest standards of health should be within reach of all, without distinction of race, religion, political belief, economic, or social condition.”*

*-Constitution of the World Health Organization*

## Health in All Policies (HiAP)

Programs, policies, plans, and projects can have intended and unintended health consequences, especially if discussions in the decision-making process are limited to a particular set of issues

**Health in All Policies** is a strategy that:

- Strengthens the link between health and other policies, across sectors and at all levels, to improve the health of all communities and people
- Considers the intentional or unintentional impact of non-health policies on individual or population health



# What is Health?

## Health

“A state of complete physical, mental, and social well-being; not merely the absence of disease and infirmity”

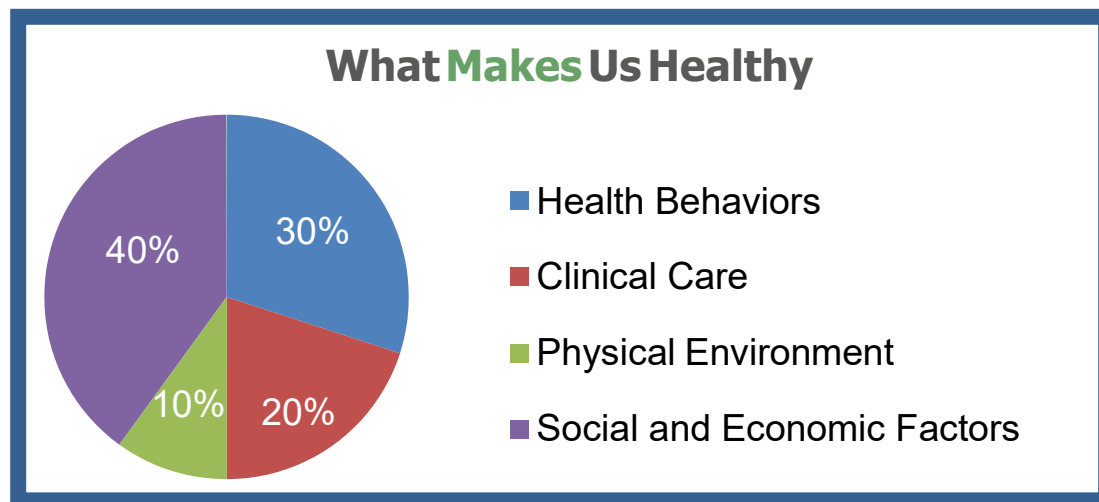
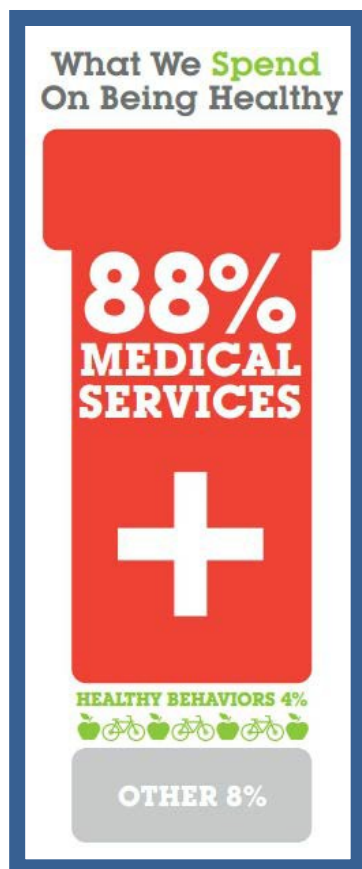
- Preamble to the Constitution of the World Health Organization



Health is an indicator of **quality of life**

## What is Health? Continued

Good health is determined by more than money spent on health care.



- Booske et al. 2010. Different perspectives for assigning weights to determinants of health. *County Health Rankings Working Paper*.

## What is health? Continued

The factors known to directly or indirectly impact human health are referred to as **determinants of health**

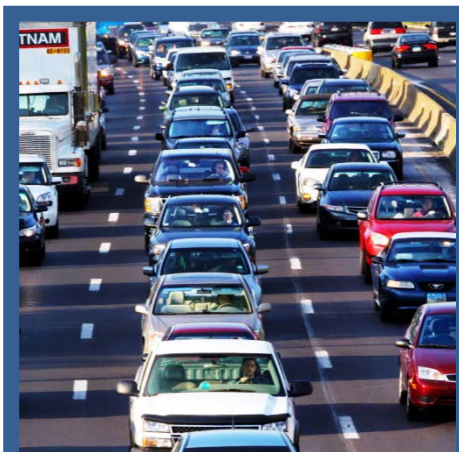
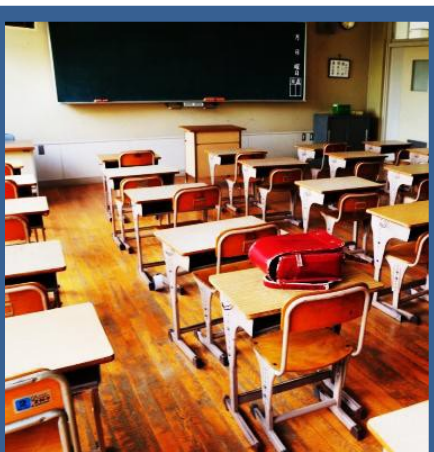


- Human Impact Partners. 2011. *A Health Impact Assessment Toolkit: A Handbook to Conducting HIA*, 3<sup>rd</sup> edition.

## Health in All Policies (HiAP)

**Health impact assessment (HIA)** is one of the key strategies for moving toward a health in all policies perspective

- Offers a comprehensive approach to health
- Applicable in a broad range of decision-making contexts





# What is HIA?

## Health Impact Assessment

“A systematic process that uses an array of data sources and analytic methods and **considers input from stakeholders** to determine the **potential effects** of a proposed policy, plan, program, or project **on the health of a population** and the distribution of those effects within the population. HIA **provides recommendations** on monitoring and managing those effects.”

- National Research Council. 2011. *Improving Health in the United States: The Role of Health Impact Assessment*.



## What is HIA? Continued

In a nutshell, HIAs:

*Evaluate how a  
proposed policy, plan,  
program, or project...*



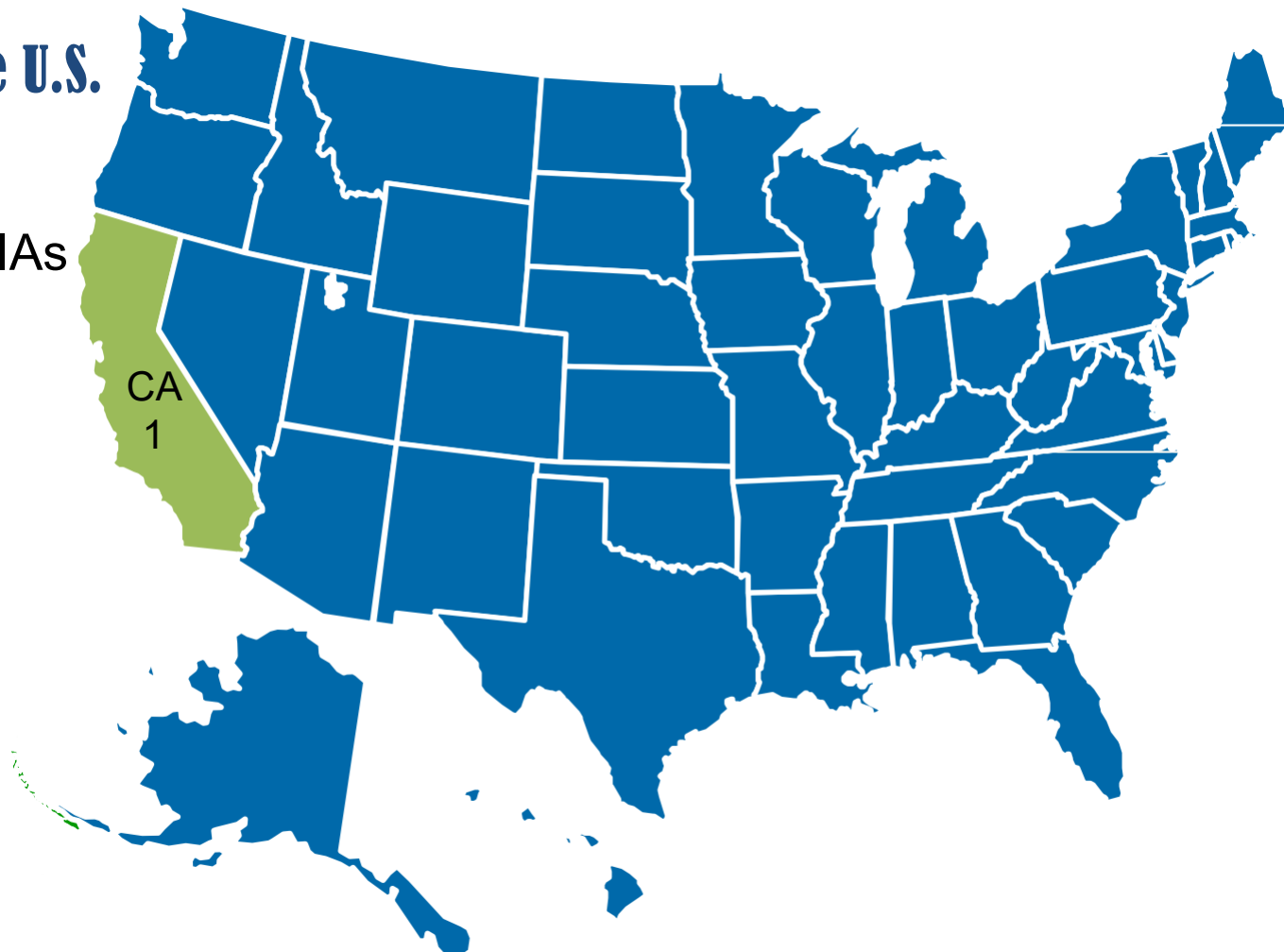
## History of HIA in the U.S.

**First HIA in the U.S.**

**1999**

Completed HIAs

(N=1)

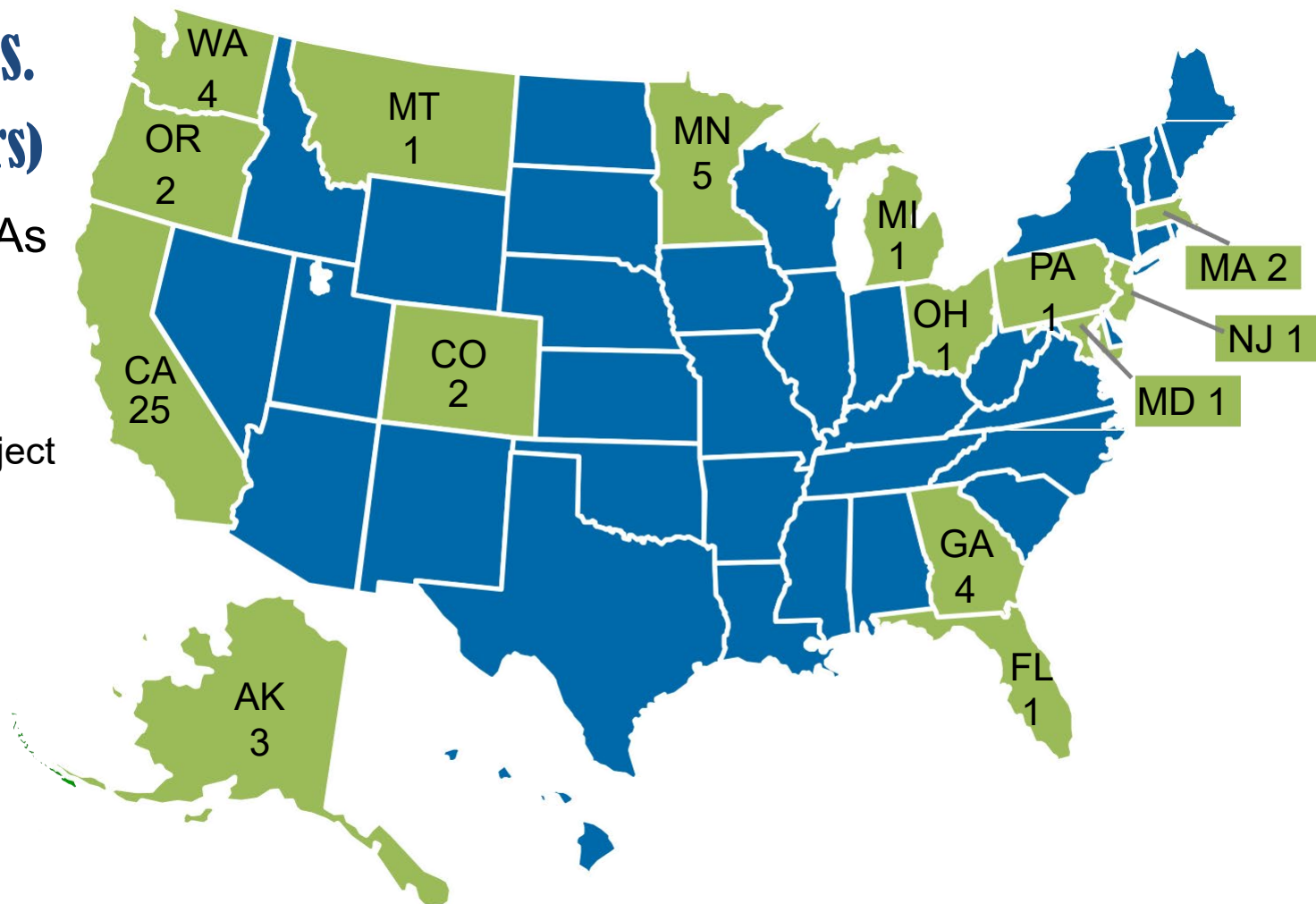


## History of HIA in the U.S. Continued

### HIAs in the U.S. 2009 (10 years)

Completed HIAs  
(N=54)

Health Impact Project  
Founded 2009

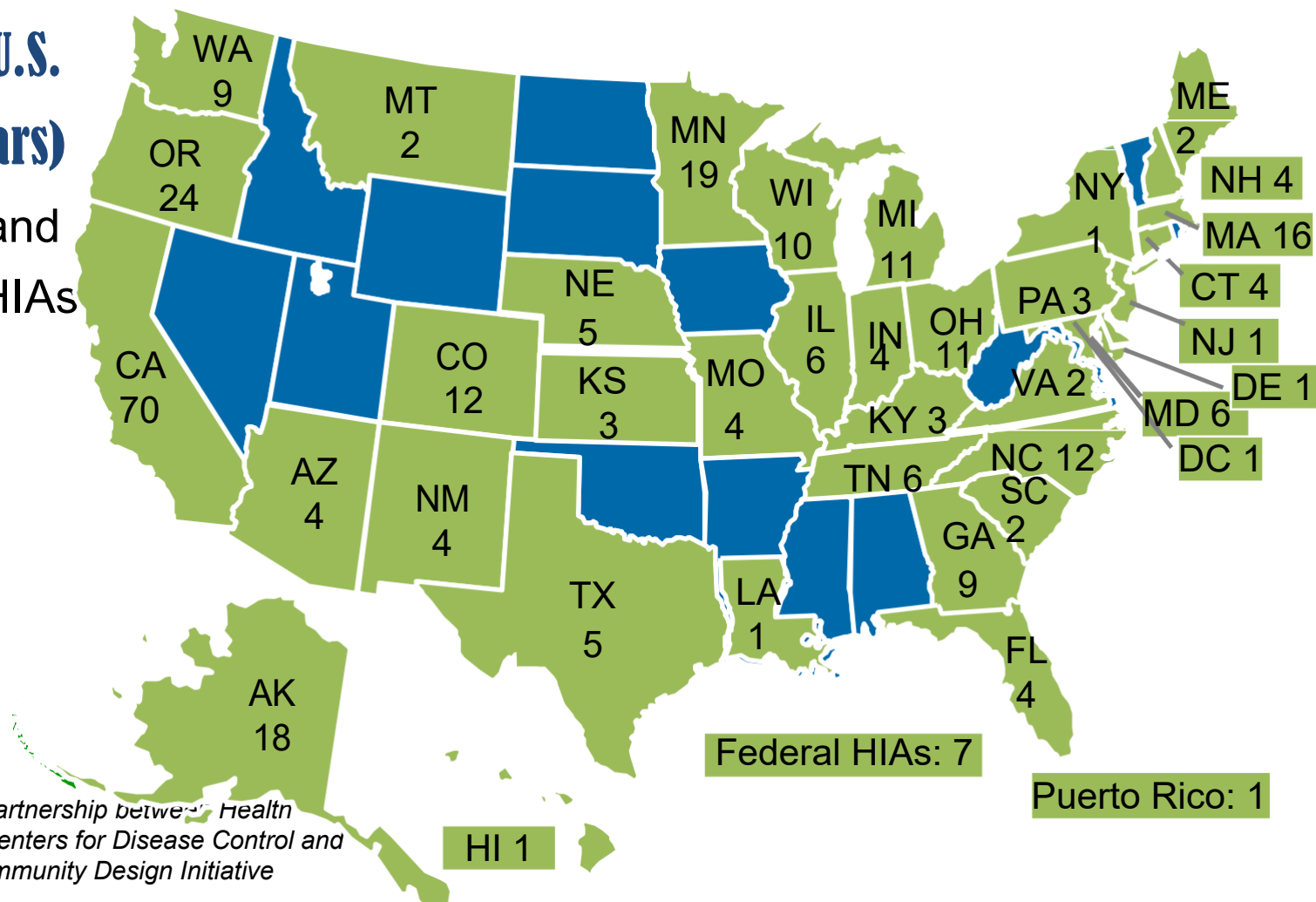


## History of HIA in the U.S. Continued

### HIAs in the U.S.

2014 (15 years)

Completed and  
In Progress HIAs  
(N=308)



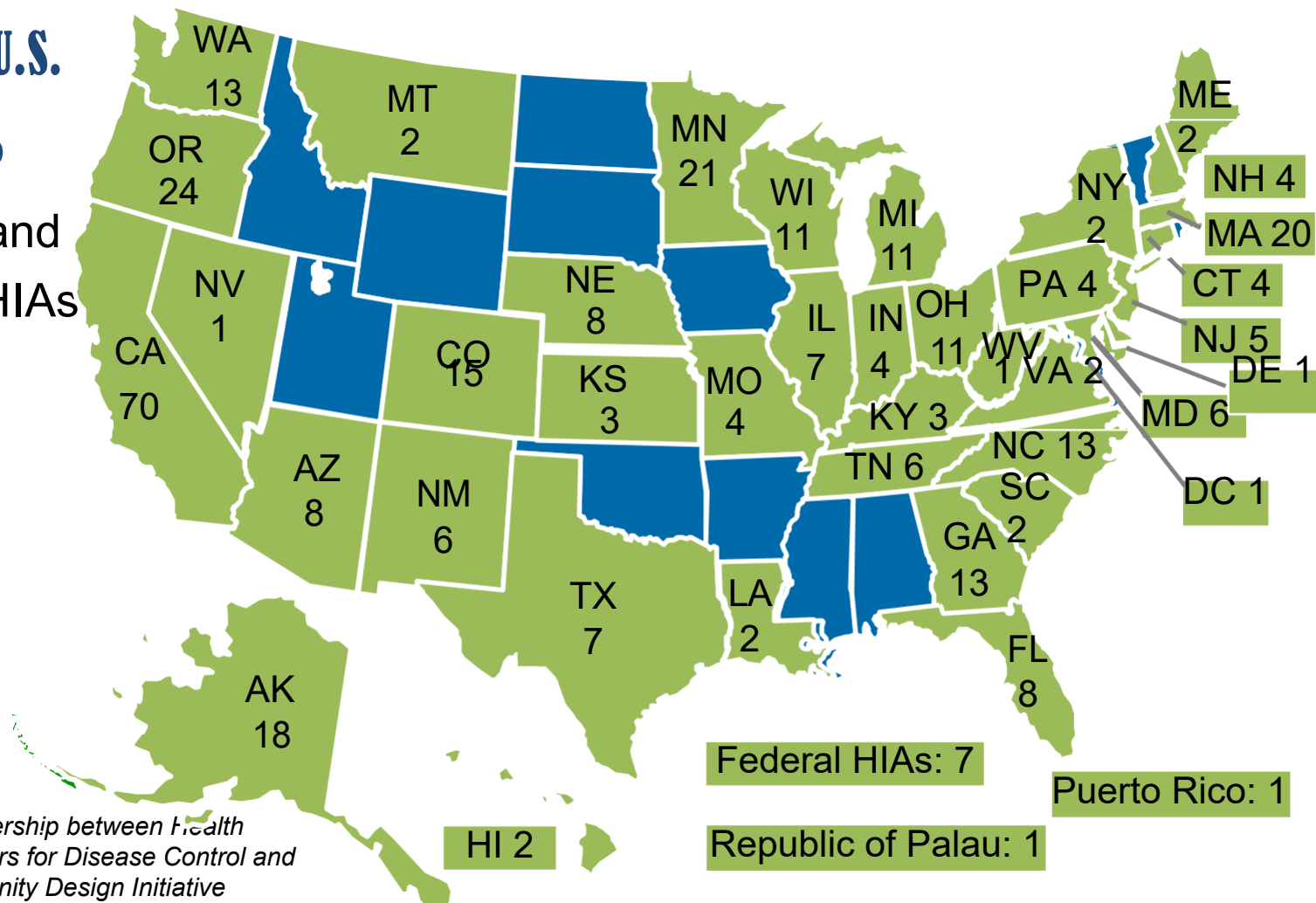
Map created through a partnership between the Health Impact Project and the Centers for Disease Control and Prevention's Healthy Community Design Initiative

## History of HIA in the U.S. Continued

### HIAs in the U.S.

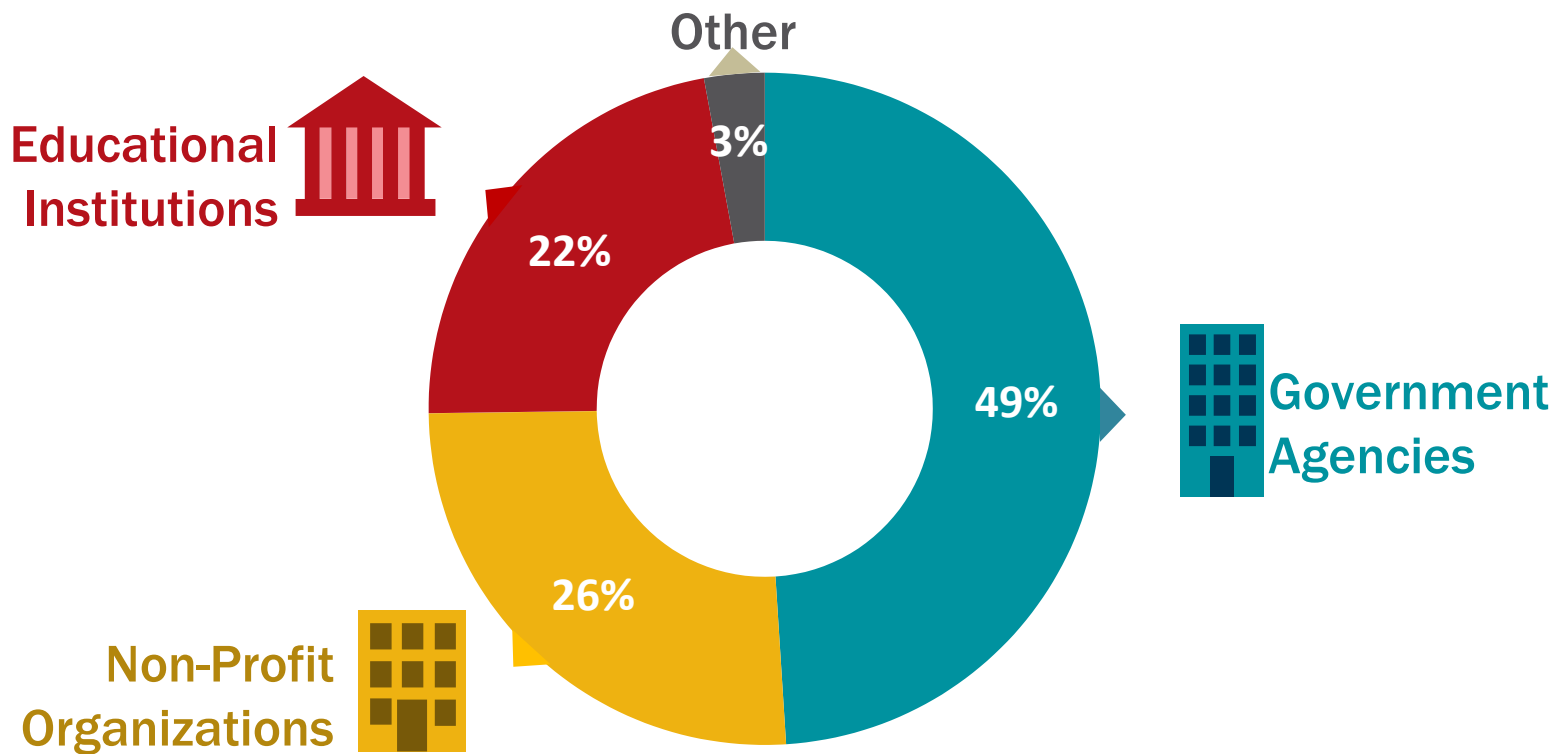
mid-2015

Completed and  
In Progress HIAs  
(N=354+)



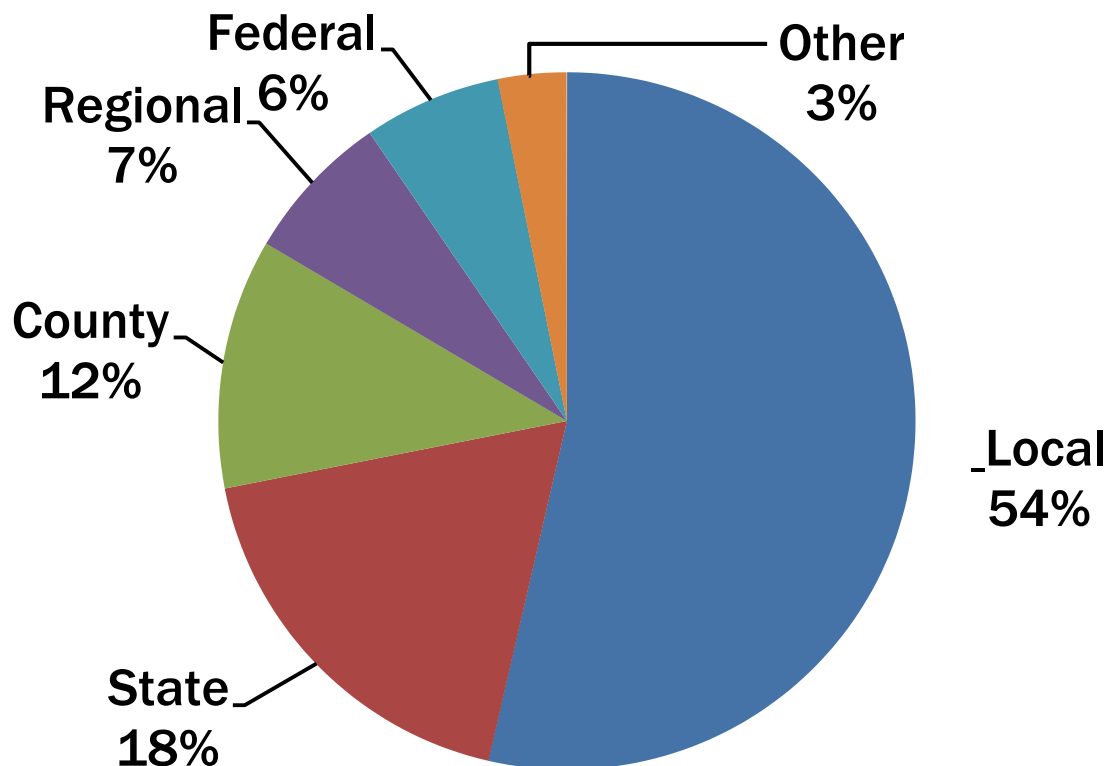
## Context of HIA

### Who is Performing HIAs in the U.S.?



## Context of HIA Continued

### Levels of Decision-Making Informed by HIAs in the U.S.

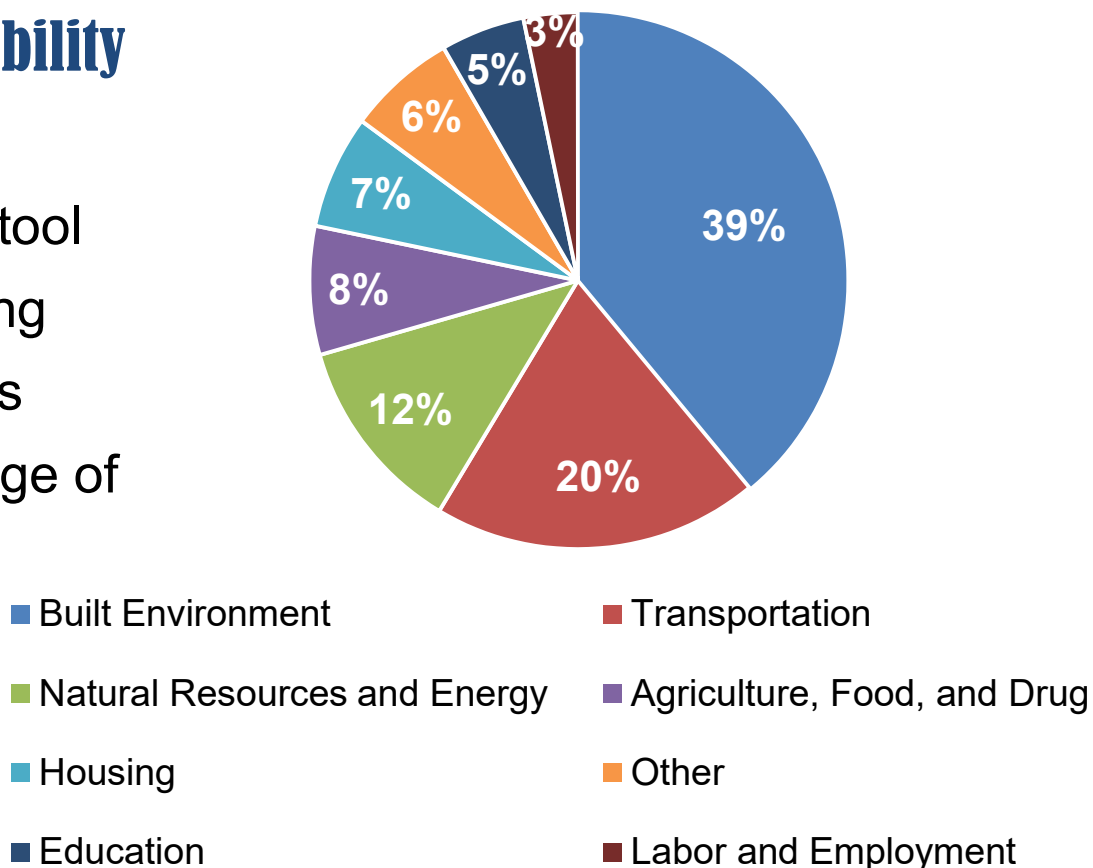




## Context of HIA Continued

### Broad Applicability/Flexibility

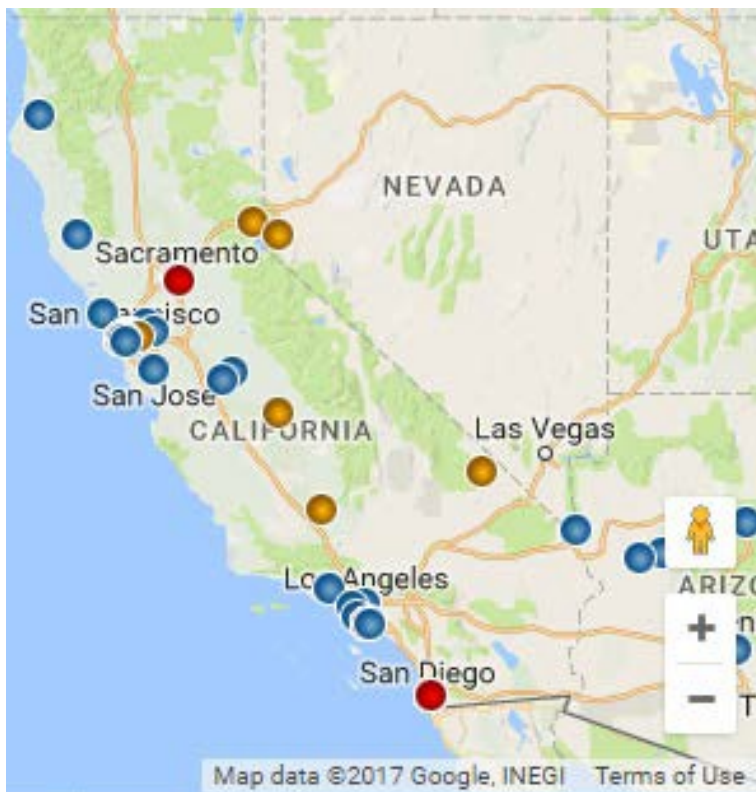
HIA has been promoted throughout the world as a tool for protecting and promoting public health because of its applicability in a broad range of decision-making contexts



Source: Health Impact Project. Data  
Visualization: HIA in the United States;  
accessed 7/17/2015

Other includes: Community Development, Criminal Justice,  
Economic Policy, Gambling, Physical Activity, and Water

## HIA in California (n=82)



### LEGEND

- HIA
- Health Impact Project-Funded HIA
- Multiple HIAs

ct Assessment: X

www.pewtrusts.org/en/multimedia/data-visualizations/2015/hia-map

THE PEW CHARITABLE TRUSTS

SEARCH

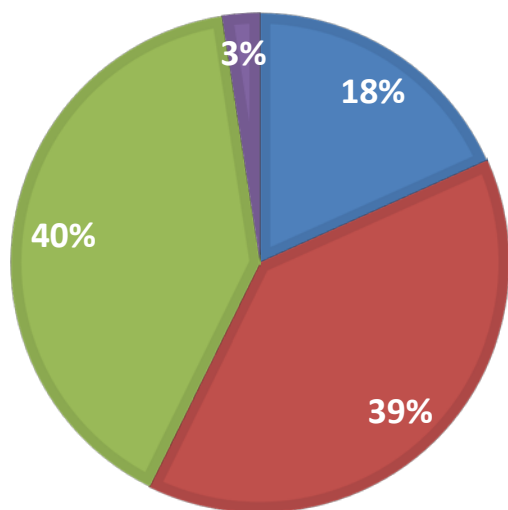
MEN

Project Name	Location	State	Status	Topic	Level	Organization
<b>Hermosa Beach Oil Production Project</b>	Hermosa Beach	California	Complete	Natural Resources and Energy	Local	City of Hermosa Beach (California)
<b>HIA of Policies and Programs to Process Truancy Citations in Los Angeles County</b>	Los Angeles	California	In Progress	Education	Local	Los Angeles County Department of Public Health
<b>HIA of Providing Free or Reduced-Fare Student Bus Passes to Reduce Truancy</b>	Los Angeles	California	Complete	Education	Local	Los Angeles County Department of Public Health
<b>HOPE VI to HOPE SF: San Francisco Public Housing Redevelopment</b>	San Francisco	California	Complete	Housing	Local	University of California Berkeley Health Impact Group, Human Impact Partners
<b>Humboldt County General Plan Update</b>	Humboldt County	California	Complete	Built Environment	County	County of Humboldt Department of Health and Human Services: Public Health Branch, Human Impact Partners, Humboldt Partnership for

# HIA in California Continued

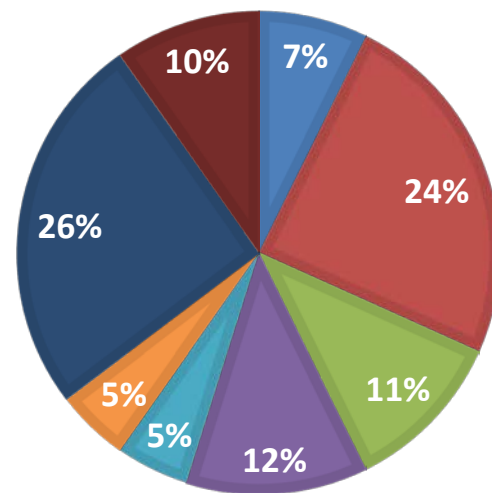
## Organization type:

- Educational Institution
- Government Agency
- Nonprofit
- Other



## Sector type:

- Agriculture, Food and Drug
- Built Environment
- Education
- Housing
- Labor and Employment
- Natural Resources and Energy
- Transportation
- Other



## Why perform an HIA?

### Benefits of HIA

- Promotes a greater **understanding of health** and the health impacts of decisions
- Improves the **evidence** on which stakeholder and policy decisions are made
- Engages and **empowers communities**
- Provides **recommendations** for changes to the design, adoption, or implementation of proposed decisions to include health
- Promotes **healthy and sustainable communities**



## Why perform an HIA? Continued

### ★ What is Equity?

*Equity in health implies that ideally **everyone** should have a **fair opportunity** to **attain** their full **health potential** and, more pragmatically, that **none** should be **disadvantaged** from achieving this potential, if it can be avoided. – Margaret Whitehead, 1992*

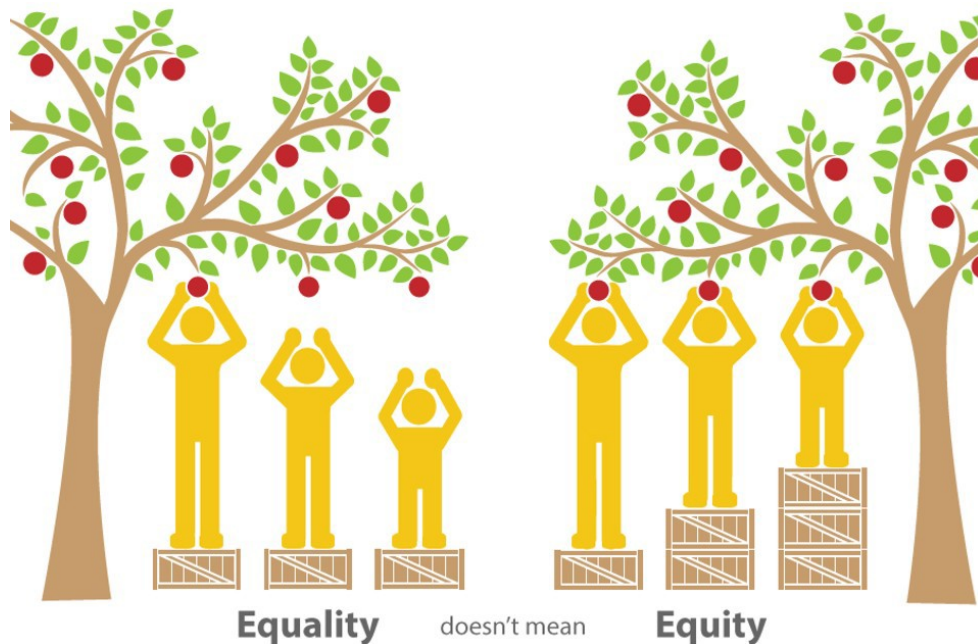


Figure source: Georgia Health Policy Center

# Health Impact Assessment: The Process

- Screening
- Scoping
- Assessment
- Recommendations
- Reporting
- Monitoring

A large, light blue bracket on the left side of the text, grouping the list of steps with the engagement text.

Engagement with  
Stakeholders and  
Community Members

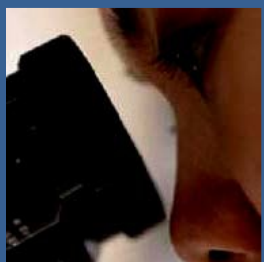




## Steps of HIA



**Screening**, to determine whether a proposal is likely to have health effects and whether the HIA will provide useful information



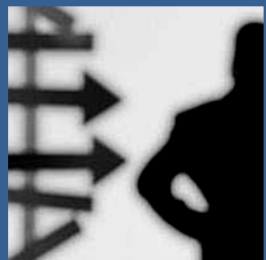
**Scoping**, to establish the scope of health effects that will be included in the HIA, the populations affected, the sources of data and the methods to be used



**Assessment**, which is a two step process that first describes the baseline health status and then assesses potential impacts



## Steps of HIA Continued



**Recommendations** suggest design alternatives that could be implemented to improve health or action that could be taken to manage health effects



**Reporting** presents findings and recommendations to decision makers and stakeholders



**Monitoring and evaluation** includes monitoring the implementation of HIA recommendations. Evaluation can be of process, impact or outcomes

# Overview of the HIA Process

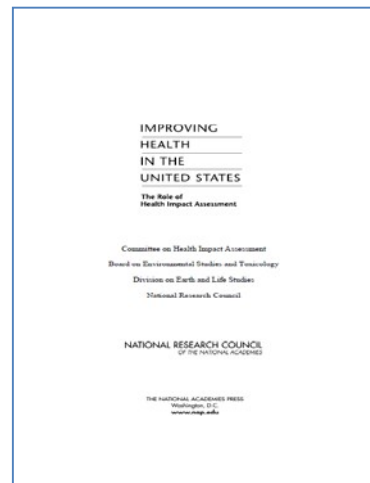
## HIA Guidance Documents

A number of guides and handbooks have been developed to inform and direct the HIA practice in the U.S. Two of those are highlighted below



**Available at:**

[Minimum Elements and Practice Standards for Health Impact Assessment](#)



**Available at:**

[Improving Health in the United States](#)

# **HIA EXAMPLE**



## HIA of the Mojave Desert Solar Energy Projects and Tribal Communities

- Conducted by National Indian Justice Center
- Funded through Health Impact Project
  - Collaboration of the Robert Wood Johnson Foundation and The Pew Charitable Trusts

<http://www.nijc.org/pdfs/HIA%20Project/FinalReport-FtIrwinHIA.pdf>



---

### Mojave Desert Solar Energy Projects and Tribal Communities

---

A Health Impact Assessment Project

---

*Conducted by the National Indian Justice Center*

---



This project is supported by a grant from the Health Impact Project, a collaboration of the Robert Wood Johnson Foundation and The Pew Charitable Trusts.

## Purpose of the HIA

- Evaluate the potential health impacts of the proposed Fort Irwin photo-voltaic (PV) array facility which will be located in the Mojave Desert region of California
- Focus on the potential health impacts upon American Indian Tribes with homelands in the region



## Screening Overview



- ✓ Project has the potential to impact the health of tribal communities within the region or who have cultural affiliation with the region
- ✓ Identified a number of potential health impacts related to limiting access to and protection of tribal cultural sites, destruction of native plants and displacement of animals near the site
- ✓ HIA would enhance capacity for effective Tribal Consultation
- ✓ NIJC met with decision makers and tribal government representatives to gauge willingness to support the HIA process

## Scoping Overview

### ➤ Key Decision-makers

- DOD – Army at Fort Irwin Army Base
- Public Utility Commission
- CA Department of Energy

### ➤ Key Stakeholders

- Fort Mojave Indian Reservation
- Chemehuevi Indian Reservation
- Colorado River Indian Reservation
- Other tribal communities with cultural resources in the project area
- Bureau of Indian Affairs
- Local public health agencies
- Community organizations
- Local residents surrounding the proposed sites
- Local businesses



## Scoping Overview

2010 American Indian and Alaska Native Health Assessment in California identified three major determinants of health:

1. Sovereignty and Self-Determination
2. Cultural Revitalization
3. Access to Culturally Competent and Affordable Healthcare



## Overarching Recommendations

- Engage Mojave Desert Tribes in **meaningful consultation** prior to construction
- Employ **cultural monitors** to evaluate sites for native plants used in tribal cultural practices and to identify landscapes of importance
- Develop a quarterly **meeting schedule with tribal representatives** in anticipation of future projects
- Construction contractor should develop **mitigation strategies for potential infectious diseases** associated with temporary transient workforces
- Consider additional observation in an **alternative season for the desert tortoise**

## HIA at EPA

- Evaluating HIA as a decision-support tool for promoting sustainable and healthy communities
  - Gerena School HIA (Springfield, MA)
  - Proctor Creek Boone Boulevard Green Street Project HIA and Expanded HIA (Atlanta, GA)
  - HIA of Proposed Code Changes for Onsite Sewage Disposal Systems (Suffolk County, NY)

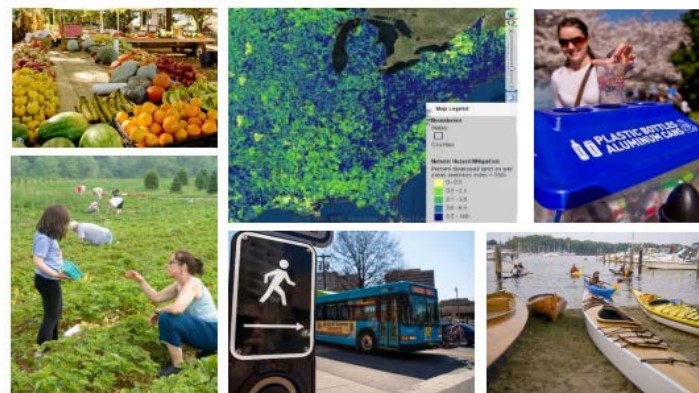


EPA/600/R-15/330  
September 2016  
[www.epa.gov/research](http://www.epa.gov/research)

### The Health Impact Assessment (HIA) Resource and Tool Compilation: A Comprehensive Toolkit for New and Experienced HIA Practitioners in the U.S.



Stay tuned for the HIA roadmap in EPA's C-FERST!



Office of Research and Development  
National Exposure Research Laboratory

[https://www.epa.gov/sites/production/files/2017-07/documents/hia\\_resource\\_and\\_tool\\_compilation.pdf](https://www.epa.gov/sites/production/files/2017-07/documents/hia_resource_and_tool_compilation.pdf)

# Thank you!

Presenter contact information: Shannon Griffin  
[griffin.shannon@epa.gov](mailto:griffin.shannon@epa.gov)

For technical information, contact Florence Fulk:  
[fulk.florence@epa.gov](mailto:fulk.florence@epa.gov)





# Disclaimer

The information in this presentation has been reviewed and approved for public dissemination in accordance with U.S. Environmental Protection Agency (EPA). The views expressed in this presentation are those of the author(s) and do not necessarily represent the views or policies of the Agency.

Any mention of trade names or commercial products does not constitute EPA endorsement or recommendation for use.

