



# Department of Toxic Substances Control (DTSC) Groundwater U (GWU) Workshop Series Santa Susana Field Laboratory (SSFL)

## Workshop #1: What is Groundwater? Geology & Hydrogeology

**DR. MATT BECKER** – PROFESSOR AND CONREY ENDOWED CHAIR OF HYDROGEOLOGY, DEPARTMENT OF EARTH SCIENCE,  
CALIFORNIA STATE UNIVERSITY, LONG BEACH

**JAMIE SLAUGHTER, DM** – PUBLIC PARTICIPATION & COMMUNITY OUTREACH MANAGER, DTSC

**ONLINE ZOOM MEETING:** FEBRUARY 20, 2024, FROM 6:00PM – 8:00PM

If you have difficulty accessing any material presented, please contact us by email, mail, or telephone, and we will work with you to make the information available.

**For email Requests:** [accessibility@dtsc.ca.gov](mailto:accessibility@dtsc.ca.gov)

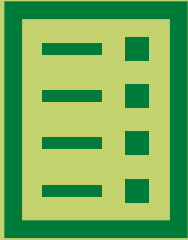
**For written requests:** The Office of Civil Rights, Department of Toxic Substances Control, P.O. Box 806  
Sacramento, CA 95812-0806

**Telephone:** +1 916 324-3095 or +1 800 728-6942 (Toll free)

# DTSC Overview

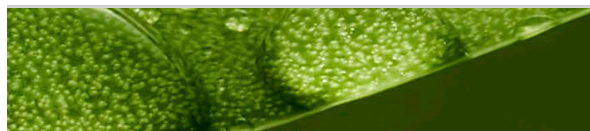


The Department of Toxic Substances Control's (DTSC) mission is to protect California's people, communities, and environment from toxic substances, to enhance economic vitality by restoring contaminated land, and to compel manufacturers to make safer consumer products.



## Workshop Agenda and Purpose

- Workshop Overview
- Presentation by Dr. Matt Becker
  - What is Groundwater?
  - Geology & Hydrogeology
- Q&A
- Upcoming Groundwater U Workshops
- Upcoming Groundwater Decision Documents
- Stay Connected & Next Steps



# Groundwater U Workshops

[https://dtsc.ca.gov/santa\\_susana\\_field\\_lab/](https://dtsc.ca.gov/santa_susana_field_lab/)



Meetings

DATE	ENGAGEMENT	WORKSHOP NAME	WORKSHOP CONTENT
February 20 <sup>th</sup>	Workshop #1	Geology & Hydrogeology	To understand the general principles of groundwater and the hydrologic cycle
March 12 <sup>th</sup>	Workshop #2	Contaminant Fate & Transport	To understand contaminants and the transport process unique to the geology at SSFL
April 4 <sup>th</sup>	Workshop #3	Groundwater Remediation	To understand groundwater remediation goals and methods at SSFL
April 6 <sup>th</sup>	SSFL GW Site Tour	Groundwater Tour	To visit groundwater points of interest at SSFL

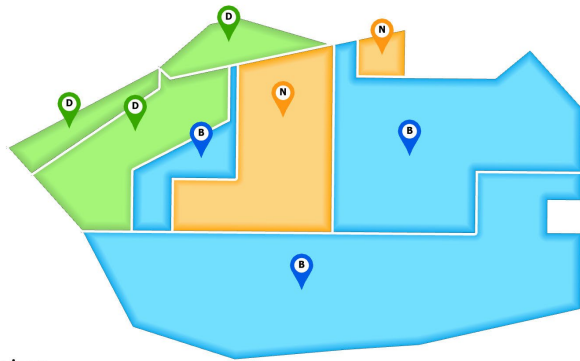
# Workshop Agreements



- Please be courteous to your fellow meeting attendees
- By participating in this meeting, you understand this meeting is recorded and you may be muted (Zoom)
- Speak clearly and at an even pace to ensure that all meeting participants receive the same information
- Use the Q&A section to type questions throughout the presentation (Zoom)



# SSFL Site Location



**Legend**

Administrative Areas

Responsible Party



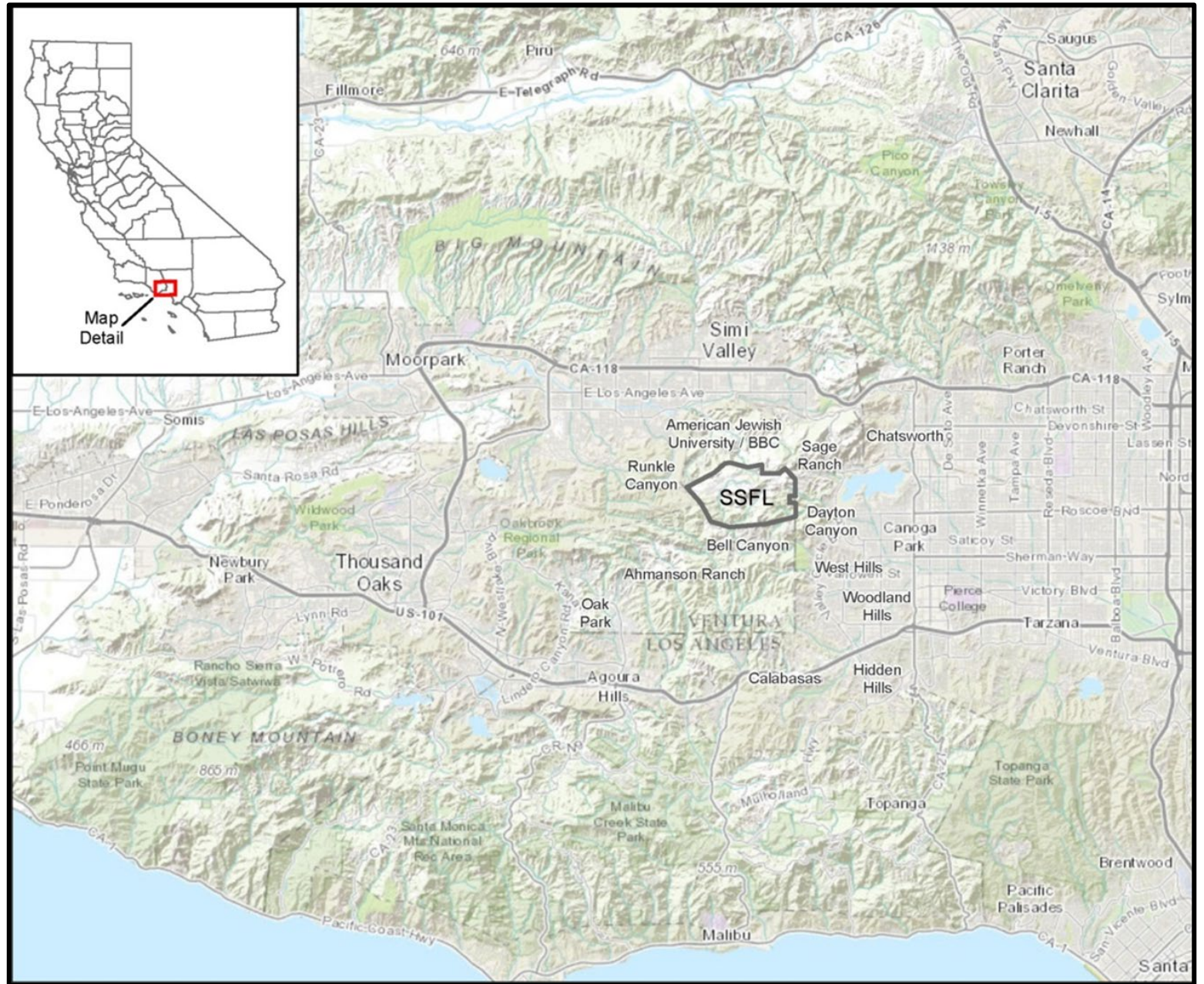
Boeing



DOE



NASA



# Workshop Speaker Introduction



## Dr. Matt Becker

- Professor & Conrey Endowed Chair of Hydrogeology
  - Department of Earth Science
  - California State University, Long Beach

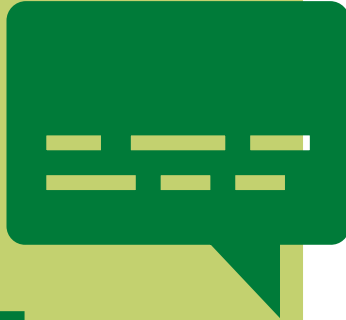
**Presentation:** What is Groundwater? Geology & Hydrogeology

# Listening Session Agreements



- Please be courteous to your fellow meeting attendees
- By participating in this meeting, you understand this meeting is recorded and you may be muted (Zoom)
- Speak clearly and at an even pace to ensure that all meeting participants receive the same information
- Use the Q&A section to type questions throughout the presentation (Zoom)





## Open Forum Instructions for Providing Input

### Computer and Phone Instructions:

- Please click the “raise hand” button or enter your input in the Q&A section
- Phone Callers, press \*6 to mute/unmute and \*9 to raise/lower hand

### When called on from raised hands:

- Please unmute yourself
- State your name and affiliation
- Please ask your question or present your comment
- Specify who your question is directed towards

Please send additional questions to us through the GWU Listening Session Survey link below or on the DTSC SSFL web home page

<https://www.surveymonkey.com/r/GWUListening>

# Groundwater U Workshops

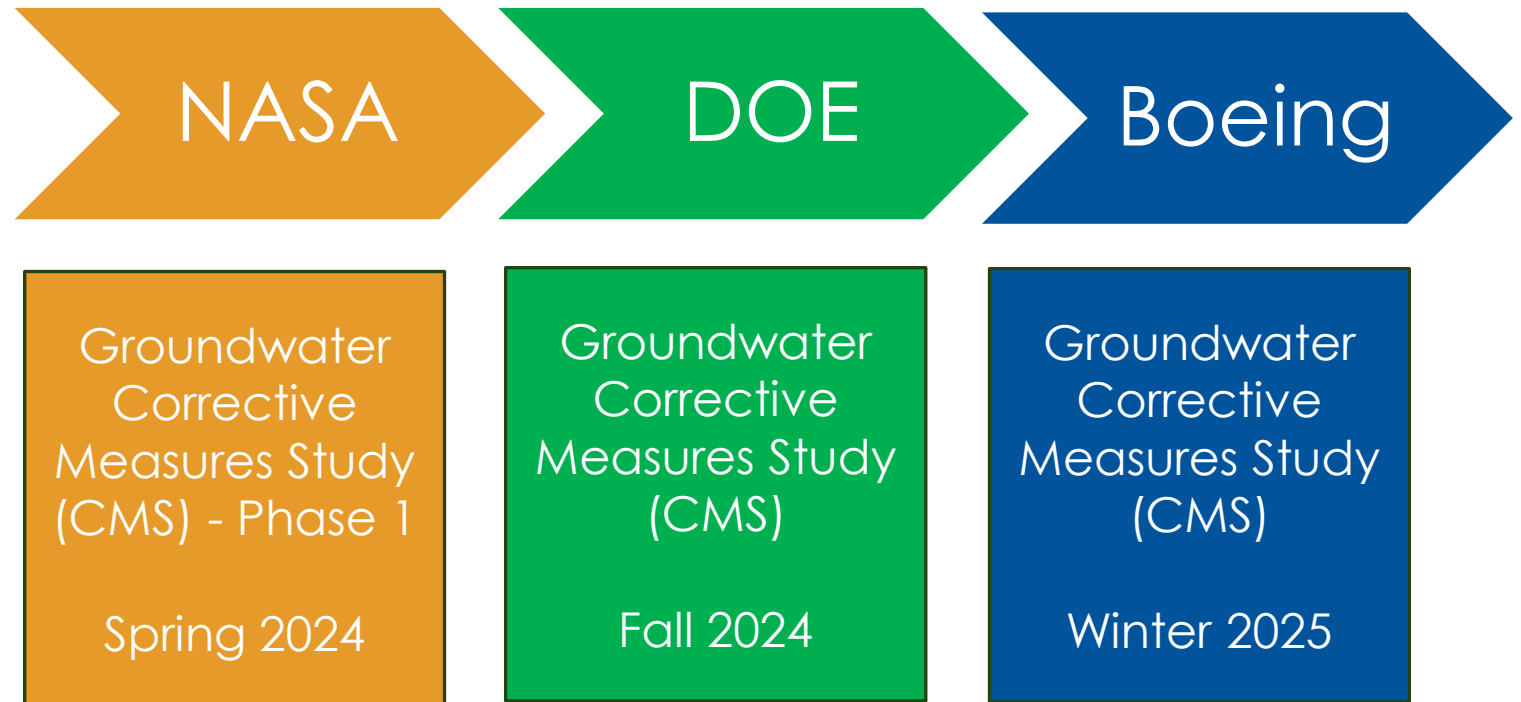
<https://dtsc.ca.gov/events/>

[https://dtsc.ca.gov/santa\\_susana\\_field\\_lab/](https://dtsc.ca.gov/santa_susana_field_lab/)



DATE	ENGAGEMENT	WORKSHOP NAME	WORKSHOP CONTENT
March 12 <sup>th</sup>	Workshop #2	Contaminant Fate & Transport	To understand contaminants and the transport process unique to the geology at SSFL
April 4 <sup>th</sup>	Workshop #3	Groundwater Remediation	To understand groundwater remediation goals and methods at SSFL
April 6 <sup>th</sup>	SSFL GW Site Tour	Groundwater Tour	To visit groundwater points of interest at SSFL

# Anticipated Groundwater Public Comment Periods



# Stay Connected



## SSFL Webpage & Community Survey

[https://dtsc.ca.gov/santa\\_susana\\_field\\_lab/](https://dtsc.ca.gov/santa_susana_field_lab/)



## SSFL E-List

<https://dtsc.ca.gov/dtsc-e-lists/>

<a href="#">What's New</a>	<a href="#">Get Involved</a>	<a href="#">Frequently Asked Questions</a>	<a href="#">Site Activities</a>
<a href="#">Document Library</a>	<a href="#">Regulatory Oversight</a>	<a href="#">Contact Information</a>	<a href="#">Meetings</a>

**SSFL Community Survey**

The California Department of Toxic Substances Control (DTSC) is collecting community input and questions as a way to inform decisions regarding workshops, meetings, and other related community communication and participation activities, giving voice to all participants.

Please provide your input and/or questions in the survey form below.

[Take the Survey](#)

# Additional Resources

**DEPARTMENT OF TOXIC SUBSTANCES CONTROL**  
**ENVIROSTOR**

Tools Reports Community Involvement How to Use EnviroStor ESI DTSC Web

**SANTA SUSANA FIELD LABORATORY -BOEING-CORRECTIVE ACTION (80001713)** SIGN UP FOR EMAIL ALERTS

SIMI VALLEY, CA 960630000  
VENTURA COUNTY  
SITE TYPE: CORRECTIVE ACTION

PROJECT MANAGER: PATRICK MOVLAY  
SUPERVISOR: MINDY MATHIAS  
OFFICE: NORTHERN CALIFORNIA SCHOOLS & SANTA SUSANA

PUBLIC PARTICIPATION SPECIALIST: JAMIE SLAUGHTER  
PRESS CONTACT: ELIZABETH LESLIE-GASSAWAY  
CENSUS TRACT: 6111007511  
CALENVIROSCREEN PERCENTILE SCORE: 30-35%

Summary Land Use Restrictions Activities Community Involvement Site/Facility Docs Sub-Areas Map Related Sites CalEnviroScreen Permitting Enforcement / Inspections

**Site Information**

CLEANUP STATUS  
ACTIVE AS OF 1/1/2008

SITE TYPE: CORRECTIVE ACTION	ENVIROSTOR ID: 80001713
NATIONAL PRIORITIES LIST: NO	SITE CODE: 300232, 530033
ACRES: 2950 ACRES	SPECIAL PROGRAM:
APN: NONE SPECIFIED	FUNDING: RESPONSIBLE PARTY
CLEANUP OVERSIGHT AGENCIES:	ASSEMBLY DISTRICT: 42
DTSC - SITE CLEANUP PROGRAM	SENATE DISTRICT: 27

## SSFL Webpage

[https://dtsc.ca.gov/santa\\_susana\\_field\\_lab/](https://dtsc.ca.gov/santa_susana_field_lab/)

## SSFL Public Participation

[https://dtsc.ca.gov/santa\\_susana\\_field\\_lab/ssfl\\_public\\_involvement/](https://dtsc.ca.gov/santa_susana_field_lab/ssfl_public_involvement/)

## SSFL Links

- [SSFL Home](#)
- [About SSFL](#)
- [Boeing Cleanup Settlement Agreement](#)
- [What's New](#)
- [Document Library](#)
- [Public Involvement](#)
- [Site Activities](#)
- [Regulatory Oversight](#)
- [SSFL Final PEIR](#)
- [Additional Resources](#)
- [SSFL Archive](#)
- [Contact Information](#)
- [Subscribe to SSFL E-List](#)
- [Frequently Asked Questions \(FAQs\)](#)

# SSFL GWU Workshop Series Feedback

Workshop Feedback

<https://www.surveymonkey.com/r/GWUPostSurvey>





## DTSC Project Contacts for SSFL

### How To Stay Connected

- **Public Participation Survey Form:** [https://dtsc.ca.gov/santa\\_susana\\_field\\_lab/](https://dtsc.ca.gov/santa_susana_field_lab/)
- **Email:** [DTSC\\_SSFL@DTSC.CA.Gov](mailto:DTSC_SSFL@DTSC.CA.Gov)
- **Mail:** DTSC / Public Participation, 9211 Oakdale Ave., Chatsworth, CA 91311

### Project Contacts and Information

- **Boeing:** Patrick Movlay, Senior Environmental Scientist / Project Manager, [Patrick.Movlay@dtsc.ca.gov](mailto:Patrick.Movlay@dtsc.ca.gov)
- **NASA:** Paul Carpenter, Senior Engineering Geologist / Project Manager, [Paul.Carpenter@dtsc.ca.gov](mailto:Paul.Carpenter@dtsc.ca.gov)
- **DOE:** Tanya Brosnan, Senior Engineering Geologist / Project Manager, [Tanya.Brosnan@dtsc.ca.gov](mailto:Tanya.Brosnan@dtsc.ca.gov)
- **Public Participation Inquiries:** Jamie Slaughter, Public Participation & Community Outreach Manager, [Jamie.Slaughter@dtsc.ca.gov](mailto:Jamie.Slaughter@dtsc.ca.gov)
- **Media Inquiries:** Elizabeth Leslie-Gassaway, Information Officer Specialist / [Elizabeth.Leslie-Gassaway@dtsc.ca.gov](mailto:Elizabeth.Leslie-Gassaway@dtsc.ca.gov)

# Thank You