



# SoCal Urban Lead Symposium: Inform, Involve, Innovate

## Session #2 – Health and Risk

May 29, 2024

Janet M. Scully, MPH  
Program Manager

Office of Environmental Justice and Climate Health  
Los Angeles County Department of Public Health





# The Office of Environmental Justice and Climate Health within the Department of Public Health



# Key Functions - Office of EJ and Climate Health



**Community  
Engagement**



**Interagency  
Coordination**



**Policy**



**Data**

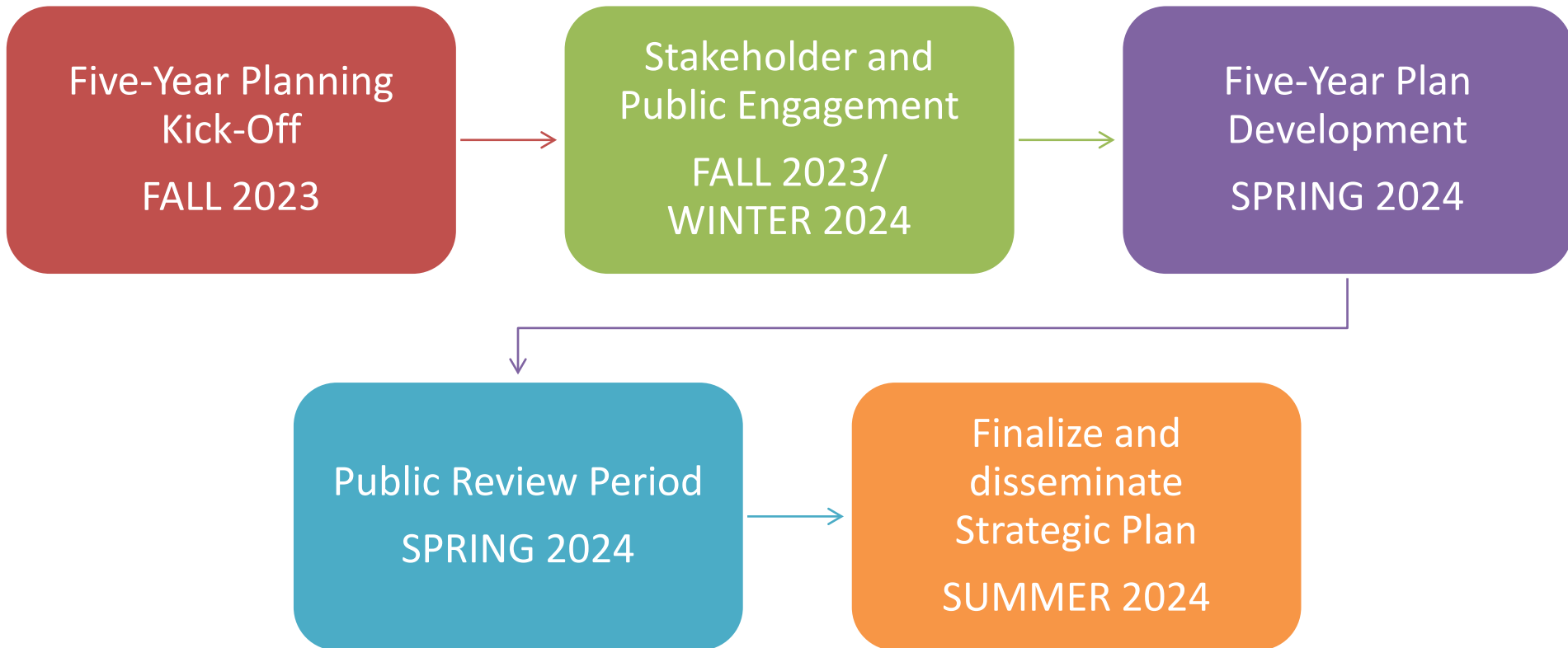


**Workforce &  
Workplace**



**Communications**

# Developing the Five-Year Plan



\*Dates subject to change



# Strengthening Safeguards to Protect Workers, Families and Children

October 2021 - CDC changed its blood lead reference value (BLRV) from 5 mcg/dl to 3.5 mcg/dl. California adopted the new BLBV.

January 2024 - EPA lowered the screening level for lead in soil at residential properties from 400 parts per million (ppm) to 200 ppm.

February 2024 - Senate Bill 1193 was introduced to phase out the sale of leaded aviation fuel starting January 1, 2026.

February 2024 – CalOSHA lowered the permissible exposure limit (PEL) for lead from 50 micrograms per cubic meter of air to  $10 \mu\text{g}/\text{m}^3$ , and the action level (AL) from  $30 \mu\text{g}/\text{m}^3$  to 2.

# Sources of lead Exposure



Older homes  
and buildings



Soil, yards and  
playgrounds



Jobs and  
hobbies



Drinking water



Dust



Products



Folk remedies



# Ways to Reduce Lead Contact

Teach children to wash their hands frequently

Cover bare soil in the yard to avoid contact with contaminated soil

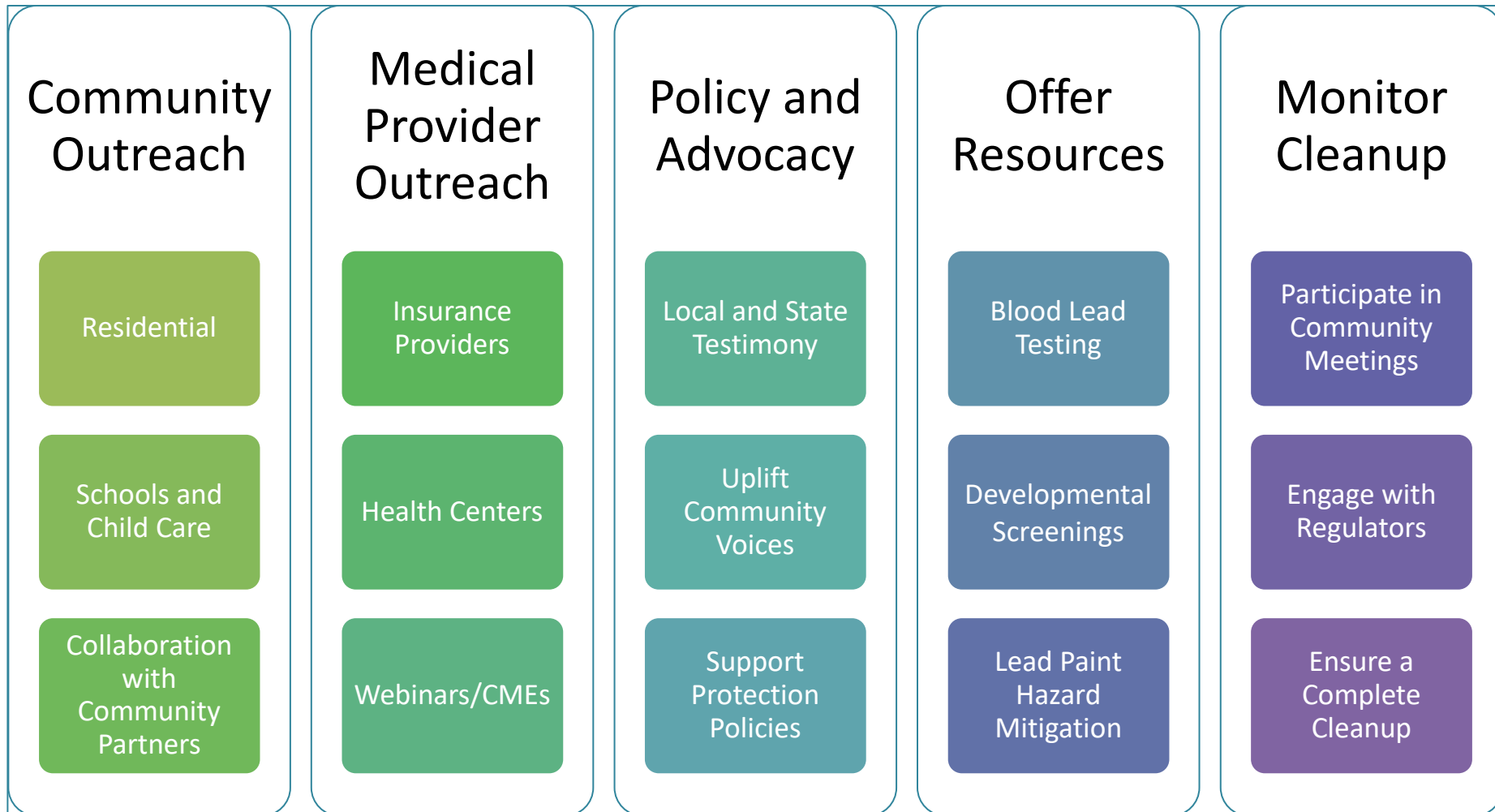
Put doormats outside and inside all entryways and remove shoes before entering to avoid tracking contaminated soil into the house

Keep home dust-free by using a wet mop or vacuum with HEPA filter

Wet-wipe down windowsills, countertops and door jambs weekly

Eat a Diet High in Iron, Calcium & Vitamin C

# DPH Efforts to Address Lead Health Impacts in Communities







# Childhood Lead Poisoning Prevention Program (CLPPP)

1. Promote blood lead screening
2. Carry out primary prevention, targeted outreach and education, and surveillance activities.
3. Provide nursing and environmental case management and follow-up for lead-burdened children.

CHILDHOOD LEAD POISONING  
PREVENTION PROGRAM



LEAD IS A POISON,  
TEST YOUR CHILDREN  
**1-800-LA-4-LEAD**

<http://publichealth.lacounty.gov/lead/>



# THANK YOU!

**Janet Scully**  
**(323)509-6332**  
**[jscully@ph.lacounty.gov](mailto:jscully@ph.lacounty.gov)**

